

SE1/4, NE1/4, SEC. 24, TWP. 24 N., RGE. 4 E., W.M.



SCALE: 1" = 20'

MERIDIAN

STATE PLANE COORDINATE SYSTEM - NORTH ZONE NAD83 (2011)
BASED ON RAPID STATIC GPS MEASUREMENTS WITH OPUS SOLUTION.

VERTICAL DATUM

NAVD 88 (GEOID 18)
BASED ON RAPID STATIC GPS MEASUREMENTS WITH OPUS SOLUTION.

BENCHMARKS

- TBM-A
FOUND 4"x4" CONC MON WITH 2" BRASS DISC 1" LS#25341 WITH PUNCH 0.3 BELOW GRADE IN CASE GRADE IN CASE 69.6' NW OF NW PROP CORNER.
ELEV. = 104.53'
- TBM-B
FOUND 1/2" REBAR AND MGA CONTROL CAP AT W SIDE FOREST DRIVE, 0.5W OF WEST EDGE ASPHALT PAVEMENT AND 15.5W OF CB-5078.
ELEV. = 113.94'

NOTES

- A 5" ELECTRONIC TOTAL STATION WAS USED FOR THIS FIELD TRAVERSE SURVEY. ALL EQUIPMENT HAS BEEN MAINTAINED IN ACCORDANCE WITH THE MANUFACTURER'S GUIDELINES. ACCURACY MEETS OR EXCEEDS W.A.C. 332-130-090.
- THIS SURVEY WAS PERFORMED WITHOUT THE BENEFIT OF A TITLE REPORT.
- THE INFORMATION DEPICTED ON THIS MAP REPRESENTS THE RESULTS OF A SURVEY MADE ON THE DATE INDICATED AND CAN ONLY BE CONSIDERED AS INDICATING THE GENERAL CONDITION EXISTING AT THAT TIME. ALL CONTROL INDICATED AS "FOUND" WAS RECOVERED FOR THIS PROJECT IN FEBRUARY 18, 2020, UNLESS OTHERWISE NOTED.
- UNDERGROUND UTILITIES WERE LOCATED BASED ON SURFACE EVIDENCE (I.E. PAINT MARKS, SAW CUTS IN PAVEMENT, COVERS, ETC.). THE CONTRACTOR SHALL VERIFY THE EXACT LOCATION, ELEVATION, AND SIZE OF EXISTING UTILITIES PRIOR TO CONSTRUCTION.
- TREE SIZES AND SPECIES WERE DETERMINED TO THE BEST OF OUR ABILITY. MEAD GILMAN AND ASSOCIATES DOES NOT WARRANT THE ACCURACY OF THE SIZE AND SPECIES OF ANY TREES SHOWN HEREON. ALL TREE SIZES SHOULD BE VERIFIED BY A TRAINED ARBORIST.
- THIS MAP DOES NOT INTEND TO SHOW ALL EASEMENTS OR RECORDS.
- ALL CONTOUR INFORMATION EAST OF THE NATIVE GROWTH PROTECTION AREA BOUNDARY WAS GENERATED FROM PUBLIC LIDAR DATA.
- FLAGS AT OHW ARE SET BY ALTMANN OLIVER ASSOCIATES, LLC IN JANUARY OF 2023.
- THIS UPDATE TO THE TOPOGRAPHIC SURVEY IS INTENDED TO JUST SHOW THE NEW BUFFER AND ORDINARY HIGH WATER FLAGS. NO ATTEMPT TO UPDATE ANY OTHER ASPECT OF THE MAP HAS BEEN DONE.

LEGAL DESCRIPTION

LOTS 1-4, KNUTSON SHORT PLAT, MERCER ISLAND SHORT PLAT NO SUB07-003 AS RECORDED UNDER REC. NO. 20071210900010.

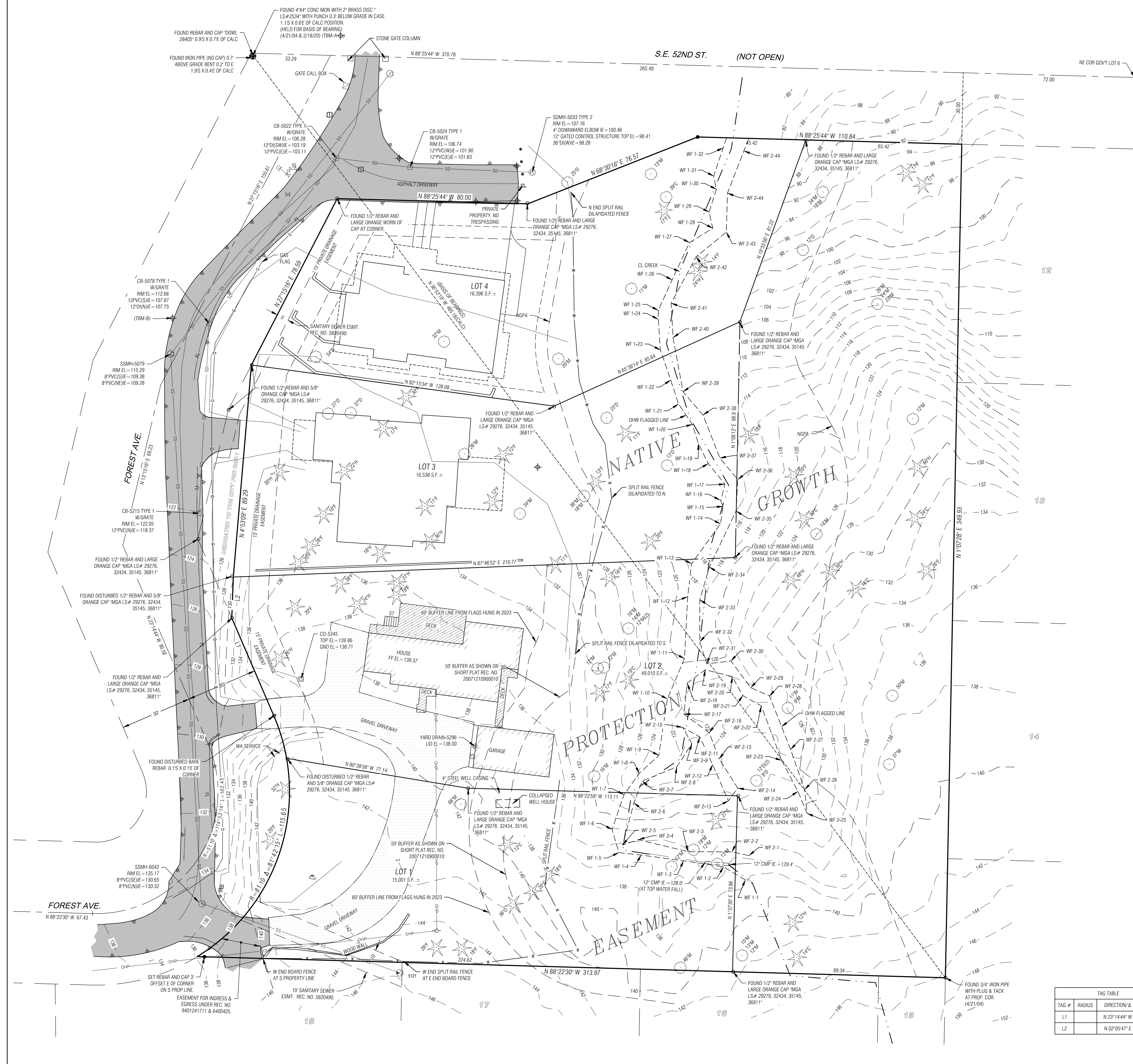
REFERENCES

- ROS REC. NO. 20071210001864, VOL. 236, PG. 232.
- MERCER ISLAND SHORT PLAT NO SUB07-003, REC. NO. 2007121090001.

LEGEND

- SET 1/2" X 24" REBAR WITH YELLOW PLASTIC CAP STAMPED "MGA 35145 48383"
- FOUND CORNER
- ⊕ FOUND MONUMENT
- ⊕ TEMPORARY BENCHMARK
- ⊕ GAS VALVE
- ⊕ ELECTRICAL JUNCTION BOX
- UTILITY POLE
- CATCH BASIN - TYPE I
- CATCH BASIN - TYPE II
- STORM CLEANOUT
- YARD DRAIN
- SEWER MANHOLE
- FIRE HYDRANT
- HOSE BIB
- WATER METER
- WATER VALVE
- BOLLARD
- SIGN
- SOIL TEST PIT
- CONIFEROUS TREE
- DECIDUOUS TREE
- ASPHALT FENCE LINE
- OVERHEAD POWER LINES
- SANITARY SEWER LINE
- STORM DRAIN LINE
- GAS LINE
- WATER MAIN
- ASPHALT HATCH
- CONCRETE HATCH
- DECK HATCH
- GRAVEL HATCH
- C CEDAR
- D DECIDUOUS
- E ELM
- H HEMLOCK
- M MAPLE
- CS CONC. SLAB
- FF FINISH FLOOR
- FL FLOW LINE/ASPH THICKENED EDGE
- ST STAIRS
- WF# WETLAND FLAG NUMBER
- OHV FLAGGED OVERHEAD WATER LINE

TAG TABLE			
TAG #	RADIUS	DIRECTION/Δ	LENGTH
L1		N 23°14'44" W	44.63
L2		N 02°05'47" E	17.18



DATE	
REVISION	
#	

1/12/23

MEAD GILMAN
LAND SURVEYORS

P.O. BOX 989, WOODVILLE, WA 98072 | PHONE: (425) 486-1232 | WWW.MEADGILMAN.COM

FOREST AVE LOTS
BOUNDARY & TOPOGRAPHIC SURVEY

SEASCAPE HOMES
PO BOX 40568
BELLEVUE WA 98015

DRAWN BY: **LSD**

REVIEWED BY: **CSB**

DATE: **03-11-2020**

JOB NO: **20011**

SHEET: **1 OF 1**