

NOTES

1. ALL WORK SHALL BE DONE IN ACCORDANCE WITH TOWN OF MERCER ISLAND CURRENT STANDARD SPECIFICATIONS.
2. GRATES ON CATCH BASINS SHALL BE PER ARCHITECT OR LANDSCAPE ARCHITECT. CONTRACTOR TO SUBMIT GRATES FOR REVIEW PRIOR TO PURCHASE.
3. ALL SD PIPE SHALL BE SDR 35 PVC PIPE.
4. AREA DRAINS SHALL BE BLACK NDS PART #1200 WITH GRATE OPENING PER NDS.
5. PAVEMENT RESTORATION LIMITS SHALL MATCH SAME FULL DEPTH PAVEMENT LIMITS AS EX. ASPHALT. INSPECTOR TO DETERMINE IF GRIND AND OVERLAY REQUIRED.

IMPERVIOUS SURFACE AREAS				
SURFACE	DESCRIPTION	BMP	AREA (SF)	AREA (AC)
S1	SFR (Roof)		2,567	0.059
S2	Concrete DWY		1,088	0.025
S3	Walkways		210	0.005
IMPERVIOUS TOTAL			3,865	0.089

PERVIOUS SURFACE AREAS				
SURFACE	DESCRIPTION	BMP	AREA (SF)	AREA (AC)
A			3,117	0.072
B				
PERVIOUS TOTAL			3,117	0.072

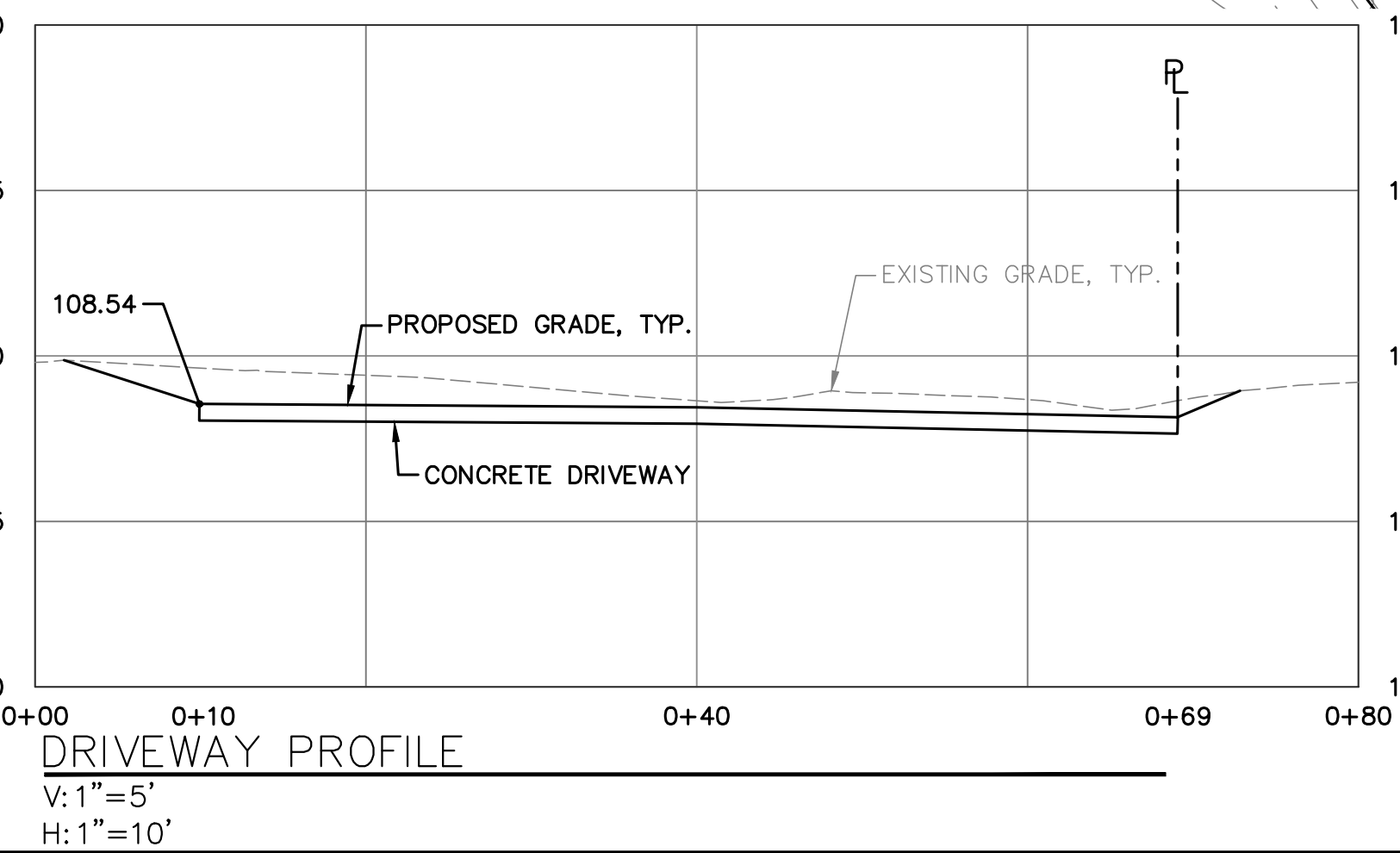
UNDISTURBED AREA				
SURFACE	DESCRIPTION	BMP	AREA (SF)	AREA (AC)
U1	Concrete DWY		634	0.01455
U2	Stairs		83	0.00191
U3	Retaining Walls		50	0.00115
U4	Deck		78	0.00179
U5	Rockery		142	0.00326
U6	Concrete Pad		26	0.0006
U7	Forest		10,886	0.24991
UNDISTURBED TOTAL			11,899	0.273

TOTALS				
			TOTAL LOT	
			18,881	0.433

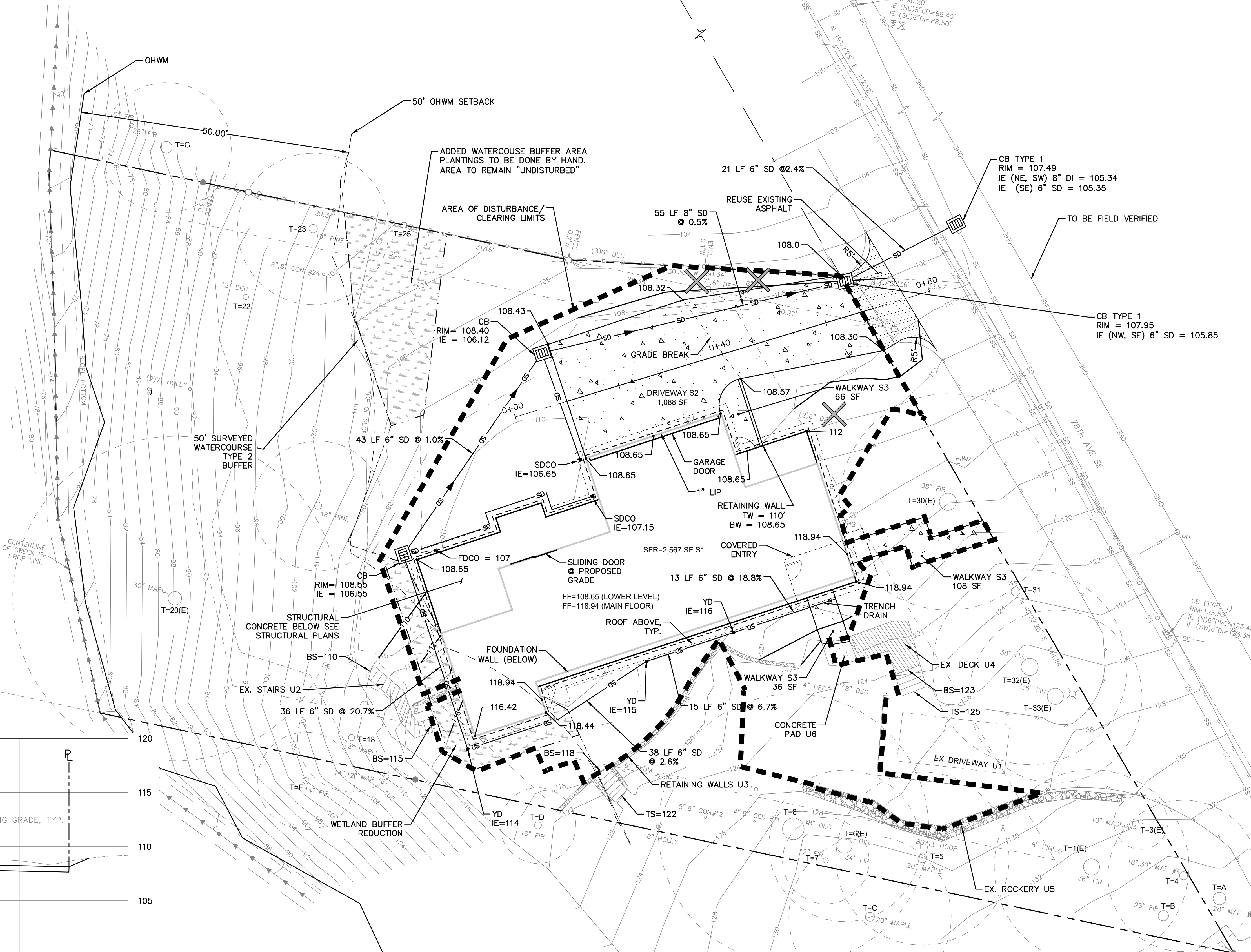
QUANTITIES (FOR PERMITTING ONLY)	CY
CUT	145 CY
FILL	98 CY
NET CUT/FILL	47 CY

*DOES NOT INCLUDE BUILDING FOOTPRINT

- EXISTING ASPHALT PAVEMENT
- CLASS 4000 CONC W/ REINFORCEMENT



EXCEPTIONAL TREE LIST:
1,3,6,20,30,32,33

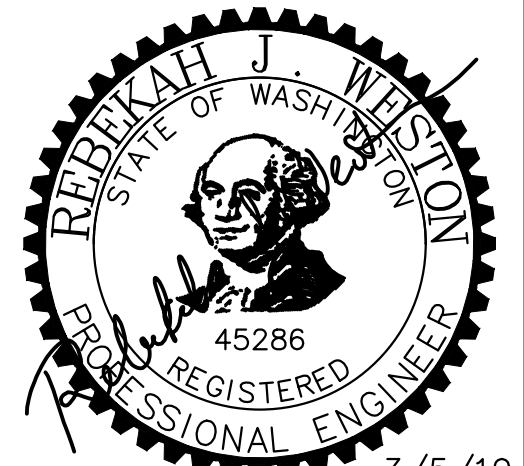


NEAREST EXISTING FIRE HYDRANT (BOULEVARD PLACE)



RED BARN ENGINEERING INC.
6610 NE 181ST ST, STE 2
KENMORE, WA 98028
PH. (425) 419-4979
REDBARN-ENGINEERING.COM

811
CALL BEFORE YOU DIG



DESIGN: RJW
DRAWN: RJW
CHECKED: RJW

REV/SUBMITAL	DATE

PROJECT NAME:
LEE-BOYLE SFR
PROJECT ADDRESS:
4150 BOULEVARD PLACE,
MERCER ISLAND WA 98040

SHEET TITLE:
GRADING, DRAINAGE &
UTILITIES PLAN

SHEET NO.:
C2.0

RB PROJECT NO.:
19-0011

22"x34" - 19-0011 Lee-Boyle SFR_C2.0.dwg 2019-03-07 (ERIC HAINES)