

VERIFY SCALE
 BAR IS ONE INCH ON ORIGINAL DRAWING
 IF NOT ONE INCH ON THIS SHEET, ADJUST SCALES ACCORDINGLY

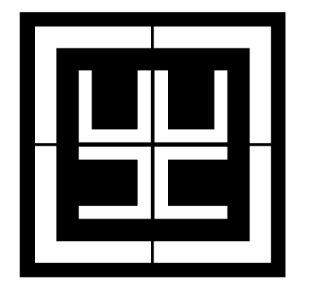
NOTE:
 1. SEE HILLSIDE IMPROVEMENT PLAN SHEET S1 FOR INFORMATION NOT NOTED.
 2. POST-SLIDE TOPOGRAPHY SHOWN FOR REFERENCE BY TERRANE, DATED 5 JUNE 2019.

CIVIL LEGEND:

- 1. (SP) [diagonal hatching] - STOCKPILE EXPOSED SOIL COVERING
- 2. (CE) [dashed line with arrows] - STABILIZED CONSTRUCTION ACCESS
- 3. (FF) [line with 'x' markers] - FILTER FENCE
- 4. (VEG) [line with 'v' markers] - TREE & VEGETATION PROTECTION

DATE	DESCRIPTION	REVISED

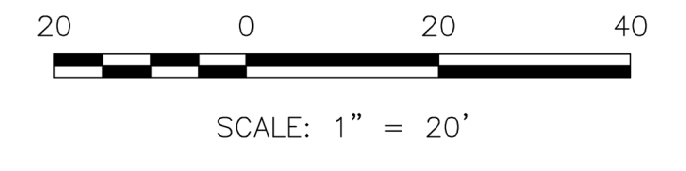
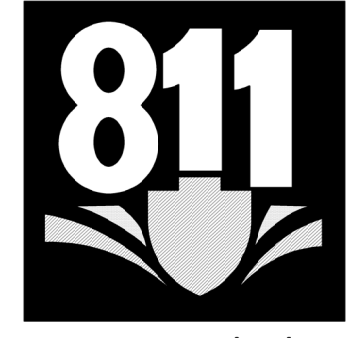
HARBOR CONSULTING ENGINEERS
 ENGINEERS • PLANNERS • SURVEYORS
 3316 FUHRMAN AVENUE EAST, SUITE 250
 SEATTLE, WASHINGTON 98102
 PHONE: (206) 709-2397



KNOPF RESIDENCE
 9507 SE 43rd Street
 MERCER ISLAND WA, 98040

TEMPORARY EROSION & SEDIMENT CONTROL PLAN

TEMPORARY EROSION AND SEDIMENT CONTROL PLAN
 SCALE: 1" = 20'-0"

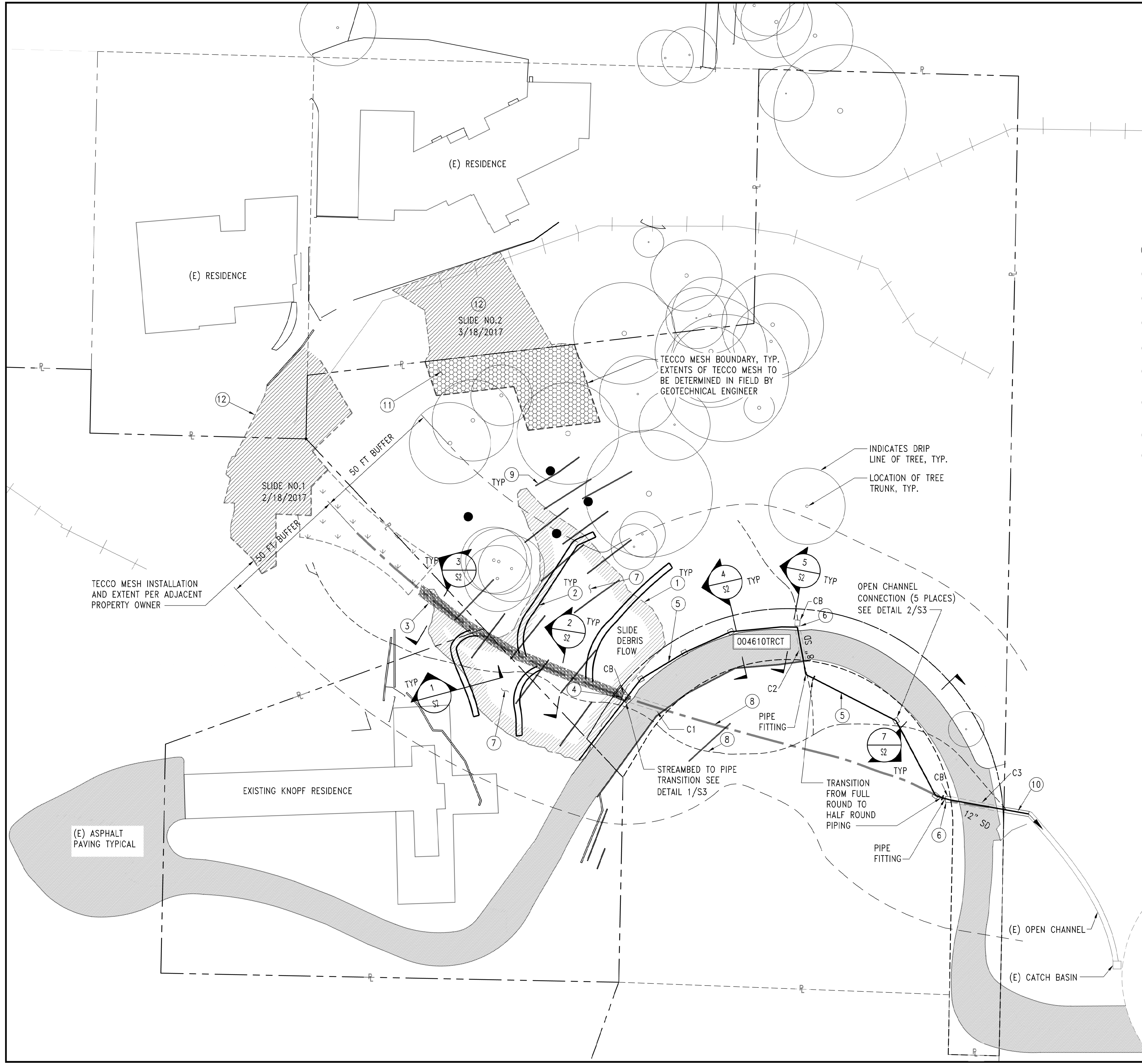


JOB NO.	19023.00
DATE:	8.22.19
SHEET:	5 OF 8
DWG.#	C3

PERMIT SET

VERIFY SCALE
 BAR IS ONE INCH ON ORIGINAL DRAWING
 IF NOT ONE INCH ON THIS SHEET, ADJUST SCALES ACCORDINGLY

SCALE: AS NOTED
 CHK BY: DJ
 DRW BY: GF
 REF:



KEY SYMBOLS FOR WORK ITEMS:

- ① - REMOVE AND DISPOSE OF SLIDE DEBRIS SOILS AS REQUIRED TO INSTALL GROUND WATER COLLECTION SYSTEM. APPROXIMATELY 75 CY.
- ② - PERFORATED PIPE IN CRUSHED ROCK TRENCH WITH GEO-TEXTILE FOR GROUND WATER AND SURFACE RUNOFF COLLECTION AND DISCHARGE TO STREAM BED.
- ③ - LINE REESTABLISHED STREAM BED AND EXPOSED EXISTING STREAM BED WITH QUARRY SPALLS.
- ④ - REDIRECT STREAM BED FROM CATCH BASIN TO OPEN CHANNEL. REMOVE CATCH BASIN AND PLUG CULVERT.
- ⑤ - MANUFACTURED 12" HALF ROUND OPEN CHANNEL.
- ⑥ - RAISE CATCH BASIN RIM ELEVATION TO 3" BELOW PAVEMENT AND REPLACE WITH INCLINED SCREEN. CLEAN CATCH BASIN AND CULVERT.
- ⑦ - INSTALL LANDSCAPE ROCKERIES AND NATIVE PLANTINGS IN SLIDE AREA. SEE PLANTING PLAN BY NORTHWEST ENVIRONMENTAL CONSULTING.
- ⑧ - RE-ALIGN STREAM TO OPEN CHANNEL.
- ⑨ - REMOVE TEMPORARY EMERGENCY CATCHMENT WALLS.
- ⑩ - INSTALL 12" DIA HALF-ROUND PIPE FOR STREAM TO DOWN SLOPE DISCHARGE LOCATION.
- ⑪ - INSTALL TECCO MESH SLOPE STABILIZATION. SEE SLOPE STABILIZATION PLAN FOR DETAILS
- ⑫ - TECCO MESH SLOPE STABILIZATION PERFORMED BY ADJACENT PROPERTY OWNERS

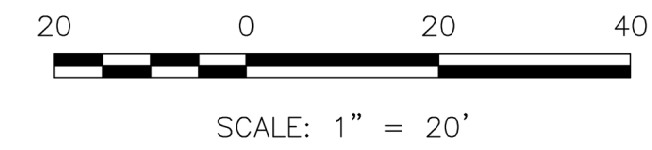
NOTE
 1. TECCO MESH IS MANUFACTURED BY GEOBRUGG WWW.GEOBRUGG.COM TELEPHONE: 1-505-771-4080

TOPOGRAPHY NOT SHOWN FOR CLARITY. SEE SHEET R1 FOR POST SLIDE TOPOGRAPHY.

HILLSIDE IMPROVEMENTS PLAN
 SCALE: 1" = 20'-0"

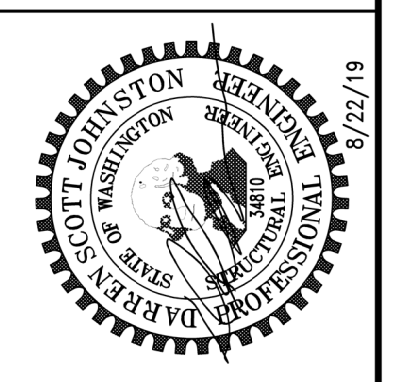
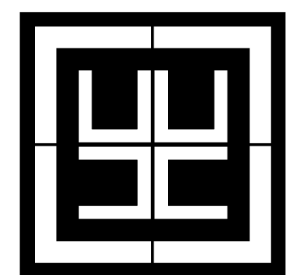


Know what's below.
 Call before you dig.



DATE	DESCRIPTION	REVISED

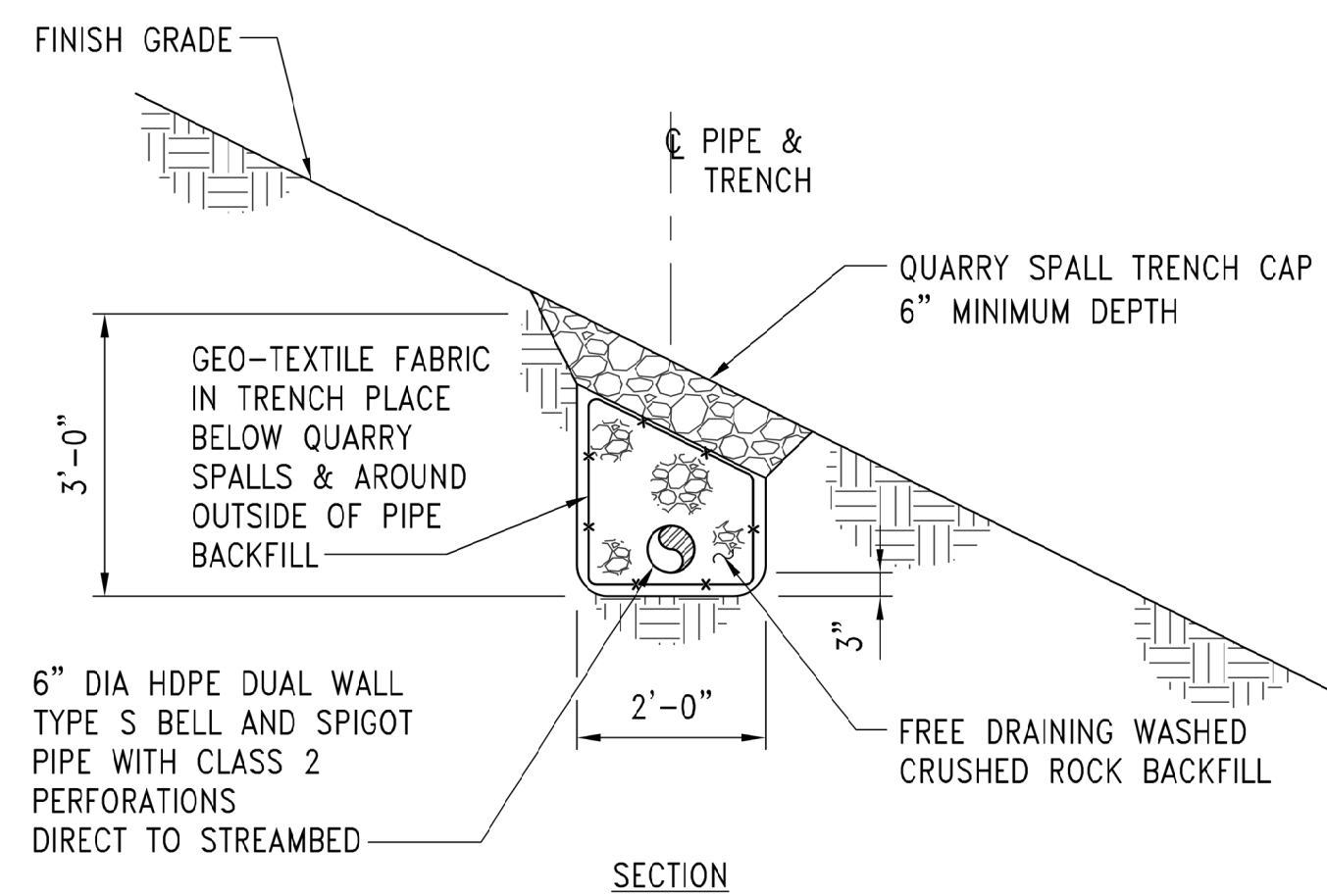
HARBOR CONSULTING ENGINEERS
 ENGINEERS • PLANNERS • SURVEYORS
 3316 FUHRMAN AVENUE EAST, SUITE 250
 SEATTLE WASHINGTON 98102
 PHONE: (206) 709-2397



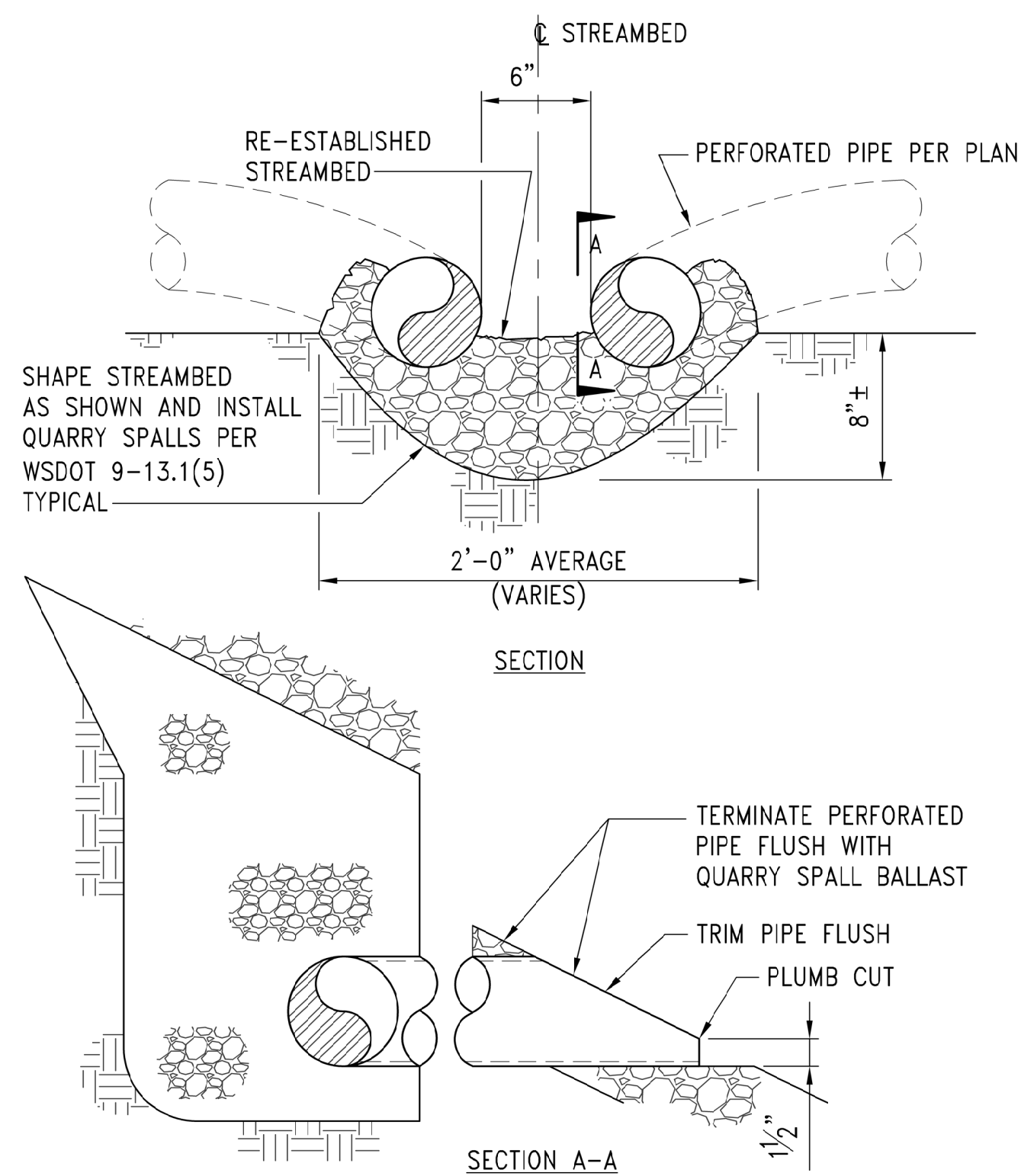
KNOPF RESIDENCE
 9507 SE 43rd Street
 MERCER ISLAND WA. 98040
HILLSIDE IMPROVEMENTS PLAN

JOB NO. 19023.00
 DATE: 8.22.19
 SHEET: 6 OF 8
 DWG.# S1

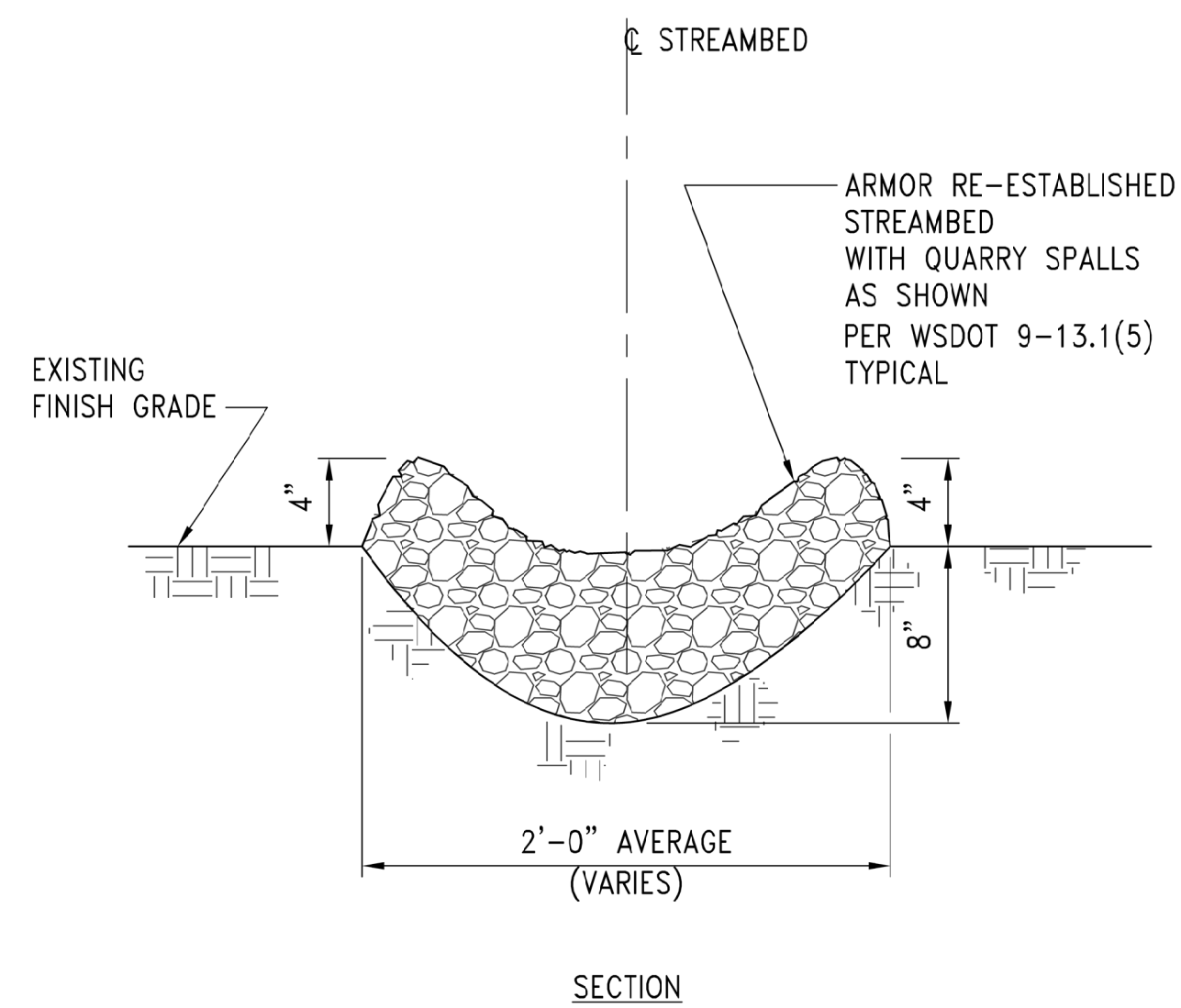
PERMIT SET



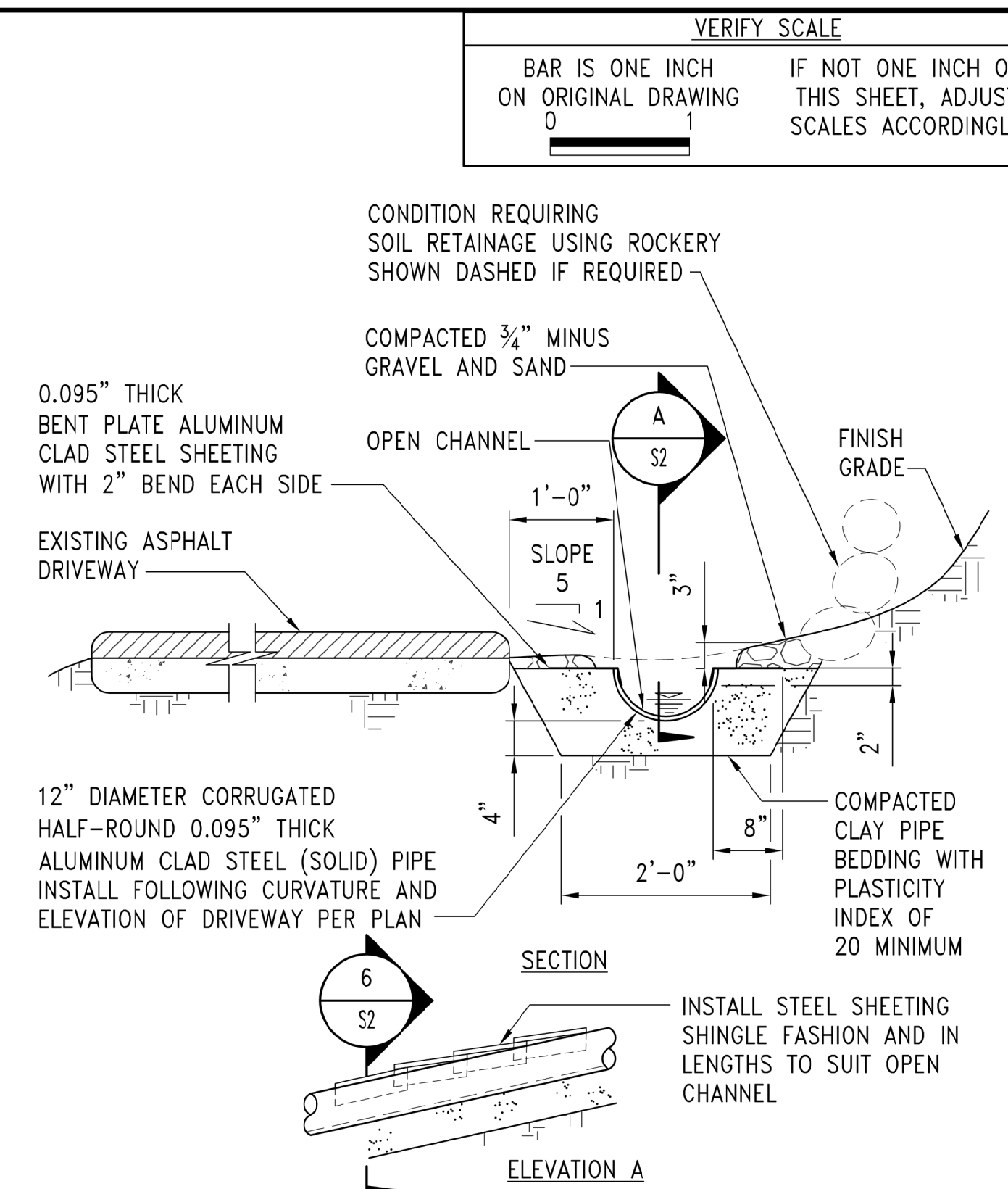
TYP GROUND WATER COLLECTION TRENCH
 SCALE: 1/2" = 1'-0"



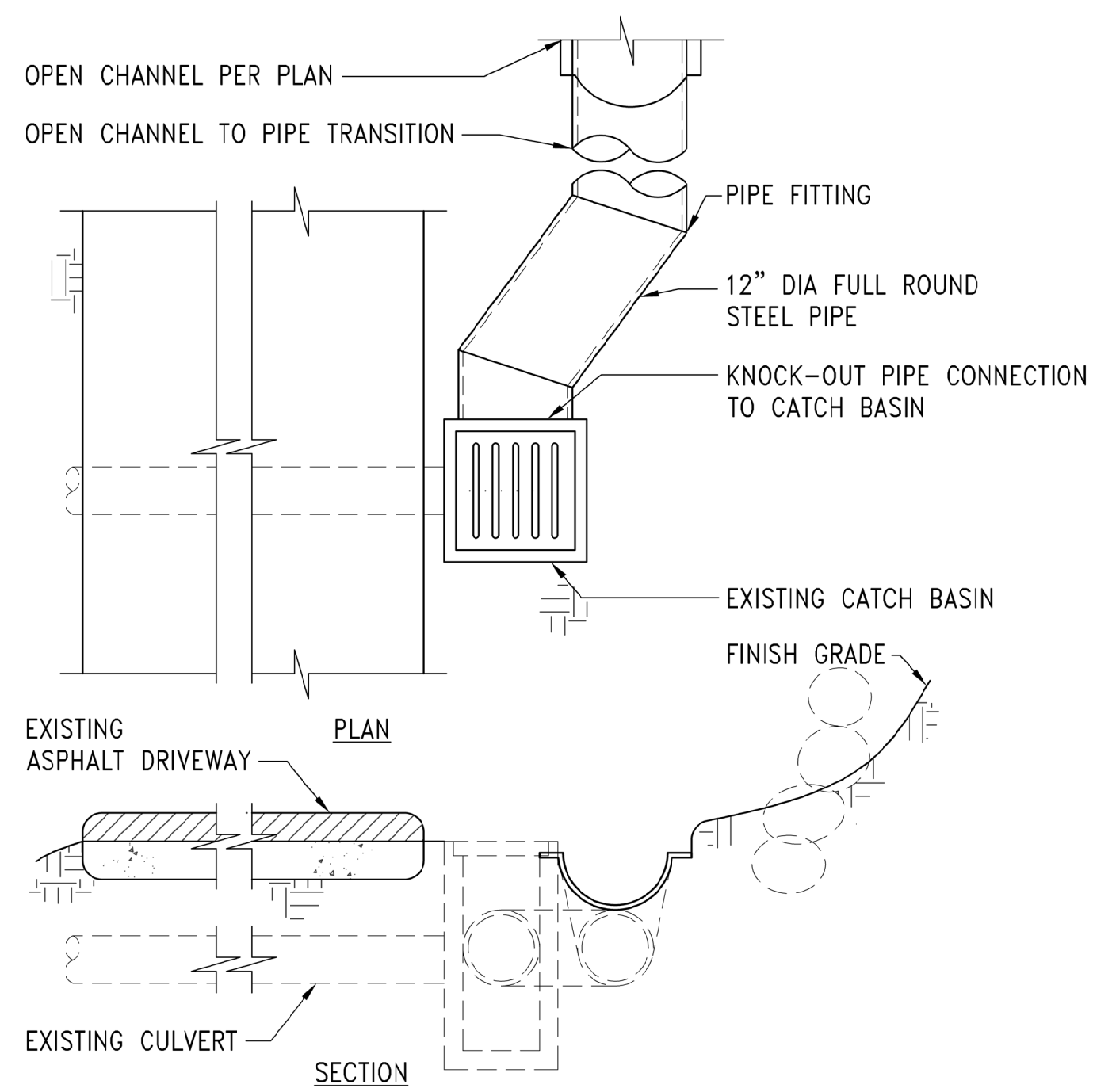
TYP STREAMBED W/ GROUND WATER COLLECTION PIPE TERMINATION
 SCALE: 1 1/2" = 1'-0"



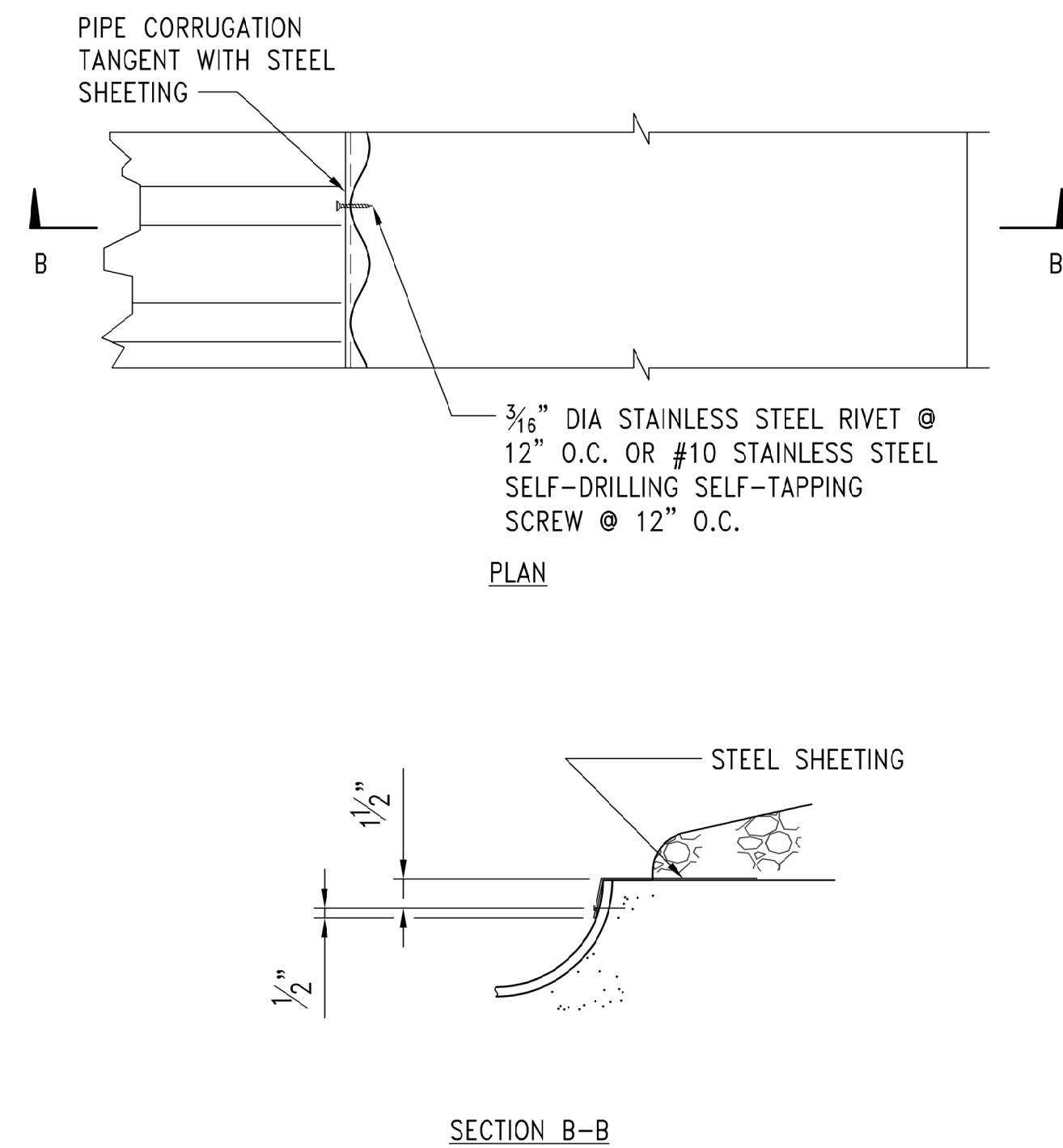
TYP EXISTING STREAMBED ARMORING
 SCALE: 1 1/2" = 1'-0"



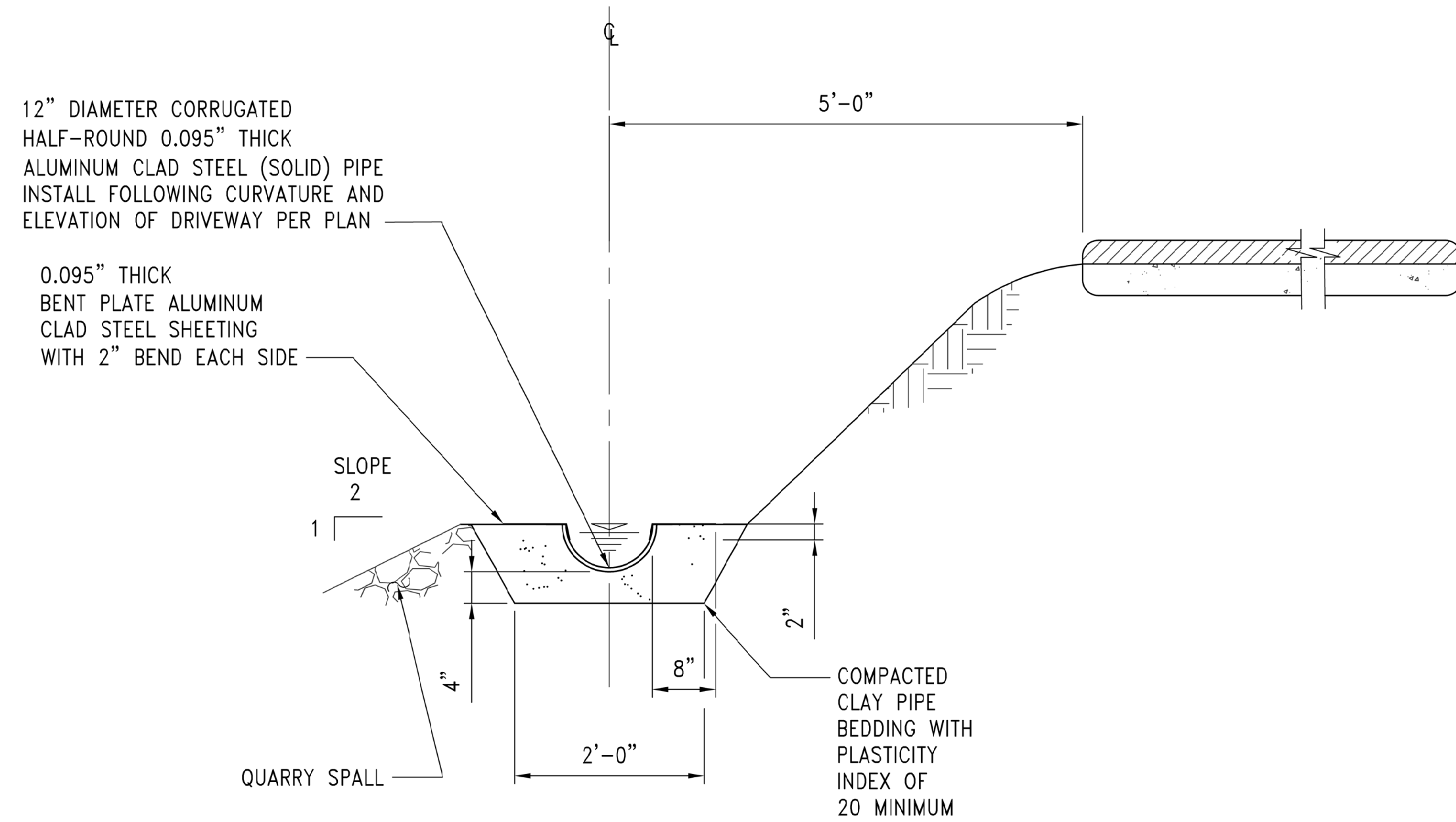
TYP OPEN CHANNEL UP SLOPE OF DRIVEWAY
 SCALE: 3/4" = 1'-0"



TYP CATCH BASIN CONNECTION
 SCALE: 3/4" = 1'-0"



TYP PIPE EDGE ARMORING CONNECTION
 SCALE: 1 1/2" = 1'-0"



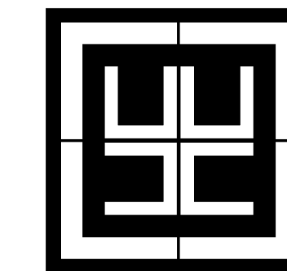
TYP OPEN CHANNEL DOWN SLOPE OF DRIVEWAY
 SCALE: 3/4" = 1'-0"

NOTE:
 1. SEE DETAIL 4/S2 FOR INFORMATION NOT NOTED
 2. RAISE CATCH BASIN LID ELEVATION AS REQUIRED

VERIFY SCALE
 BAR IS ONE INCH ON ORIGINAL DRAWING
 IF NOT ONE INCH ON THIS SHEET, ADJUST SCALES ACCORDINGLY

SCALE:	AS NOTED
CHK BY:	DJ
DRW BY:	TL
REF:	
REVISION	DATE DESCRIPTION

HARBOR CONSULTING ENGINEERS
 ENGINEERS • PLANNERS • SURVEYORS
 3316 FUHRMAN AVENUE EAST, SUITE 250
 SEATTLE, WASHINGTON 98102
 PHONE: (206) 709-2397



KNOPF RESIDENCE
 9507 SE 43rd Street
 MERCER ISLAND WA. 98040
 HILLSIDE IMPROVEMENTS DETAILS



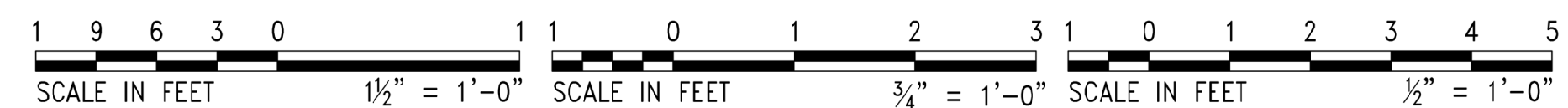
JOB NO. 19023.00

DATE: 8.22.19

SHEET: 7 OF 8

DWG.# S2

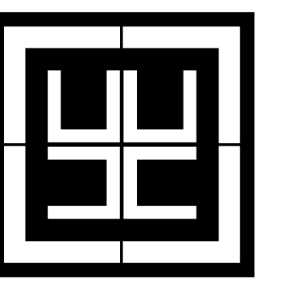
PERMIT SET



VERIFY SCALE
 BAR IS ONE INCH ON ORIGINAL DRAWING
 IF NOT ONE INCH ON THIS SHEET, ADJUST SCALES ACCORDINGLY

DATE	DESCRIPTION	REVISED

HARBOR CONSULTING ENGINEERS
 ENGINEERS • PLANNERS • SURVEYORS
 3816 FUHRMAN AVENUE EAST, SUITE 250
 SEATTLE, WASHINGTON 98102
 PHONE: (206) 709-2397

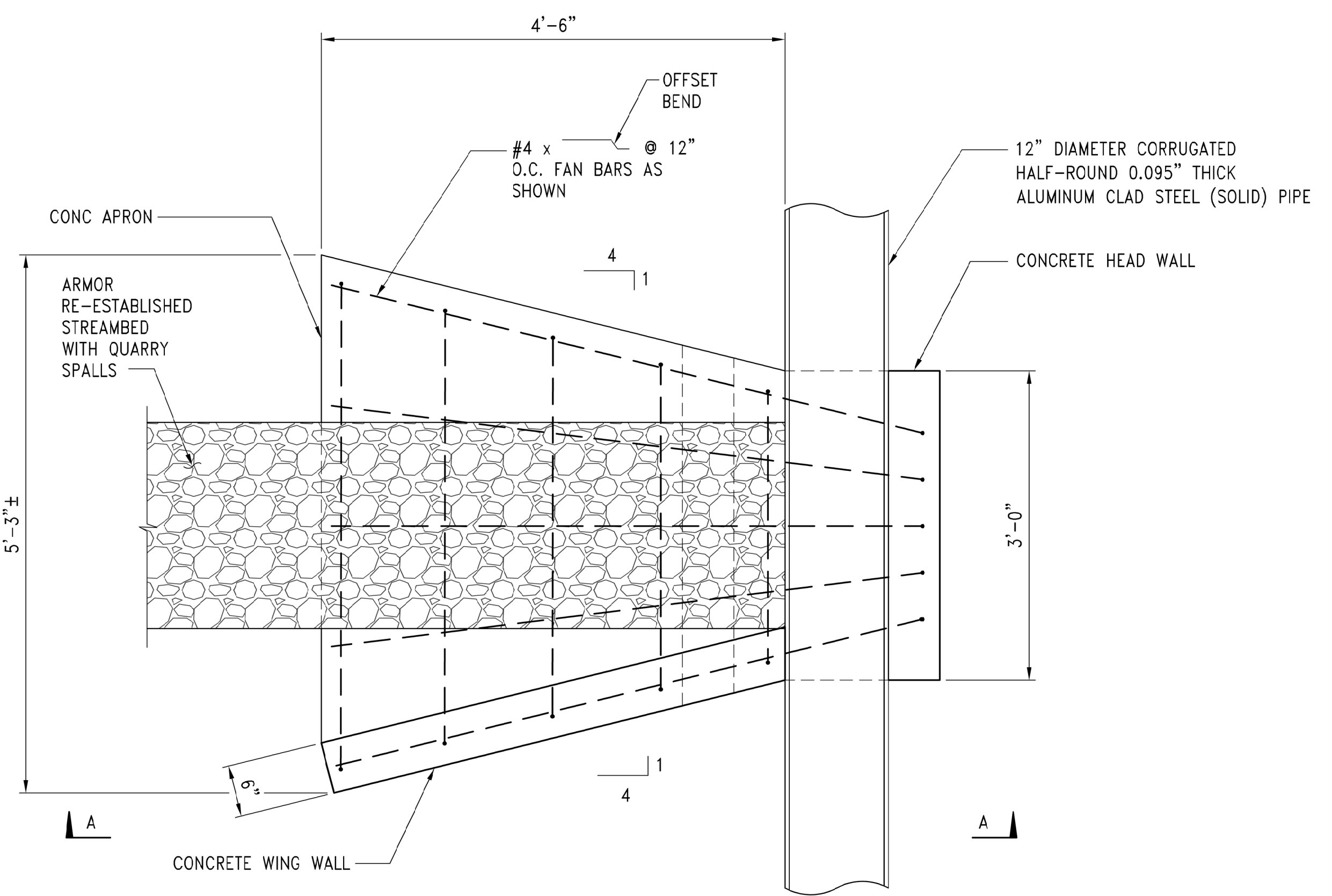


KNOPF RESIDENCE
 9507 SE 43rd Street
 MERCER ISLAND WA, 98040
 HILLSIDE IMPROVEMENTS DETAILS

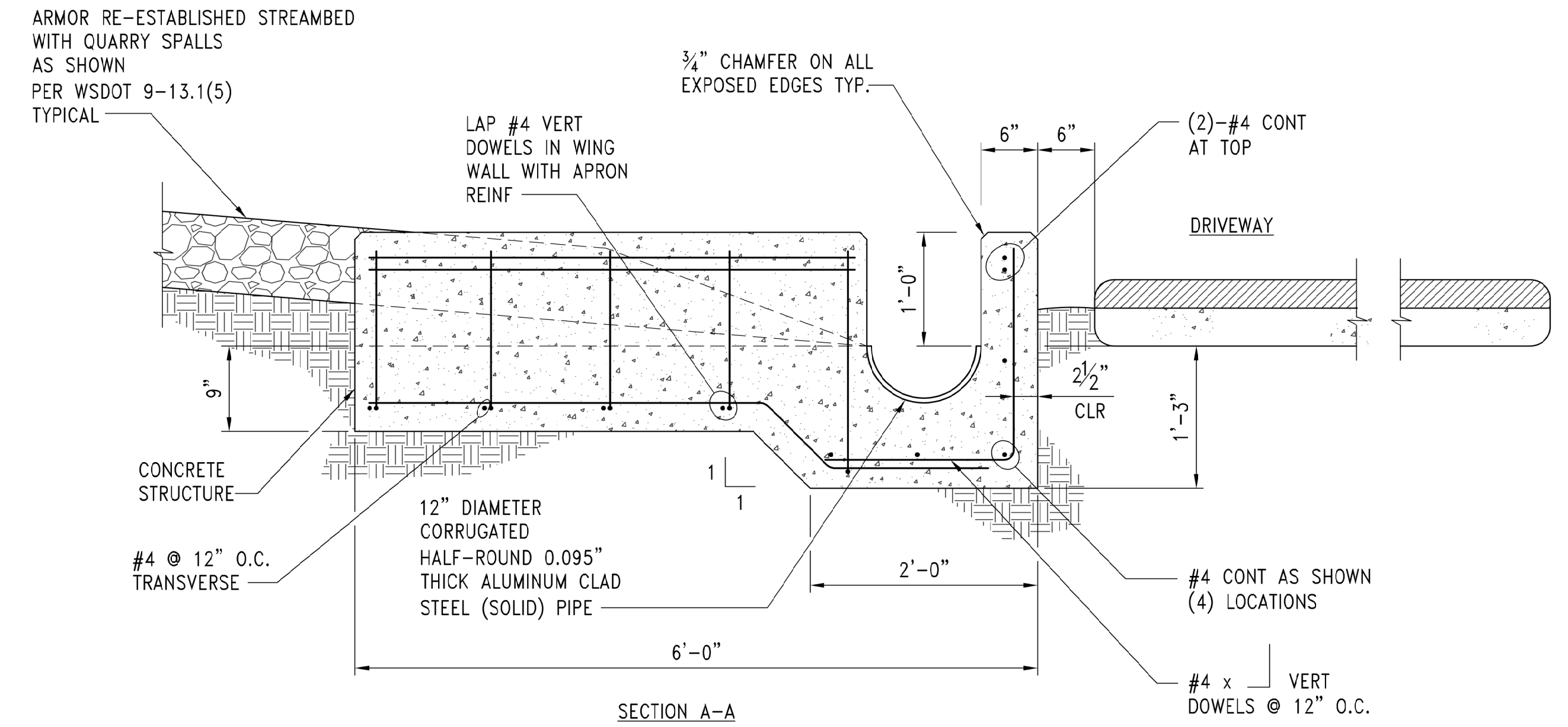
JOB NO. 19023.00
 DATE: 8.22.19
 SHEET: 8 OF 8
 DWG.# S3



SCALE IN FEET
 1" = 1'-0"



PLAN

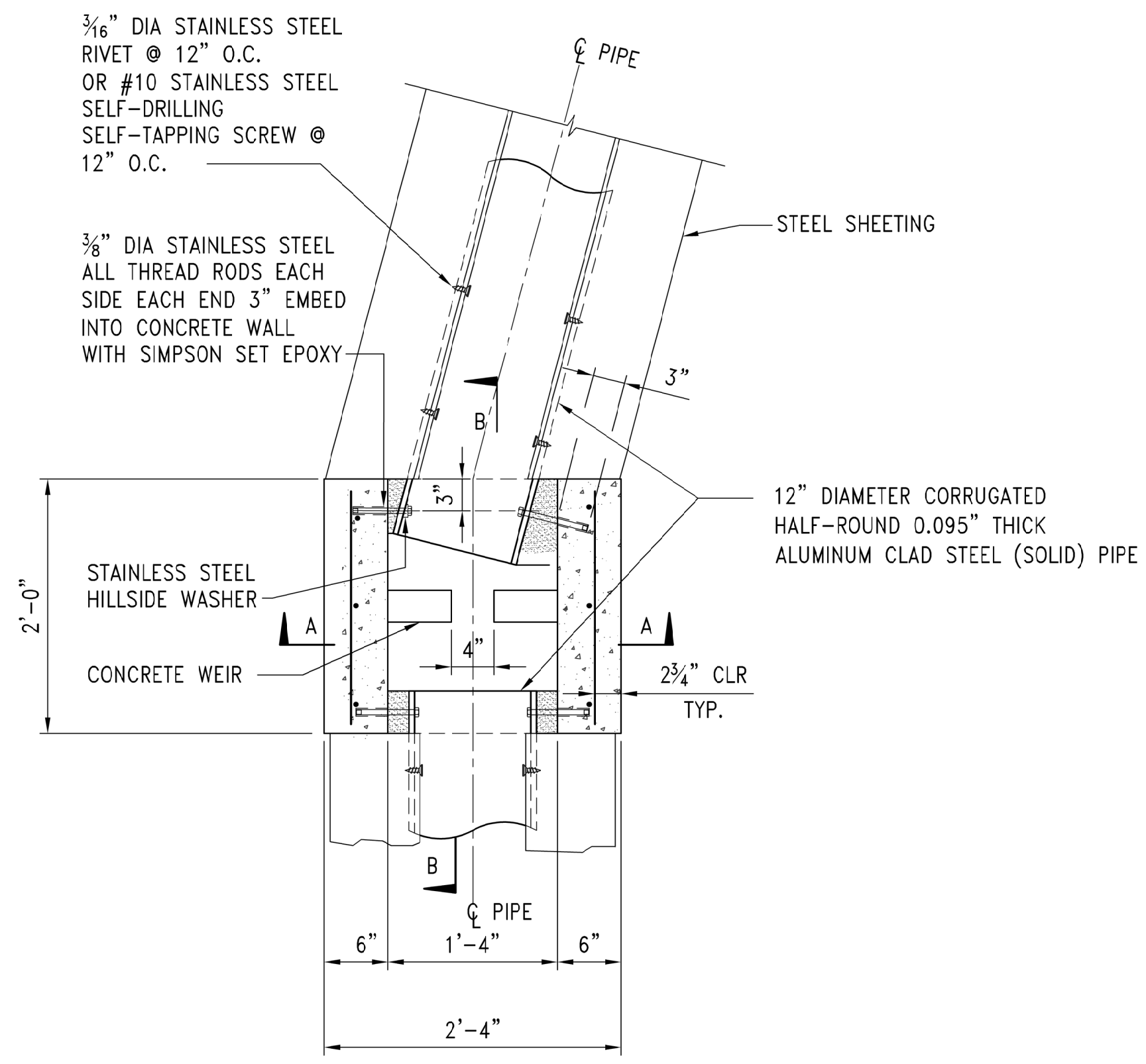


SECTION A-A

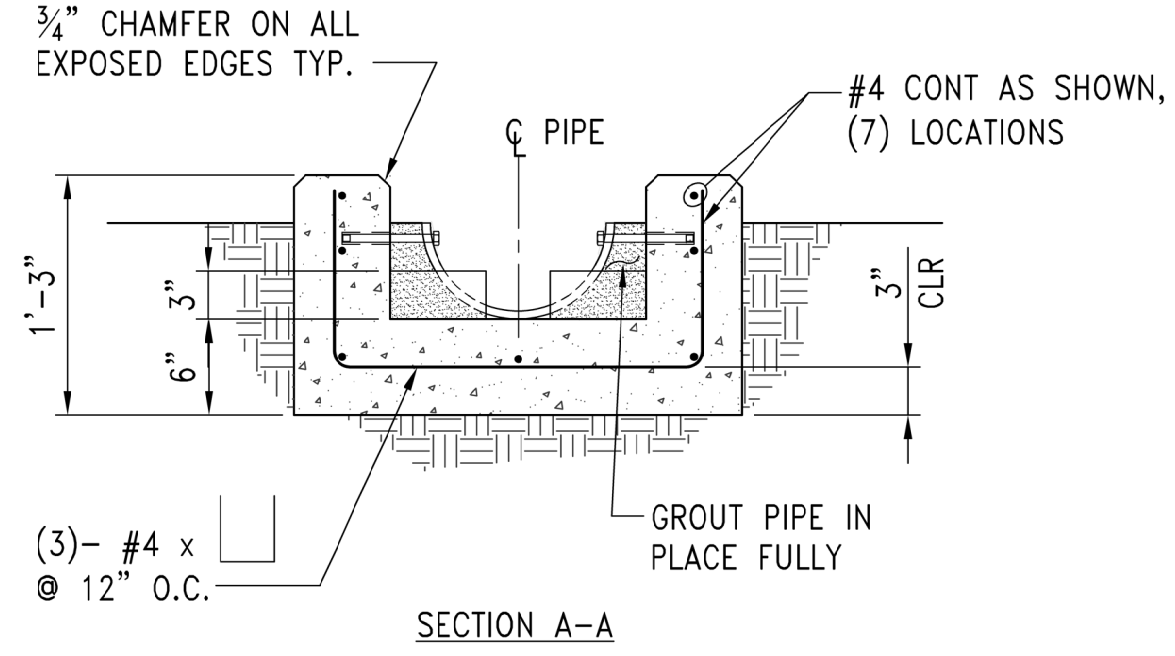
STREAMBED TO PIPE TRANSITION

SCALE: 1" = 1'-0"

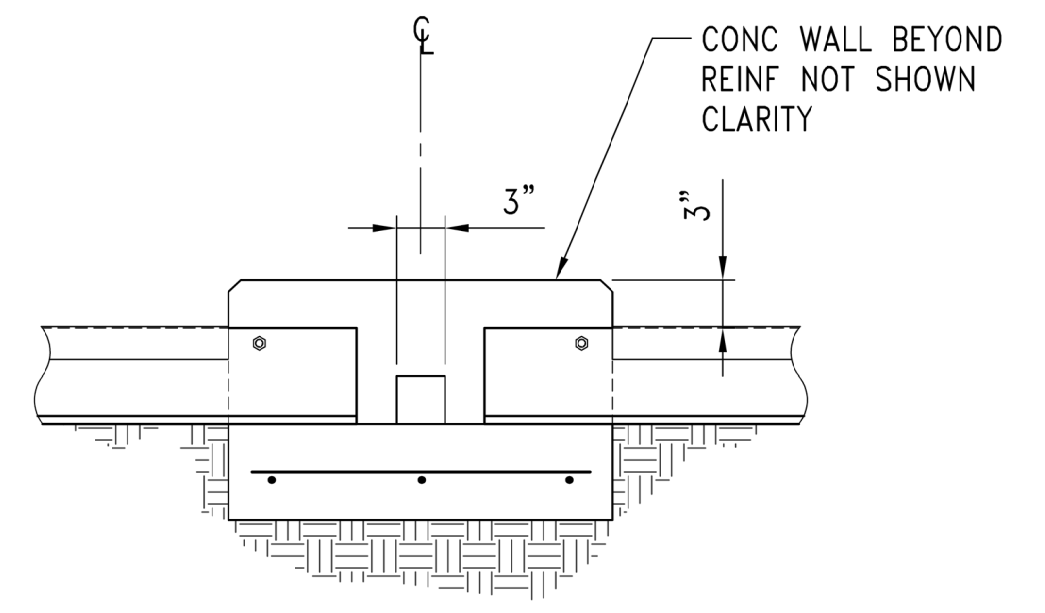
1



PLAN



SECTION A-A



SECTION B-B

TYP. OPEN CHANNEL CONNECTION

SCALE: 1" = 1'-0"

2

PERMIT SET