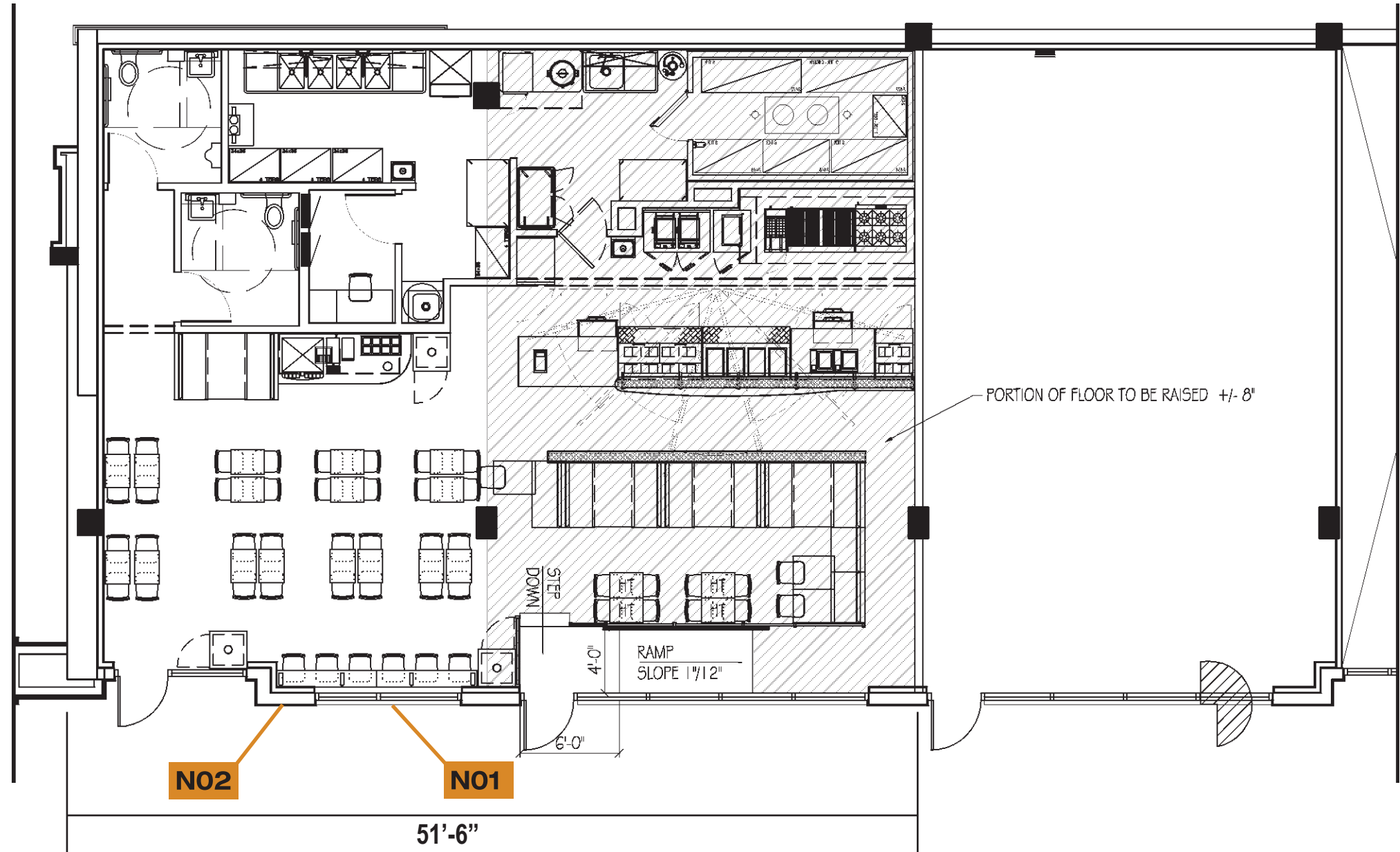



## SCOPE OF WORK

**N01** Remove existing signage  
- Install (1) WM-18-RW

**N02** Remove existing signage  
- Install (1) B-V-5



**PLAN VIEW**  
1/8" = 1'-0"

 <p><b>City Lights</b> Sign Company 902 NW 49th St Seattle WA 98107 Ph: 206 -789-4747 Cell: 206-255-7029</p>	<b>Client:</b>		<b>Date:</b>	<p>This drawing was created to assist you. The drawing and ideas are the property of City Lights Sign Co. and cannot be replicated or used without the written permission of City Lights Sign Co. Ask your City Lights Sign Co rep for written permission.</p>	
	QDOBA		03.05.24		
	<b>Address:</b>	<b>City:</b>	<b>Job Number:</b>		
	7650 SE 27TH ST SUITE 106	MERCER ISLAND 98040			

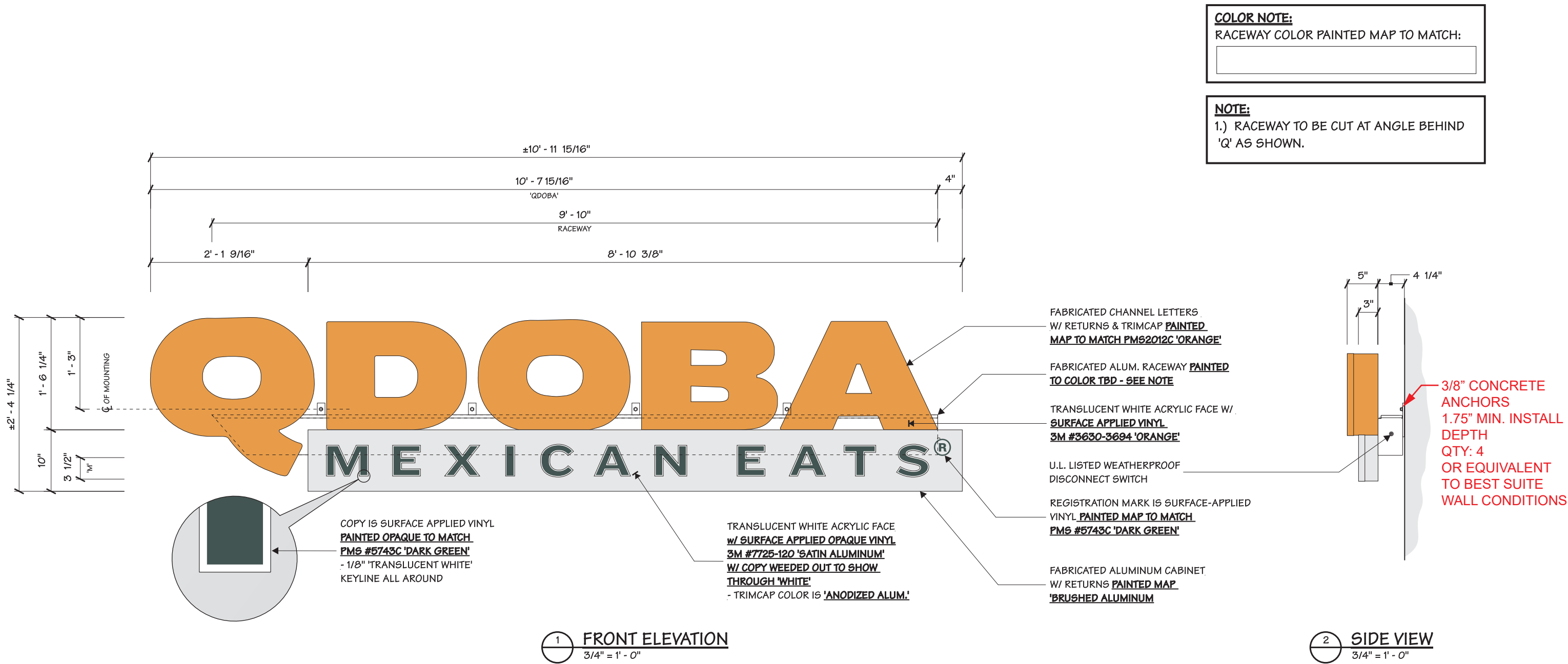
Created: 05/10/17 - TM  
Rev1: 08/24/17 - TM  
Rev2: 08/26/17 - TM  
Rev3: 09/27/17 - TM



Qdoba Store #2390  
7650 SE 27th St Suite 106  
Mercer Island, WA 98040



This document is the sole property of Architectural Graphics, Inc., and all design, manufacturing, reproduction, use and sale rights regarding the same are expressly forbidden. It is submitted under a confidential relationship, for a special purpose, and the recipient, by accepting this document assumes custody and agrees that this document will not be copied or reproduced in whole or in part, nor its contents revealed in any manner or to any person except for the purpose for which it was tendered, nor any special features peculiar to this design be incorporated in other projects.



N01

<p>City Lights Sign Company 902 NW 49th St Seattle WA 98107 Ph: 206 -789-4747 Cell: 206-255-7029</p>	<b>Client:</b>		<b>Date:</b>	This drawing was created to assist you. The drawing and ideas are the property of City Lights Sign Co. and cannot be replicated or used without the written permission of City Lights Sign Co. Ask your City Lights Sign Co rep for written permission.
	QDOBA		03.05.24	
	<b>Address:</b>	<b>City:</b>	<b>Job Number:</b>	
	7650 SE 27TH ST SUITE 106	MERCER ISLAND 98040		

TOTAL SQUARE FEET: 25.9

Created: 05/10/17 - TM  
Rev1: 08/24/17 - TM  
Rev2: 08/26/17 - TM  
Rev3: 09/27/17 - TM



Qdoba Store #2390  
7650 SE 27th St Suite 106  
Mercer Island, WA 98040

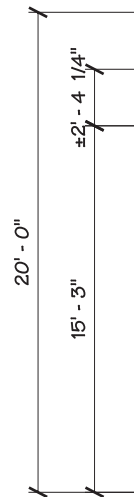


This document is the sole property of Architectural Graphics, Inc., and all design, manufacturing, reproduction, use and sale rights regarding the same are expressly forbidden. It is submitted under a confidential relationship, for a special purpose, and the recipient, by accepting this document assumes custody and agrees that this document will not be copied or reproduced in whole or in part, nor its contents revealed in any manner or to any person except for the purpose for which it was tendered, nor any special features peculiar to this design be incorporated in other projects.



**EXISTING FRONT ELEVATION**  
NTS

Current = 45 S/F




**PROPOSED FRONT ELEVATION**

1/8" = 1'-0"

WM-18-RW = 25 S/F

**N01**

 <p>City Lights Sign Company 902 NW 49th St Seattle WA 98107 Ph: 206 -789-4747 Cell: 206-255-7029</p>	Client:		Date:	This drawing was created to assist you. The drawing and ideas are the property of City Lights Sign Co. and cannot be replicated or used without the written permission of City Lights Sign Co. Ask your City Lights Sign Co rep for written permission.
	QDOBA		03.05.24	
	Address:	City:	Job Number:	
	7650 SE 27TH ST SUITE 106	MERCER ISLAND 98040		

Created: 05/10/17 - TM  
Rev1: 08/24/17 - TM  
Rev2: 08/26/17 - TM  
Rev3: 09/27/17 - TM

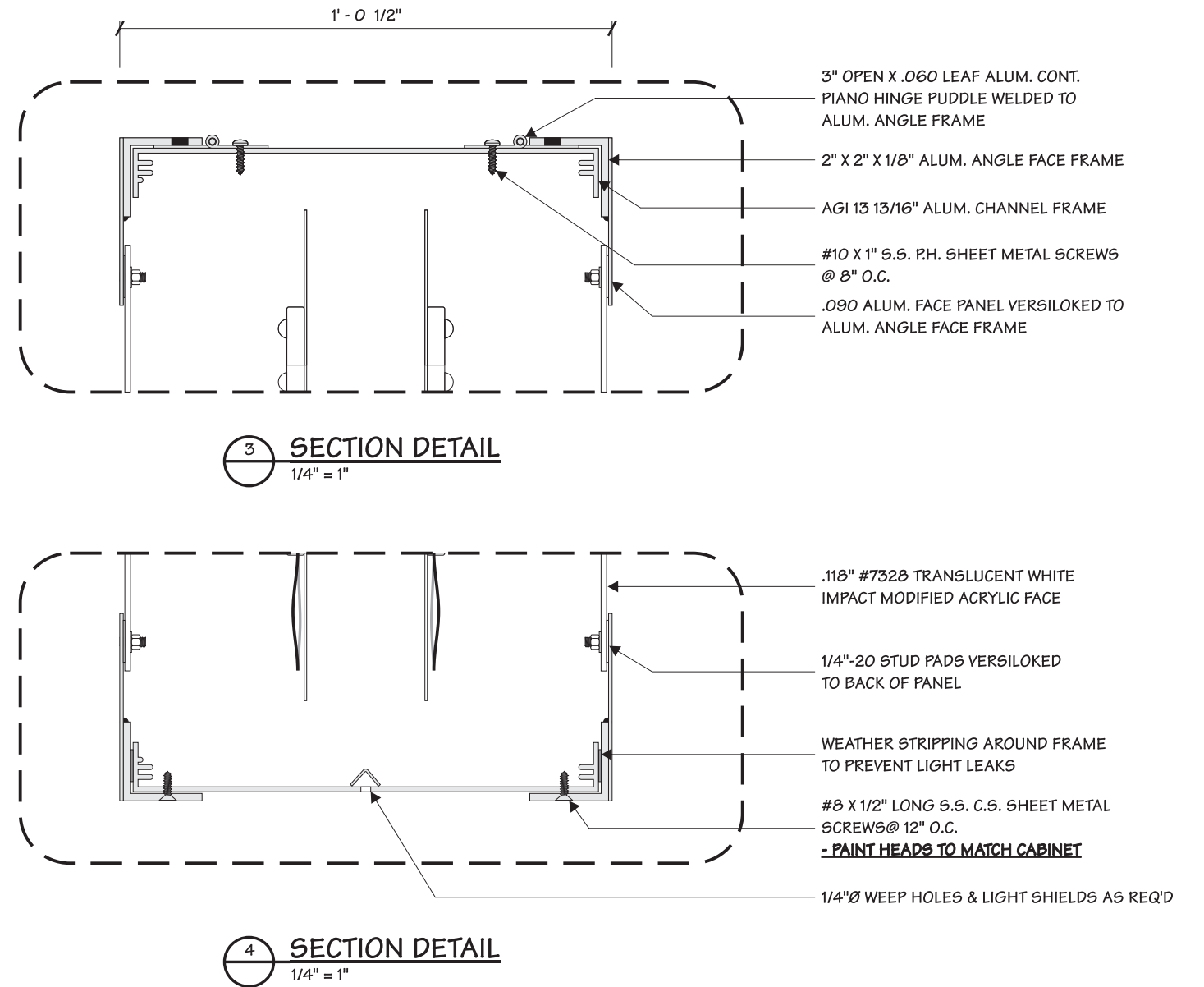
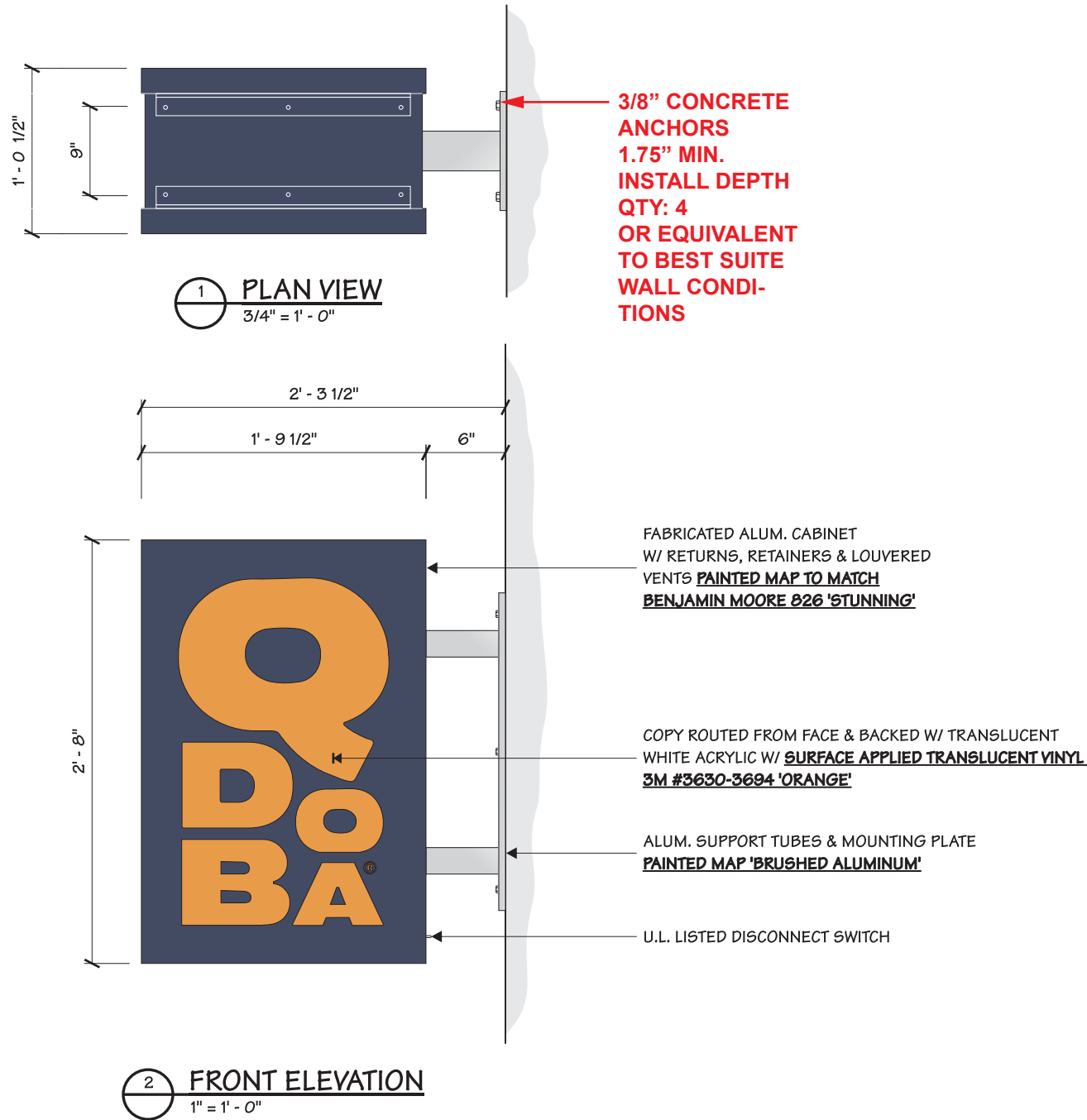


Qdoba Store #2390  
7650 SE 27th St Suite 106  
Mercer Island, WA 98040



This document is the sole property of Architectural Graphics, Inc., and all design, manufacturing, reproduction, use and sale rights regarding the same are expressly forbidden. It is submitted under a confidential relationship, for a special purpose, and the recipient, by accepting this document assumes custody and agrees that this document will not be copied or reproduced in whole or in part, nor its contents revealed in any manner or to any person except for the purpose for which it was tendered, nor any special features peculiar to this design be incorporated in other projects.





N02

<p>City Lights Sign Company 902 NW 49th St Seattle WA 98107 Ph: 206-789-4747 Cell: 206-255-7029</p>	Client:		Date:	<p>This drawing was created to assist you. The drawing and ideas are the property of City Lights Sign Co. and cannot be replicated or used without the written permission of City Lights Sign Co. Ask your City Lights Sign Co rep for written permission.</p>	
	QDOBA		03.05.24		
	Address:	City:	Job Number:		
	7650 SE 27TH ST SUITE 106	MERCER ISLAND 98040			

TOTAL SQUARE FEET: 4.8

Created: 05/10/17 - TM  
Rev1: 08/24/17 - TM  
Rev2: 08/26/17 - TM  
Rev3: 09/27/17 - TM



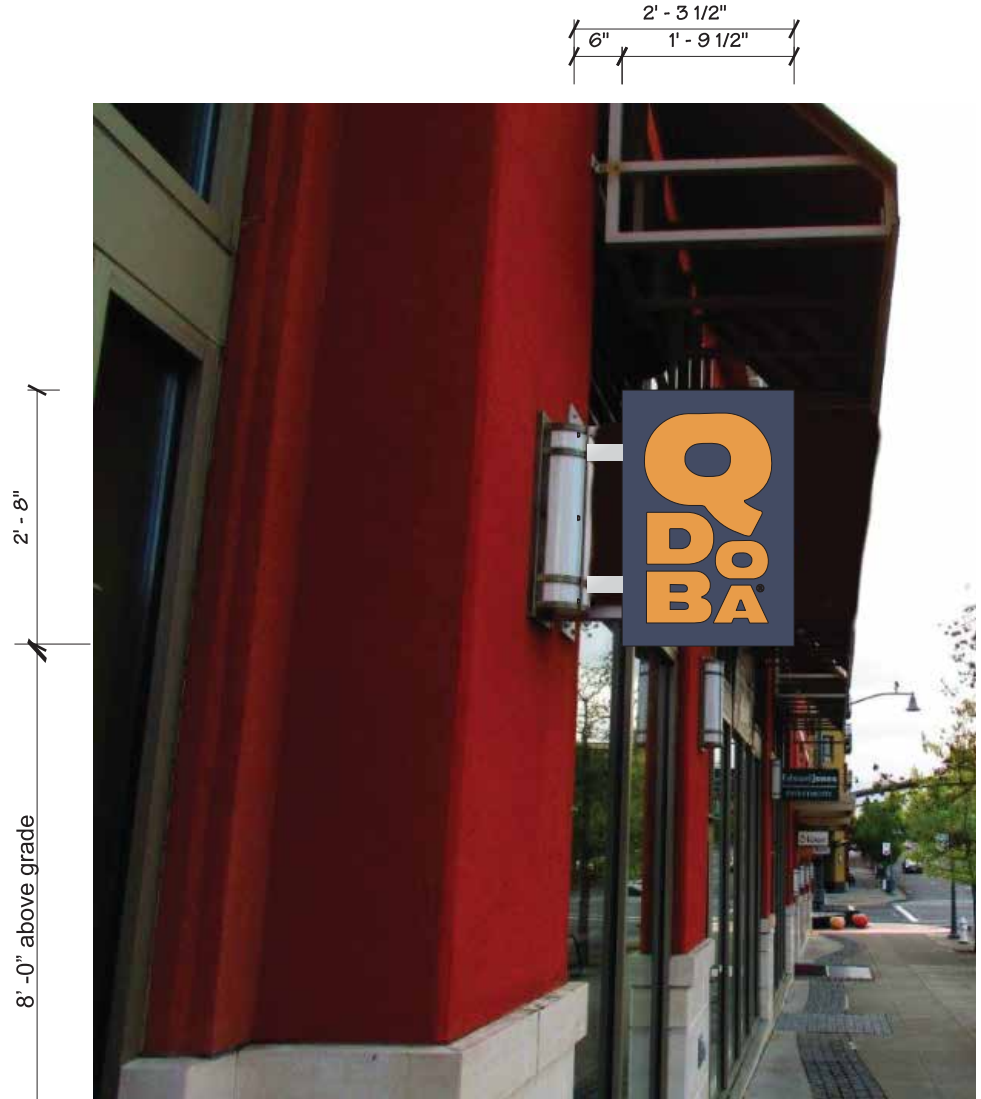
Qdoba Store #2390  
7650 SE 27th St Suite 106  
Mercer Island, WA 98040



This document is the sole property of Architectural Graphics, Inc., and all design, manufacturing, reproduction, use and sale rights regarding the same are expressly forbidden. It is submitted under a confidential relationship, for a special purpose, and the recipient, by accepting this document assumes custody and agrees that this document will not be copied or reproduced in whole or in part, nor its contents revealed in any manner or to any person except for the purpose for which it was tendered, nor any special features peculiar to this design be incorporated in other projects.



**PROPOSED FRONT ELEVATION**  
1/8" = 1'-0"




**PROPOSED ELEVATION**  
1/2" = 1'-0"



**EXISTING ELEVATION**  
NTS

Current 6 S/F

**N02**

 <p><b>City Lights</b> Sign Company 902 NW 49th St Seattle WA 98107 Ph: 206 -789-4747 Cell: 206-255-7029</p>	<b>Client:</b>		<b>Date:</b>	
	QDOBA		03.05.24	
	<b>Address:</b>	<b>City:</b>	<b>Job Number:</b>	
	7650 SE 27TH ST SUITE 106	MERCER ISLAND 98040		
<p>This drawing was created to assist you. The drawing and ideas are the property of City Lights Sign Co. and cannot be replicated or used without the written permission of City Lights Sign Co. Ask your City Lights Sign Co rep for written permission.</p>				

Created: 05/10/17 - TM  
Rev1: 08/24/17 - TM  
Rev2: 08/26/17 - TM  
Rev3: 09/27/17 - TM



Qdoba Store #2390  
7650 SE 27th St Suite 106  
Mercer Island, WA 98040



This document is the sole property of Architectural Graphics, Inc., and all design, manufacturing, reproduction, use and sale rights regarding the same are expressly forbidden. It is submitted under a confidential relationship, for a special purpose, and the recipient, by accepting this document assumes custody and agrees that this document will not be copied or reproduced in whole or in part, nor its contents revealed in any manner or to any person except for the purpose for which it was tendered, nor any special features peculiar to this design be incorporated in other projects.