



Urban Forestry Services

BARTLETT CONSULTING

Divisions of The F.A. Bartlett Tree Expert Company

**Title: 3003 77th Ave Project – Mercer South Park Project
Full Tree Inventory and Health Assessment
Level 2 Basic Tree Risk Assessment
3003 77th Ave SE
Mercer Island, Washington**

Prepared for: Ryan Companies US Inc.
Attn: Marc Gearhart
110 110 Ave NE
Bellevue, Washington 98004

Prepared by: Urban Forestry Services | Bartlett Consulting
Miles Becker
ISA Certified Arborist® #PN-7808A
ISA Tree Risk Assessment Qualified

Reviewed By: Jim Barborinas, Principal

Contents: **Summary**
Introduction
Findings
Recommendations
Description of Assessment Levels
Tree Assessment Site Plan
Tree Assessment Matrix
Critical Root Zone Explanation

Date: July 15, 2020; updated July 24, 2020

Summary

Another one-hundred sixty (160) trees on the old Farmer's Insurance building property at 3003 77th Avenue SE in Mercer Island were inventoried and their health assessed. All but two (2) of the assessed trees are viable and can be retained. Of the inventoried trees, seventy-six (76) are considered significant trees in the city. The building renovations propose to remove four (4) trees on the property that were assessed in an earlier arborist report on May 13, 2020. Based on this inventory, 94.5 percent of the viable significant trees on the property can be retained. Tree protection measures are not necessary for the retained trees whose critical root zones are outside of the areas with construction activities.

15119 McLean Road
Mount Vernon, WA 98273

Office: 360.428.5810
Fax: 360.428.1822
Cell: 360.770.9921

Introduction

The commercial office building at 3003 77th Avenue SE near the corner of SE 32nd Street near downtown Mercer Island is planned to be renovated. The removal of four trees on the property is proposed due to severe grade changes along the east building façade. The trees requested for removal were assessed in an earlier report on May 13, 2020. That earlier report also included a row of six (6) small trees in the adjacent right of way that will need tree protection during construction in order to be retained.

For projects of this size, the City of Mercer Island requires an assessment of all trees on the subject property when significant trees will be removed (MICC 19.10.10(C)(1)). This report includes an inventory and health assessment of all trees on the subject property. Trees with a minimum trunk diameter of 10 inches measured at 4.5 feet above grade (DBH) were assessed in addition to smaller trees which contributed a substantial portion of canopy cover to the property.

I was on-site on June 23 and June 24, 2020, to inspect the trees in a Level 2 Basic Tree Risk Assessment. The time frame for this Level 2 Basic Tree Risk Assessment is three years from the date of inspection.

Findings

A Tree Assessment Matrix with photos and detailed information on each of the one-hundred sixty (160) trees is attached. A Tree Assessment Site Plan is also attached that indicates the approximate location of each of the trees.

Of the one-hundred sixty (160) trees on the property proposed for retention, the most common species with seventy-one (71) individuals is Armstrong maple (*Acer x freemanii* 'Armstrong'), a columnar cultivar planted in the parking garage area. Norway maple (*Acer platanoides*) is also common with thirty-seven (37) trees. There are ten (10) trees or less of red alder (*Alnus rubra*), flowering plum (*Prunus species*), Douglas fir (*Pseudotsuga menziesii*), Western red cedar (*Thuja plicata*), Japanese snowbell (*Styrax japonicus*), red maple (*Acer rubrum*), bitter cherry (*Prunus emarginata*), Southern magnolia (*Magnolia grandiflora*), Pacific madrone (*Arbutus menziesii*), Scouler's willow (*Salix scouleriana*), big leaf maple (*Acer macrophyllum*), and black locust (*Robinia pseudoacacia*).

Approximately 90 percent of the assessed trees are between fair to good condition. Most of the trees in poor health are planted in locations with high visibility. The plum trees in the planting areas of the plaza north of the building had consistent health issues, such as significant crown dieback and decay in the primary stems. The plums in poor condition may continue to decline in the long-term. Some of the Armstrong maple trees in the parking garage also have dieback in the crown and they showed a wide range in vigor. The health of the parking area trees could be improved with better soil and water management. Another area of the property with trees in poor condition was the native vegetation south of the building. English ivy (*Hedera helix*) is abundant and severely encroaching on the crown of some of the taller trees. Controlling the ivy may not save all the trees in the natural area, but it will prevent the decline of the trees in better health. Only two trees, #233, a Pacific madrone, and #336, a Japanese snowbell, are almost dead and non-viable.

There are eighty-four (84) trees in this report that have a DBH less than 10 inches. They are primarily the Armstrong maple trees in the parking garage and some of the Norway maple trees on the berm along 77th Ave SE. There are only five (5) trees larger than a 20-inch DBH, the largest of which is a bitter cherry, tree #341, at 28.6 inches. The tallest trees on the property are generally native species near the southwest corner and the northwest corner.

The critical root zones (CRZ) of the one-hundred sixty (160) retained trees on the subject property do not overlap with the grading outside the east building façade where the four trees are proposed for removal. At this time, all the described construction activities are outside the CRZ of retained trees, which is used to determine the limits of allowable disturbance in this report. Changes to the building renovation plans or expansion of construction activities into the CRZ of retained trees will require additional review and potentially a new tree protection plan.

Recommendations

Retain the one-hundred fifty-eight (158) viable trees on the subject property. The percentage of retained significant trees is well above the minimum 30 percent required for development (MICC 19.10.10(C)(2)). Based on the description of the planned building renovations, the construction activities will be outside the CRZ of retained trees. No tree protection plan is required for the trees on the property at this time.

Justification for the removal of the four (4) trees, recommendations for the number of replacement trees, and tree protection for the retained trees in the public right of way that will be impacted by the renovation are contained in the previous arborist report submitted on May 13, 2020.

Let us know if you have questions regarding this inventory and health assessment.



Tree Risk Assessment Level Descriptions

The tree risk assessment process is based on factors present at the time of assessment. Because trees are living, growing things that change in size and condition over time, the tree assessment process must also recognize and anticipate where and when future assessments should be performed. The Tree Risk Assessment Qualification (TRAQ) training and methodology, developed and administered by the International Society of Arboriculture is the best available methodology for tree risk assessment at this time. There are three levels of assessment that may be considered and employed according to the expectations of the owner or manager, conditions of the site and of the trees involved:

Level 1 Limited Visual Assessment: Includes a broad overview of an individual tree or group of trees near specified targets, conducted to identify obvious defects or other conditions of concern. A limited visual assessment typically focuses on identifying trees with imminent and/or probable likelihood of failure. Level 1 assessments do not always meet the criteria for a "risk assessment" if they do not include documented analysis and evaluation of individual trees. This level is typically used for large populations of trees as a means to quickly identify trees with imminent and/or probable likelihood of failure, at a specified schedule and/or immediately after storms.

Level 1 assessments may be done as walk-by, drive-by or aerial patrols as requested by the tree owner or manager. They may not provide enough information to develop risk mitigation recommendations. They can help identify specific areas and/or trees for further inspection at Level 2 or 3. Trees found to require a Level 2 Basic Assessment are assessed, mapped and documented at the higher level at this time. Trees determined to need a Level 3 Advanced Tree Assessment are documented and recommended for additional testing and analysis. The owner is notified with options discussed.

Level 2 Basic Assessment: This is a detailed visual inspection of a tree and its surrounding site, and a synthesis of the information collected. It requires that a tree risk assessor walk completely around the tree, looking at the site, buttress roots, trunk, and branches. This basic assessment may include the use of simple tools to gain additional information about the tree or defects. Our Level 2 Basic Assessment Trees are all typically tagged, mapped and information gathered and retained for each tree. Risk mitigation recommendations may be derived from this level of inspection. Defects found in a Level 2 Basic Tree Assessment may require a Level 3 assessment for further testing and analysis. The owner is notified with options discussed.

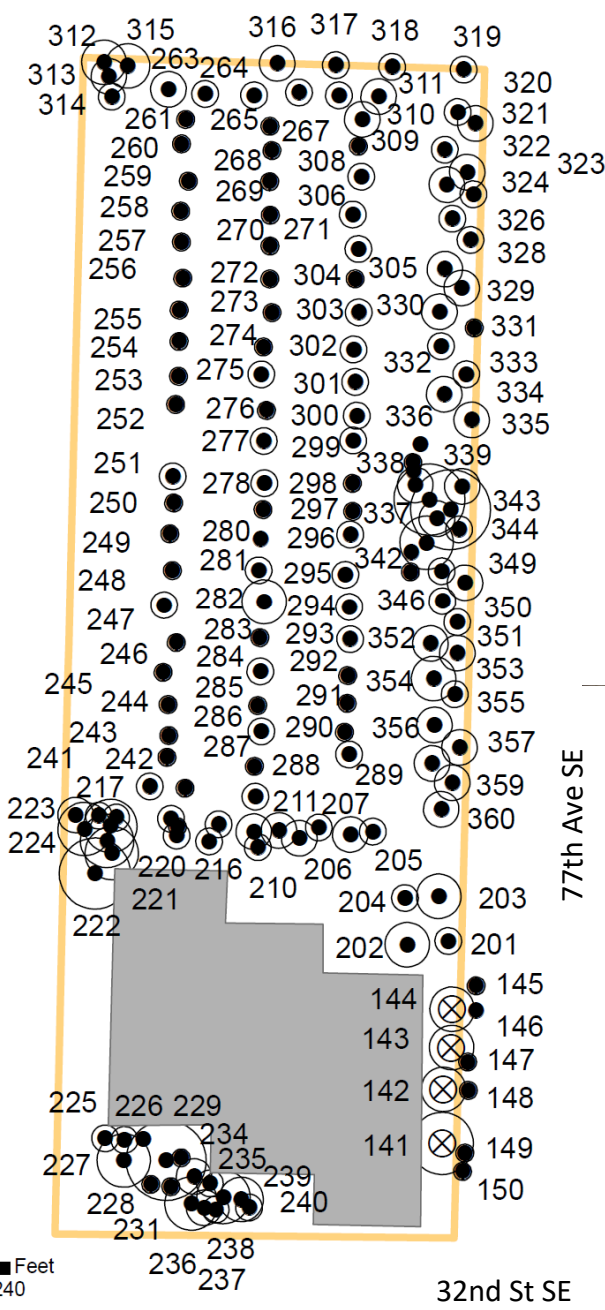
Level 3 Advanced Assessment: Advanced assessments are performed to provide more highly detailed information about specific tree components, defects, targets or site conditions. An advanced assessment is performed in conjunction with or after a Level 2 Basic Assessment if the assessor determines the need for (requires) additional information. This level is particularly useful where there are concerns about trees that may otherwise be of high value, or to obtain better information on how serious or extensive a particular defect is. The Level 3 Advanced Tree assessment may include but not be limited to a root crown inspection with air spade, Resistograph or Tomograph use to determine sound wood or an aerial crown inspection.

The preliminary Level 1 Limited Visual Assessment if requested would help determine where field assessments at Level 2 and Level 3 will be needed.

15119 McLean Road
Mount Vernon, WA 98273

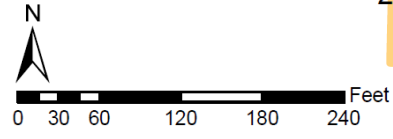
Office: 360.428.5810
Fax: 360.428.1822
Cell: 360.770.9921

ID	Species	DBH	ID	Species	DBH	ID	Species	DBH
141	Red oak	23.1	238	Red alder	18.0	270	Armstrong maple	6.0
142	Norway maple	15.7	239	Red alder	16.5	271	Armstrong maple	6.3
143	Norway maple	15.0	240	Red alder	9.0	272	Armstrong maple	6.8
144	Norway maple	17.5	241	Armstrong maple	9.2	273	Armstrong maple	8.0
145	Callery pear	7.0	242	Armstrong maple	7.2	274	Armstrong maple	7.3
146	Callery pear	1.2	243	Armstrong maple	6.4	275	Armstrong maple	8.6
147	Callery pear	6.5	244	Armstrong maple	5.6	276	Armstrong maple	4.9
148	Callery pear	6.7	245	Armstrong maple	6.4			
149	Callery pear	5.7	246	Armstrong maple	6.3			
150	Callery pear	7.5	247	Armstrong maple	6.9			
201	Plum	11.0	248	Armstrong maple	8.8			
202	Magnolia	16.5	249	Armstrong maple	6.5			
203	Plum	17.5	250	Armstrong maple	6.2			
204	Magnolia	9.3	251	Armstrong maple	8.0			
205	Plum	9.0	252	Armstrong maple	10.0			
206	Plum	12.9	253	Armstrong maple	7.9			
207	Plum	10.1	254	Armstrong maple	7.2			
208	Plum	11.6	255	Armstrong maple	7.9			
209	Plum	11.5	256	Armstrong maple	6.1			
210	Plum	13.8	257	Armstrong maple	7.3			
211	Plum	10.2	258	Armstrong maple	6.3			
212	Norway maple	10.2	259	Armstrong maple	6.3			
213	Norway maple	9.9	260	Armstrong maple	7.0			
214	Norway maple	10.4	261	Armstrong maple	5.1			
215	Norway maple	6.5	262	Armstrong maple	7.2			
216	Norway maple	9.9	263	Armstrong maple	12.4			
217	Western red cedar	10.8	264	Armstrong maple	10.8			
218	Western red cedar	19.4	265	Armstrong maple	10.1			
219	Western red cedar	19.2	266	Armstrong maple	10.2			
220	Western red cedar	19.5	267	Armstrong maple	6.9			
221	Western red cedar	9.1	268	Armstrong maple	5.5			
222	Douglas fir	11.8	269	Armstrong maple	7.3			
223	Douglas fir	19.5						
224	Western red cedar	25.4						
225	Red alder	9.0						
226	Red alder	8.5						
227	Scouler's willow	18.0						
228	Red alder	8.0						
229	Western red cedar	28.0						
230	Bigleaf maple	7.8						
231	Red alder	7.5						
232	Red alder	8.0						
233	Pacific madrone	19.0						
234	Red alder	14.4						
235	Red alder	8.5						
236	Pacific madrone	14.0						
237	Scouler's willow	9.5						



Legend

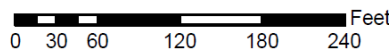
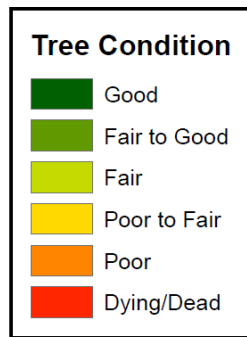
- Retain Tree
- ⊗ Removal Tree
- CRZ
- Existing Building
- ▭ Property Boundary



ID	Species	DBH
277	Armstrong maple	9.6
278	Armstrong maple	8.9
279	Armstrong maple	5.2
280	Armstrong maple	4.8
281	Armstrong maple	9.8
282	Armstrong maple	15.0
283	Armstrong maple	6.8
284	Armstrong maple	8.5
285	Armstrong maple	7.4
286	Armstrong maple	9.0
287	Armstrong maple	8.0
288	Armstrong maple	8.5
289	Armstrong maple	11.2
290	Armstrong maple	6.5
291	Armstrong maple	8.0
292	Armstrong maple	8.0
293	Armstrong maple	8.5
294	Armstrong maple	8.9
295	Armstrong maple	10.7
296	Armstrong maple	8.9
297	Armstrong maple	6.3
298	Armstrong maple	7.8
299	Armstrong maple	9.7
300	Armstrong maple	8.9
301	Armstrong maple	10.0
302	Armstrong maple	8.8
303	Armstrong maple	9.8
304	Armstrong maple	7.8
305	Armstrong maple	10.8
306	Armstrong maple	9.3
307	Armstrong maple	10.1
308	Armstrong maple	8.0
309	Armstrong maple	12.8
310	Armstrong maple	9.4
311	Armstrong maple	12.1
312	Douglas fir	17.2
313	Douglas fir	11.5
314	Douglas fir	11.2
315	Douglas fir	16.8
316	Red maple	14.5
317	Red maple	9.8
318	Red maple	10.3
319	Norway maple	9.8
320	Norway maple	11.2
321	Norway maple	12.4
322	Norway maple	10.3
323	Norway maple	13.1

ID	Species	DBH
323	Norway maple	13.1
324	Norway maple	12.6
325	Norway maple	9.2
326	Norway maple	10.9
327	Norway maple	10.9
328	Norway maple	12.2
329	Norway maple	13.8
330	Norway maple	11.8
331	Norway maple	7.8
332	Norway maple	9.1
333	Norway maple	8.7
334	Norway maple	12.1
335	Norway maple	13.3
336	Japanese snowbell	4.2
337	Japanese snowbell	5.8
338	Japanese snowbell	4.0
339	Bitter cherry	11.8
340	Honey locust	25.3
341	Bitter cherry	28.6
342	Norway maple	14.2
343	Douglas fir	14.2
344	Norway maple	10.3
345	Douglas fir	20.5
346	Norway maple	11.0
347	Norway maple	12.0
348	Japanese snowbell	4.3
349	Japanese snowbell	6.5
350	Norway maple	10.9
351	Norway maple	9.1
352	Norway maple	13.2
353	Norway maple	12.6
354	Norway maple	15.5
355	Norway maple	10.2

ID	Species	DBH
356	Norway maple	13.1
357	Norway maple	13.1
358	Norway maple	11.6
359	Norway maple	12.0
360	Norway maple	12.2



77th Ave SE

32nd St SE



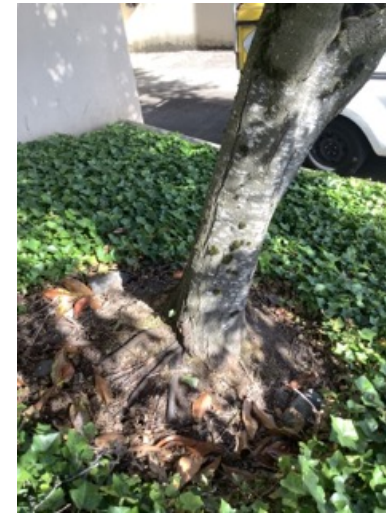
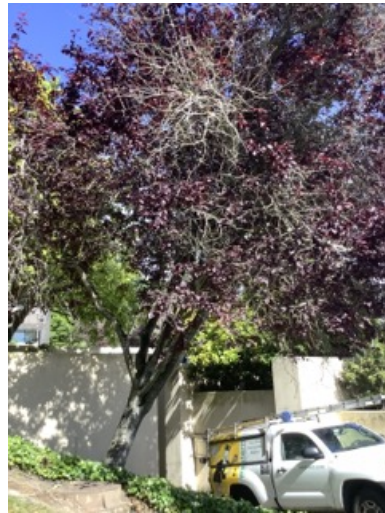
Urban Forestry Services
BARTLETT CONSULTING
 Divisions of The F.A. Bartlett Tree Expert Company

Tree Assessment Site Plan
77th Ave SE Project
Mercer Island, Washington

Tree Condition
July 14, 2020

Tree Assessment Matrix

Tree	Species	DBH (in)	Drip Rad.	CRZ (ft)	Vigor	Structure	Risk	Pres Value	Recommendations
201	Plum <i>Prunus sp</i>	11.0	12.0	11.0	Fair	Fair to Good	Low	Low	
Notes/ Defects	The tree is on a slope next to a drain. It is leaning north and there is some twig dieback.								



Tree Assessment Matrix

Tree	Species	DBH (in)	Drip Rad.	CRZ (ft)	Vigor	Structure	Risk	Pres Value	Recommendations
202	Southern magnolia <i>Magnolia grandiflora</i>	16.5	11.0	16.5	Good	Good	Low	Low	
Notes/ Defects	The tree is growing in a planting area next to garage. The foliage is slightly chlorotic.								



Tree Assessment Matrix

Tree	Species	DBH (in)	Drip Rad.	CRZ (ft)	Vigor	Structure	Risk	Pres Value	Recommendations
203	Plum <i>Prunus sp</i>	17.5	9.0	17.5	Poor to Fair	Fair	Low	Low	
Notes/ Defects	The tree is growing in a planting area. There is a fungus growing on the trunk and there is some branch dieback.								



Tree Assessment Matrix

Tree	Species	DBH (in)	Drip Rad.	CRZ (ft)	Vigor	Structure	Risk	Pres Value	Recommendations
204	Magnolia <i>Magnolia species</i>	9.3	13.0	9.3	Good	Good	Low	Low	
Notes/ Defects	The tree is growing in a planting area. There are several roots on the surface.								



Tree Assessment Matrix

Tree	Species	DBH (in)	Drip Rad.	CRZ (ft)	Vigor	Structure	Risk	Pres Value	Recommendations
205	Plum <i>Prunus sp</i>	9.0	7.0	9.0	Poor to Fair	Fair	Low	Low	
Notes/ Defects	There is some branch dieback.								



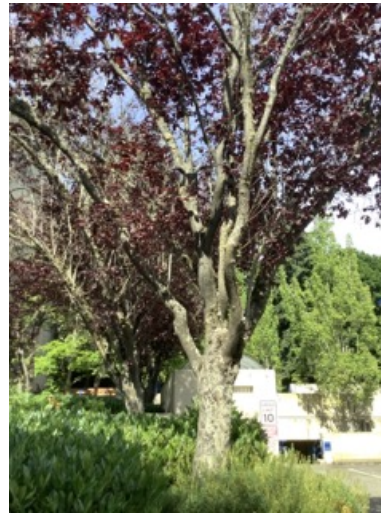
Tree Assessment Matrix

Tree	Species	DBH (in)	Drip Rad.	CRZ (ft)	Vigor	Structure	Risk	Pres Value	Recommendations
206	Plum <i>Prunus sp</i>	12.9	8.0	12.9	Poor	Fair to Good	Low	Low	Retain
Notes/ Defects	The crown is almost half dead. The tree is growing in a raised planting box.								



Tree Assessment Matrix

Tree	Species	DBH (in)	Drip Rad.	CRZ (ft)	Vigor	Structure	Risk	Pres Value	Recommendations
207	Plum <i>Prunus sp</i>	10.1	9.0	10.1	Poor to Fair	Fair to Good	Low	Low	
Notes/ Defects	The tree has major branch dieback.								



Tree Assessment Matrix

Tree	Species	DBH (in)	Drip Rad.	CRZ (ft)	Vigor	Structure	Risk	Pres Value	Recommendations
208	Plum <i>Prunus sp</i>	11.6	8.0	11.6	Poor to Fair	Fair	Low	Low	
Notes/ Defects	The tree has major branch dieback.								



Tree Assessment Matrix

Tree	Species	DBH (in)	Drip Rad.	CRZ (ft)	Vigor	Structure	Risk	Pres Value	Recommendations
209	Plum <i>Prunus sp</i>		8.0	11.5	Poor to Fair	Fair to Good	Low	Low	
Notes/ Defects	The tree has major branch dieback.								



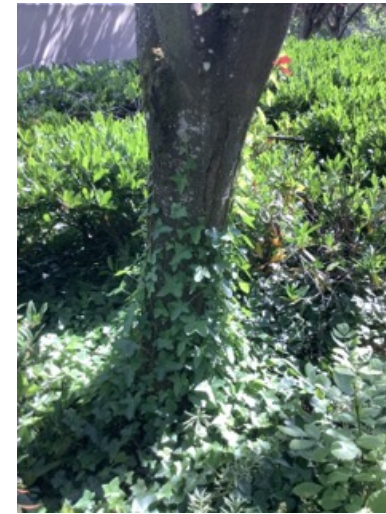
Tree Assessment Matrix

Tree	Species	DBH (in)	Drip Rad.	CRZ (ft)	Vigor	Structure	Risk	Pres Value	Recommendations
210	Plum <i>Prunus sp</i>	13.8	11.0	13.8	Poor to Fair	Fair to Good	Low	Low	
Notes/ Defects	The tree has branch dieback. It is close to the wall next to the planting area.								



Tree Assessment Matrix

Tree	Species	DBH (in)	Drip Rad.	CRZ (ft)	Vigor	Structure	Risk	Pres Value	Recommendations
211	Plum <i>Prunus sp</i>	10.2	10.0	10.2	Fair	Fair to Good	Low	Low	
Notes/ Defects	The tree has some branch dieback.								



Tree Assessment Matrix

Tree	Species	DBH (in)	Drip Rad.	CRZ (ft)	Vigor	Structure	Risk	Pres Value	Recommendations
212	Norway maple <i>Acer platanoides</i>	10.2	14.0	10.2	Good	Good	Low	Medium	
Notes/ Defects	The tree is in a group of five maples. It does not have any visible defects.								



Tree Assessment Matrix

Tree	Species	DBH (in)	Drip Rad.	CRZ (ft)	Vigor	Structure	Risk	Pres Value	Recommendations
213	Norway maple <i>Acer platanoides</i>	9.9	14.0	9.9	Good	Good	Low	Medium	
Notes/ Defects	The is the largest tree in the group. It is healthy with a good shape.								



Tree Assessment Matrix

Tree	Species	DBH (in)	Drip Rad.	CRZ (ft)	Vigor	Structure	Risk	Pres Value	Recommendations
214	Norway maple <i>Acer platanoides</i>	10.4	13.0	10.4	Fair	Fair	Low	Low	
Notes/ Defects	The tree has several codominant stems and low branch density.								



Tree Assessment Matrix

Tree	Species	DBH (in)	Drip Rad.	CRZ (ft)	Vigor	Structure	Risk	Pres Value	Recommendations
215	Norway maple <i>Acer platanoides</i>	6.5	8.0	6.5	Fair	Fair	Low	Low	
Notes/ Defects	This is the smallest tree in the group. It has a small crown.								



Tree Assessment Matrix

Tree	Species	DBH (in)	Drip Rad.	CRZ (ft)	Vigor	Structure	Risk	Pres Value	Recommendations
216	Norway maple <i>Acer platanoides</i>	9.9	10.5	9.9	Fair to Good	Fair	Low	Low	
Notes/ Defects	The crown is asymmetrical to the north and it has a slight lean in the same direction.								



Tree Assessment Matrix

Tree	Species	DBH (in)	Drip Rad.	CRZ (ft)	Vigor	Structure	Risk	Pres Value	Recommendations
217	Western red cedar <i>Thuja plicata</i>	10.8	11.0	10.8	Good	Fair to Good	Low	Low	
Notes/ Defects	The tree is in a group of five cedars. English ivy is the dominant ground cover and encroaching on the crown of some trees.								



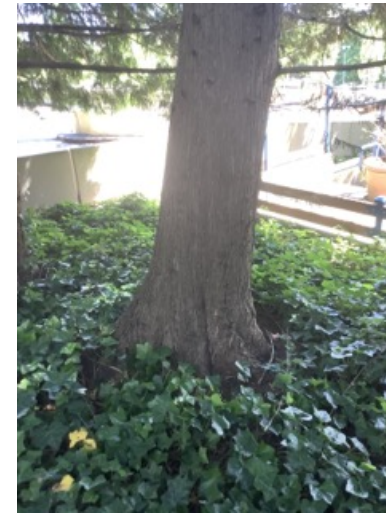
Tree Assessment Matrix

Tree	Species	DBH (in)	Drip Rad.	CRZ (ft)	Vigor	Structure	Risk	Pres Value	Recommendations
218	Western red cedar <i>Thuja plicata</i>	19.4	12.0	19.4	Good	Fair to Good	Low	Medium	
Notes/ Defects	This is the largest tree in the group.								



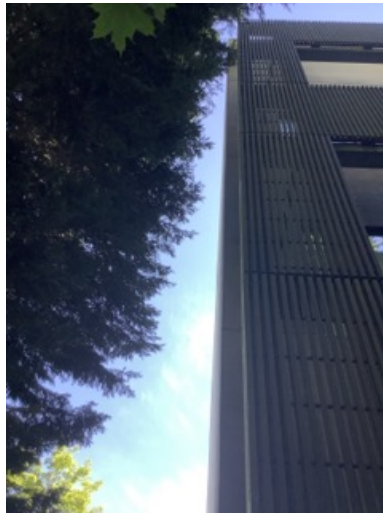
Tree Assessment Matrix

Tree	Species	DBH (in)	Drip Rad.	CRZ (ft)	Vigor	Structure	Risk	Pres Value	Recommendations
219	Western red cedar <i>Thuja plicata</i>	19.2	11.0	19.2	Good	Fair to Good	Low	Medium	
Notes/ Defects	The tree has a slight lean east.								



Tree Assessment Matrix

Tree	Species	DBH (in)	Drip Rad.	CRZ (ft)	Vigor	Structure	Risk	Pres Value	Recommendations
220	Western red cedar <i>Thuja plicata</i>	19.5	11.0	19.5	Good	Fair to Good	Low	Medium	
Notes/ Defects	The crown is starting to encroach on the building wall.								



Tree Assessment Matrix

Tree	Species	DBH (in)	Drip Rad.	CRZ (ft)	Vigor	Structure	Risk	Pres Value	Recommendations
221	Western red cedar <i>Thuja plicata</i>	9.1	8.0	9.1	Good	Fair to Good	Low	Low	
Notes/ Defects	This is a healthy small tree.								



Tree Assessment Matrix

Tree	Species	DBH (in)	Drip Rad.	CRZ (ft)	Vigor	Structure	Risk	Pres Value	Recommendations
222	Douglas fir <i>Pseudotsuga menziesii</i>	11.8	6.0	11.8	Poor	Poor	Low	Low	
Notes/ Defects	The crown has very few branches and there is a new leader at the top.								



Tree Assessment Matrix

Tree	Species	DBH (in)	Drip Rad.	CRZ (ft)	Vigor	Structure	Risk	Pres Value	Recommendations
223	Douglas fir <i>Pseudotsuga menziesii</i>	19.5	13.0	19.5	Fair	Fair	Low	Medium	
Notes/ Defects	The lower crown is being choked out by ivy.								



Tree Assessment Matrix

Tree	Species	DBH (in)	Drip Rad.	CRZ (ft)	Vigor	Structure	Risk	Pres Value	Recommendations
224	Western red cedar <i>Thuja plicata</i>	25.4	11.0	25.4	Fair	Fair to Good	Low	Medium	
Notes/ Defects	There is ivy throughout the crown and the top is thinning.								



Tree Assessment Matrix

Tree	Species	DBH (in)	Drip Rad.	CRZ (ft)	Vigor	Structure	Risk	Pres Value	Recommendations
225	Red alder <i>Alnus rubra</i>	9.0	9.0	9.0	Fair	Fair	Low	Low	
Notes/ Defects	The tree has poor taper and ivy is choking out the lower crown.								



Tree Assessment Matrix

Tree	Species	DBH (in)	Drip Rad.	CRZ (ft)	Vigor	Structure	Risk	Pres Value	Recommendations
226	Red alder <i>Alnus rubra</i>	8.5	8.0	8.5	Fair to Good	Fair	Low	Low	
Notes/ Defects	The tree is leaning towards the building and the lower crown is choked out by ivy.								



Tree Assessment Matrix

Tree	Species	DBH (in)	Drip Rad.	CRZ (ft)	Vigor	Structure	Risk	Pres Value	Recommendations
227	Scouler's willow <i>Salix scouleriana</i>	18.0	7.0	18.0	Poor to Fair	Fair	Low	Low	
Notes/ Defects	The crown is choked out by ivy and there are some dead stems and decay in the trunk.								



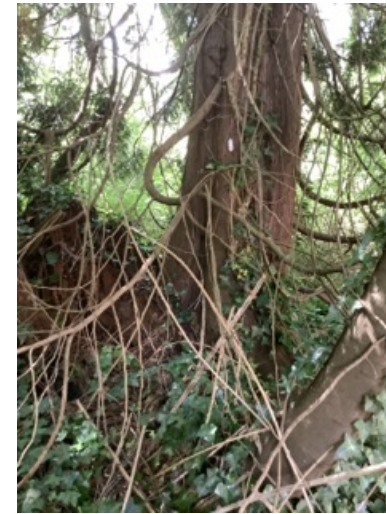
Tree Assessment Matrix

Tree	Species	DBH (in)	Drip Rad.	CRZ (ft)	Vigor	Structure	Risk	Pres Value	Recommendations
228	Red alder <i>Alnus rubra</i>	8.0	9.0	8.0	Fair to Good	Poor to Fair	Low	Low	
Notes/ Defects	The tree has a slight lean towards the building. It has ivy on the trunk.								



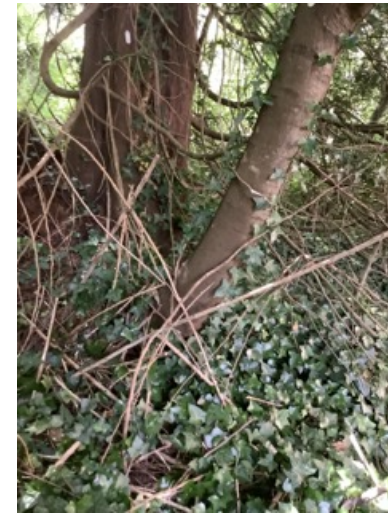
Tree Assessment Matrix

Tree	Species	DBH (in)	Drip Rad.	CRZ (ft)	Vigor	Structure	Risk	Pres Value	Recommendations
229	Western red cedar <i>Thuja plicata</i>	28.0	17.0	28.0	Poor	Good	Low	Medium	
Notes/ Defects	Ivy is choking out the crown and the top is thinning. The trunk has good taper and the tree is stable.								



Tree Assessment Matrix

Tree	Species	DBH (in)	Drip Rad.	CRZ (ft)	Vigor	Structure	Risk	Pres Value	Recommendations
230	Bigleaf maple <i>Acer macrophyllum</i>	7.8	13.5	7.8	Good	Poor to Fair	Low	Low	
Notes/ Defects	This is a short leaning tree.								



Tree Assessment Matrix

Tree	Species	DBH (in)	Drip Rad.	CRZ (ft)	Vigor	Structure	Risk	Pres Value	Recommendations
231	Red alder <i>Alnus rubra</i>	7.5	8.0	7.5	Good	Fair to Good	Low	Low	
Notes/ Defects	The tree is tall and thin with no visual structural defects.								

Tree Assessment Matrix

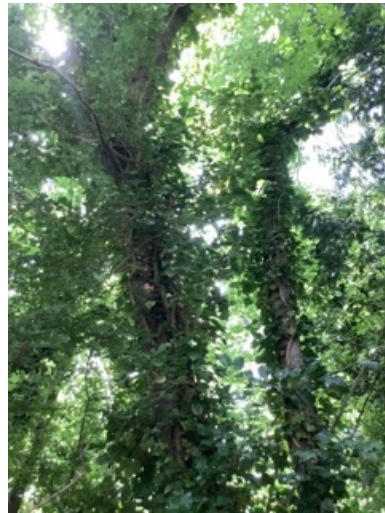
Tree	Species	DBH (in)	Drip Rad.	CRZ (ft)	Vigor	Structure	Risk	Pres Value	Recommendations
232	Red alder <i>Alnus rubra</i>	8.0	8.0	8.0	Fair	Fair to Good	Low	Low	
Notes/ Defects	Ivy is choking out the crown.								

Tree Assessment Matrix

Tree	Species	DBH (in)	Drip Rad.	CRZ (ft)	Vigor	Structure	Risk	Pres Value	Recommendations
233	Pacific madrone <i>Arbutus menziesii</i>	19.0	10.0	19.0	Dying/Dead	Dying/Dead	Low	Hazard or Dead	
Notes/ Defects	This is a tall tree with a straight trunk. There are other trees between it and the building that offer some protection in the case of failure.								

Tree Assessment Matrix

Tree	Species	DBH (in)	Drip Rad.	CRZ (ft)	Vigor	Structure	Risk	Pres Value	Recommendations
234	Red alder <i>Alnus rubra</i>		13.0	14.4	Fair	Fair to Good	Low	Low	
Notes/ Defects	Ivy is choking out the crown.								



Tree Assessment Matrix

Tree	Species	DBH (in)	Drip Rad.	CRZ (ft)	Vigor	Structure	Risk	Pres Value	Recommendations
235	Red alder <i>Alnus rubra</i>	8.5	7.0	8.5	Fair	Fair	Low	Low	
Notes/ Defects	The tree is tall and thin with a slight lean. Ivy is encroaching on the crown.								

Tree Assessment Matrix

Tree	Species	DBH (in)	Drip Rad.	CRZ (ft)	Vigor	Structure	Risk	Pres Value	Recommendations
236	Pacific madrone <i>Arbutus menziesii</i>	14.0	10.0	14.0	Poor to Fair	Fair to Good	Low	Medium	
Notes/ Defects	The tree is in decline. It is leaning away from the building and not likely to strike any target.								



Tree Assessment Matrix

Tree	Species	DBH (in)	Drip Rad.	CRZ (ft)	Vigor	Structure	Risk	Pres Value	Recommendations
237	Scouler's willow <i>Salix scouleriana</i>	9.5	7.0	9.5	Fair	Poor to Fair	Low	Low	
Notes/ Defects	The tree has a broken top with new leaders.								



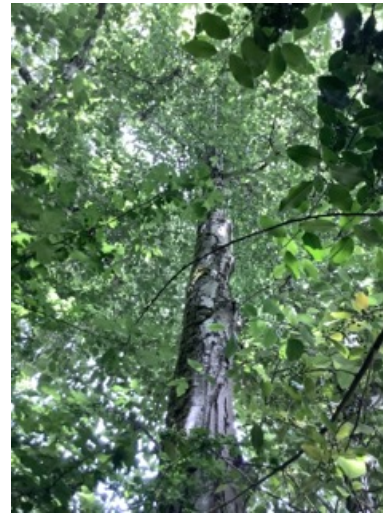
Tree Assessment Matrix

Tree	Species	DBH (in)	Drip Rad.	CRZ (ft)	Vigor	Structure	Risk	Pres Value	Recommendations
238	Red alder <i>Alnus rubra</i>	18.0	18.0	18.0	Good	Fair to Good	Low	Low	
Notes/ Defects	This is a healthy tree in good condition.								



Tree Assessment Matrix

Tree	Species	DBH (in)	Drip Rad.	CRZ (ft)	Vigor	Structure	Risk	Pres Value	Recommendations
239	Red alder <i>Alnus rubra</i>	16.5	17.0	16.5	Good	Fair	Low	Low	
Notes/ Defects	The tree has a single trunk with a nice shape.								



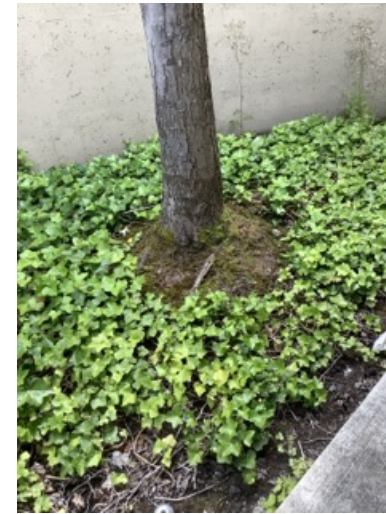
Tree Assessment Matrix

Tree	Species	DBH (in)	Drip Rad.	CRZ (ft)	Vigor	Structure	Risk	Pres Value	Recommendations
240	Red alder <i>Alnus rubra</i>	9.0	10.0	9.0	Fair	Poor to Fair	Low	Low	
Notes/ Defects	This is a small leaning tree.								



Tree Assessment Matrix

Tree	Species	DBH (in)	Drip Rad.	CRZ (ft)	Vigor	Structure	Risk	Pres Value	Recommendations
241	Armstrong maple <i>Acer x freemanii</i> 'Armstrong'	9.2	6.0	9.2	Fair to Good	Good	Low	Low	
Notes/ Defects	This is the primary tree species in the planting area of the parking lot. Each planting strip row is an almost continuous line from one end of the parking area to the other.								



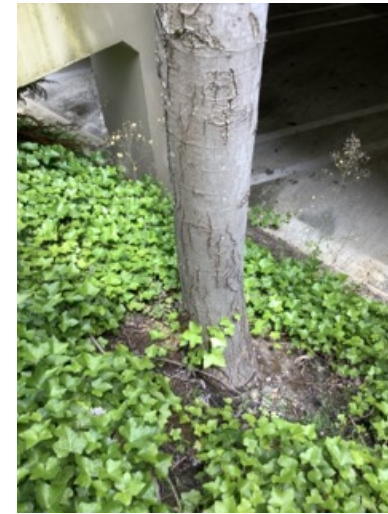
Tree Assessment Matrix

Tree	Species	DBH (in)	Drip Rad.	CRZ (ft)	Vigor	Structure	Risk	Pres Value	Recommendations
242	Armstrong maple <i>Acer x freemanii</i> 'Armstrong'	7.2	6.0	7.2	Fair to Good	Good	Low	Low	
Notes/ Defects	There is some dieback in the crown. The irrigation system is operating.								



Tree Assessment Matrix

Tree	Species	DBH (in)	Drip Rad.	CRZ (ft)	Vigor	Structure	Risk	Pres Value	Recommendations
243	Armstrong maple <i>Acer x freemanii</i> 'Armstrong'	6.4	5.0	6.4	Fair to Good	Good	Low	Low	
Notes/ Defects	The tree has a full length crown.								



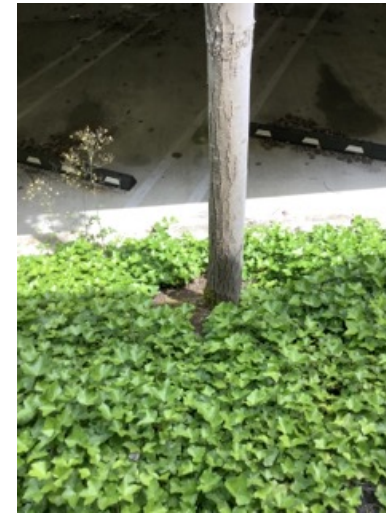
Tree Assessment Matrix

Tree	Species	DBH (in)	Drip Rad.	CRZ (ft)	Vigor	Structure	Risk	Pres Value	Recommendations
244	Armstrong maple <i>Acer x freemanii</i> 'Armstrong'	5.6	5.0	5.6	Fair	Good	Low	Low	
Notes/ Defects	The tree has a weak crown with some dieback.								



Tree Assessment Matrix

Tree	Species	DBH (in)	Drip Rad.	CRZ (ft)	Vigor	Structure	Risk	Pres Value	Recommendations
245	Armstrong maple <i>Acer x freemanii</i> 'Armstrong'	6.4	5.0	6.4	Fair to Good	Good	Low	Low	
Notes/ Defects	There is some minor dieback in the lower crown.								



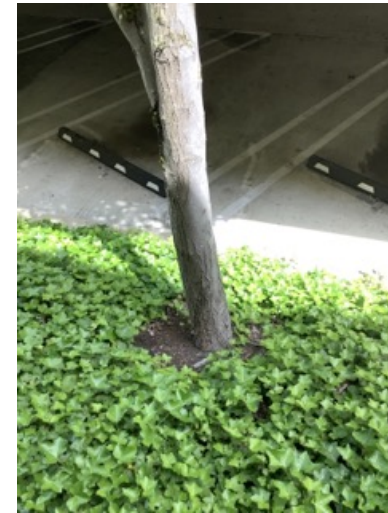
Tree Assessment Matrix

Tree	Species	DBH (in)	Drip Rad.	CRZ (ft)	Vigor	Structure	Risk	Pres Value	Recommendations
246	Armstrong maple <i>Acer x freemanii</i> 'Armstrong'	6.3	5.0	6.3	Fair	Fair	Low	Low	
Notes/ Defects	One of the codominant stems is dead.								



Tree Assessment Matrix

Tree	Species	DBH (in)	Drip Rad.	CRZ (ft)	Vigor	Structure	Risk	Pres Value	Recommendations
247	Armstrong maple <i>Acer x freemanii</i> 'Armstrong'		5.0	6.9	Good	Good	Low	Low	
Notes/ Defects	The tree has a full length and healthy crown.								



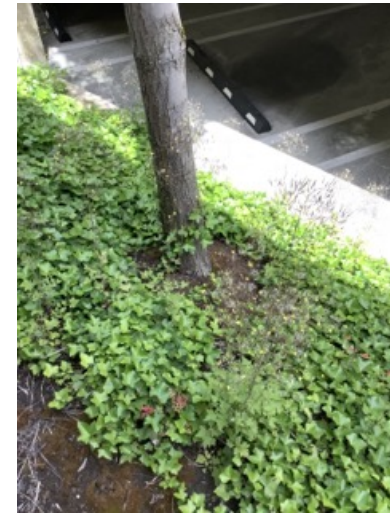
Tree Assessment Matrix

Tree	Species	DBH (in)	Drip Rad.	CRZ (ft)	Vigor	Structure	Risk	Pres Value	Recommendations
248	Armstrong maple <i>Acer x freemanii</i> 'Armstrong'	8.8	5.0	8.8	Good	Good	Low	Low	
Notes/ Defects	The tree has a full length and healthy crown.								



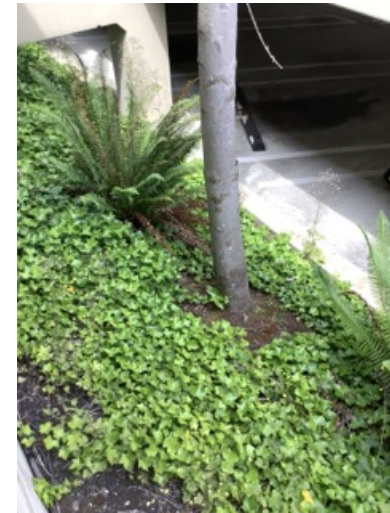
Tree Assessment Matrix

Tree	Species	DBH (in)	Drip Rad.	CRZ (ft)	Vigor	Structure	Risk	Pres Value	Recommendations
249	Armstrong maple <i>Acer x freemanii</i> 'Armstrong'	6.5	5.0	6.5	Fair to Good	Good	Low	Low	
Notes/ Defects	The tree has a full length and healthy crown.								



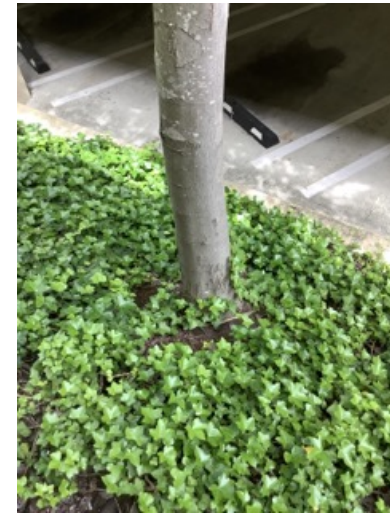
Tree Assessment Matrix

Tree	Species	DBH (in)	Drip Rad.	CRZ (ft)	Vigor	Structure	Risk	Pres Value	Recommendations
250	Armstrong maple <i>Acer x freemanii</i> 'Armstrong'	6.2	5.0	6.2	Poor to Fair	Good	Low	Low	
Notes/ Defects	The tree has a weak crown with some dieback.								



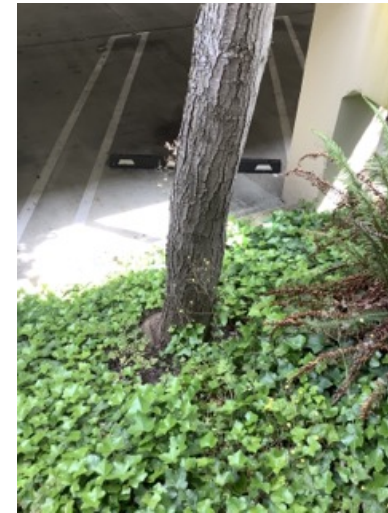
Tree Assessment Matrix

Tree	Species	DBH (in)	Drip Rad.	CRZ (ft)	Vigor	Structure	Risk	Pres Value	Recommendations
251	Armstrong maple <i>Acer x freemanii</i> 'Armstrong'	8.0	5.0	8.0	Good	Good	Low	Low	
Notes/ Defects	The crown is broad instead of columnar. It is healthy and in good condition.								



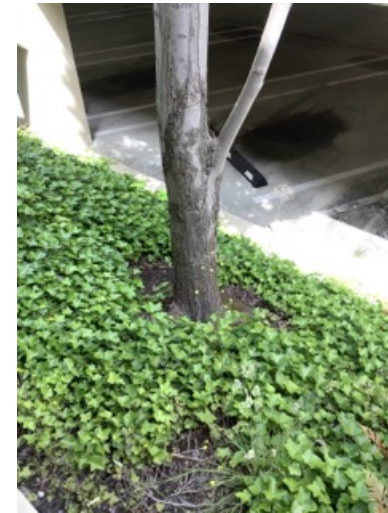
Tree Assessment Matrix

Tree	Species	DBH (in)	Drip Rad.	CRZ (ft)	Vigor	Structure	Risk	Pres Value	Recommendations
252	Armstrong maple <i>Acer x freemanii</i> 'Armstrong'	10.0	5.0	10.0	Good	Good	Low	Low	
Notes/ Defects	The tree has a full length crown in good condition.								



Tree Assessment Matrix

Tree	Species	DBH (in)	Drip Rad.	CRZ (ft)	Vigor	Structure	Risk	Pres Value	Recommendations
253	Armstrong maple <i>Acer x freemanii</i> 'Armstrong'	7.9	5.0	7.9	Good	Good	Low	Low	
Notes/ Defects	This is a tall tree with a full crown.								



Tree Assessment Matrix

Tree	Species	DBH (in)	Drip Rad.	CRZ (ft)	Vigor	Structure	Risk	Pres Value	Recommendations
254	Armstrong maple <i>Acer x freemanii</i> 'Armstrong'	7.2	5.0	7.2	Fair to Good	Good	Low	Low	
Notes/ Defects	The tree is healthy and in good condition.								



Tree Assessment Matrix

Tree	Species	DBH (in)	Drip Rad.	CRZ (ft)	Vigor	Structure	Risk	Pres Value	Recommendations
255	Armstrong maple <i>Acer x freemanii</i> 'Armstrong'		5.0	7.9	Fair to Good	Good	Low	Low	
Notes/ Defects	The crown has some minor dieback.								



Tree Assessment Matrix

Tree	Species	DBH (in)	Drip Rad.	CRZ (ft)	Vigor	Structure	Risk	Pres Value	Recommendations
256	Armstrong maple <i>Acer x freemanii</i> 'Armstrong'	6.1	5.0	6.1	Fair to Good	Good	Low	Low	
Notes/ Defects	There is some minor dieback in the crown.								



Tree Assessment Matrix

Tree	Species	DBH (in)	Drip Rad.	CRZ (ft)	Vigor	Structure	Risk	Pres Value	Recommendations
257	Armstrong maple <i>Acer x freemanii</i> 'Armstrong'	7.3	5.0	7.3	Good	Good	Low	Low	
Notes/ Defects	A tall tree with a healthy crown.								



Tree Assessment Matrix

Tree	Species	DBH (in)	Drip Rad.	CRZ (ft)	Vigor	Structure	Risk	Pres Value	Recommendations
258	Armstrong maple <i>Acer x freemanii</i> 'Armstrong'	6.3	5.0	6.3	Good	Good	Low	Low	
Notes/ Defects	The crown is weak with some dieback.								



Tree Assessment Matrix

Tree	Species	DBH (in)	Drip Rad.	CRZ (ft)	Vigor	Structure	Risk	Pres Value	Recommendations
259	Armstrong maple <i>Acer x freemanii</i> 'Armstrong'	6.3	5.0	6.3	Fair to Good	Good	Low	Low	
Notes/ Defects	The tree has some minor dieback in the crown.								



Tree Assessment Matrix

Tree	Species	DBH (in)	Drip Rad.	CRZ (ft)	Vigor	Structure	Risk	Pres Value	Recommendations
260	Armstrong maple <i>Acer x freemanii</i> 'Armstrong'	7.0	5.0	7.0	Fair to Good	Good	Low	Low	
Notes/ Defects	There is some minor dieback in the crown.								



Tree Assessment Matrix

Tree	Species	DBH (in)	Drip Rad.	CRZ (ft)	Vigor	Structure	Risk	Pres Value	Recommendations
261	Armstrong maple <i>Acer x freemanii</i> 'Armstrong'	5.1	5.0	5.1	Poor to Fair	Good	Low	Low	
Notes/ Defects	The tree has a small crown with minor dieback.								



Tree Assessment Matrix

Tree	Species	DBH (in)	Drip Rad.	CRZ (ft)	Vigor	Structure	Risk	Pres Value	Recommendations
262	Armstrong maple <i>Acer x freemanii</i> 'Armstrong'	7.2	5.0	7.2	Poor to Fair	Good	Low	Low	
Notes/ Defects	The tree has a small crown with minor dieback.								



Tree Assessment Matrix

Tree	Species	DBH (in)	Drip Rad.	CRZ (ft)	Vigor	Structure	Risk	Pres Value	Recommendations
263	Armstrong maple <i>Acer x freemanii</i> 'Armstrong'	12.4	13.0	12.4	Good	Fair to Good	Low	Low	
Notes/ Defects	There are large surface roots and the crown has been trained to grow away from the parking garage wall.								



Tree Assessment Matrix

Tree	Species	DBH (in)	Drip Rad.	CRZ (ft)	Vigor	Structure	Risk	Pres Value	Recommendations
264	Armstrong maple <i>Acer x freemanii</i> 'Armstrong'	10.8	9.5	10.8	Good	Fair to Good	Low	Low	
Notes/ Defects	This is a healthy tree with a broad crown.								



Tree Assessment Matrix

Tree	Species	DBH (in)	Drip Rad.	CRZ (ft)	Vigor	Structure	Risk	Pres Value	Recommendations
265	Armstrong maple <i>Acer x freemanii</i> 'Armstrong'	10.1	5.0	10.1	Good	Good	Low	Low	
Notes/ Defects	This is a healthy tree with a full crown.								



Tree Assessment Matrix

Tree	Species	DBH (in)	Drip Rad.	CRZ (ft)	Vigor	Structure	Risk	Pres Value	Recommendations
266	Armstrong maple <i>Acer x freemanii</i> 'Armstrong'	10.2	5.0	10.2	Fair to Good	Good	Low	Low	
Notes/ Defects	This is a healthy tree.								



Tree Assessment Matrix

Tree	Species	DBH (in)	Drip Rad.	CRZ (ft)	Vigor	Structure	Risk	Pres Value	Recommendations
267	Armstrong maple <i>Acer x freemanii</i> 'Armstrong'	6.9	5.0	6.9	Fair to Good	Good	Low	Low	
Notes/ Defects	There is some minor dieback in the crown.								



Tree Assessment Matrix

Tree	Species	DBH (in)	Drip Rad.	CRZ (ft)	Vigor	Structure	Risk	Pres Value	Recommendations
268	Armstrong maple <i>Acer x freemanii</i> 'Armstrong'	5.5	5.0	5.5	Poor	Poor	Low	Low	
Notes/ Defects	The crown has low branching density and major dieback.								



Tree Assessment Matrix

Tree	Species	DBH (in)	Drip Rad.	CRZ (ft)	Vigor	Structure	Risk	Pres Value	Recommendations
269	Armstrong maple <i>Acer x freemanii</i> 'Armstrong'	7.3	5.0	7.3	Fair	Fair to Good	Low	Low	
Notes/ Defects	There is minor dieback in the crown.								



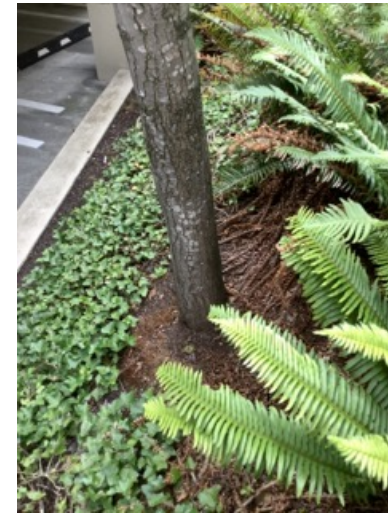
Tree Assessment Matrix

Tree	Species	DBH (in)	Drip Rad.	CRZ (ft)	Vigor	Structure	Risk	Pres Value	Recommendations
270	Armstrong maple <i>Acer x freemanii</i> 'Armstrong'	6.0	5.0	6.0	Fair	Fair to Good	Low	Low	
Notes/ Defects	There is minor dieback in the crown.								



Tree Assessment Matrix

Tree	Species	DBH (in)	Drip Rad.	CRZ (ft)	Vigor	Structure	Risk	Pres Value	Recommendations
271	Armstrong maple <i>Acer x freemanii</i> 'Armstrong'	6.3	5.0	6.3	Fair	Fair to Good	Low	Low	
Notes/ Defects	There is minor dieback in the crown.								



Tree Assessment Matrix

Tree	Species	DBH (in)	Drip Rad.	CRZ (ft)	Vigor	Structure	Risk	Pres Value	Recommendations
272	Armstrong maple <i>Acer x freemanii</i> 'Armstrong'	6.8	5.0	6.8	Fair	Fair to Good	Low	Low	
Notes/ Defects	There is minor dieback in the crown.								



Tree Assessment Matrix

Tree	Species	DBH (in)	Drip Rad.	CRZ (ft)	Vigor	Structure	Risk	Pres Value	Recommendations
273	Armstrong maple <i>Acer x freemanii</i> 'Armstrong'	8.0	5.0	8.0	Fair to Good	Fair to Good	Low	Low	
Notes/ Defects	There is minor dieback in the crown.								



Tree Assessment Matrix

Tree	Species	DBH (in)	Drip Rad.	CRZ (ft)	Vigor	Structure	Risk	Pres Value	Recommendations
274	Armstrong maple <i>Acer x freemanii</i> 'Armstrong'	7.3	5.0	7.3	Fair to Good	Fair to Good	Low	Low	
Notes/ Defects	There is minor dieback in the crown.								



Tree Assessment Matrix

Tree	Species	DBH (in)	Drip Rad.	CRZ (ft)	Vigor	Structure	Risk	Pres Value	Recommendations
275	Armstrong maple <i>Acer x freemanii</i> 'Armstrong'	8.6	5.0	8.6	Fair to Good	Fair to Good	Low	Low	
Notes/ Defects	There is minor dieback in the crown.								



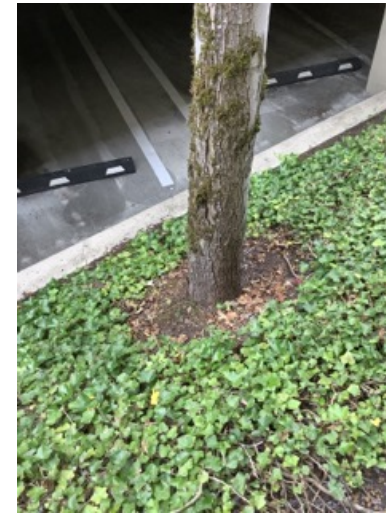
Tree Assessment Matrix

Tree	Species	DBH (in)	Drip Rad.	CRZ (ft)	Vigor	Structure	Risk	Pres Value	Recommendations
276	Armstrong maple <i>Acer x freemanii</i> 'Armstrong'	4.9	5.0	4.9	Poor	Poor	Low	Low	
Notes/ Defects	The crown has low branching density.								



Tree Assessment Matrix

Tree	Species	DBH (in)	Drip Rad.	CRZ (ft)	Vigor	Structure	Risk	Pres Value	Recommendations
277	Armstrong maple <i>Acer x freemanii</i> 'Armstrong'	9.6	5.0	9.6	Good	Good	Low	Low	
Notes/ Defects	This is a large healthy tree.								



Tree Assessment Matrix

Tree	Species	DBH (in)	Drip Rad.	CRZ (ft)	Vigor	Structure	Risk	Pres Value	Recommendations
278	Armstrong maple <i>Acer x freemanii</i> 'Armstrong'	8.9	5.0	8.9	Good	Good	Low	Low	
Notes/ Defects	The form is broad and short instead of the typical columnar shape.								



Tree Assessment Matrix

Tree	Species	DBH (in)	Drip Rad.	CRZ (ft)	Vigor	Structure	Risk	Pres Value	Recommendations
279	Armstrong maple <i>Acer x freemanii</i> 'Armstrong'	5.2	5.0	5.2	Poor	Poor	Low	Low	
Notes/ Defects	The tree has a weak crown and it is leaning slightly.								



Tree Assessment Matrix

Tree	Species	DBH (in)	Drip Rad.	CRZ (ft)	Vigor	Structure	Risk	Pres Value	Recommendations
280	Armstrong maple <i>Acer x freemanii</i> 'Armstrong'	4.8	5.0	4.8	Fair to Good	Fair to Good	Low	Low	
Notes/ Defects	This is a shorter and broader crown the typical for the cultivar.								



Tree Assessment Matrix

Tree	Species	DBH (in)	Drip Rad.	CRZ (ft)	Vigor	Structure	Risk	Pres Value	Recommendations
281	Armstrong maple <i>Acer x freemanii</i> 'Armstrong'	9.8	5.0	9.8	Poor to Fair	Fair to Good	Low	Low	
Notes/ Defects	This is a small tree with some minor dieback.								



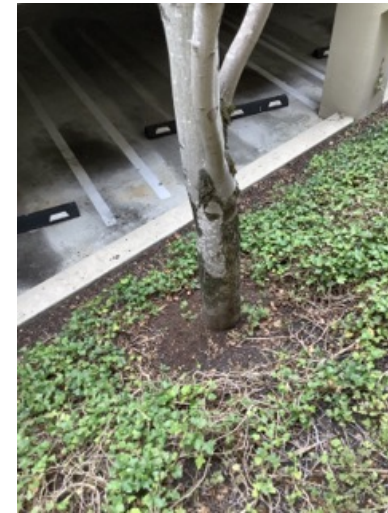
Tree Assessment Matrix

Tree	Species	DBH (in)	Drip Rad.	CRZ (ft)	Vigor	Structure	Risk	Pres Value	Recommendations
282	Armstrong maple <i>Acer x freemanii</i> 'Armstrong'		5.0	15.0	Good	Fair to Good	Low	Low	
Notes/ Defects	This tree has multiple codominant stems.								



Tree Assessment Matrix

Tree	Species	DBH (in)	Drip Rad.	CRZ (ft)	Vigor	Structure	Risk	Pres Value	Recommendations
283	Armstrong maple <i>Acer x freemanii</i> 'Armstrong'	6.8	5.0	6.8	Poor	Fair	Low	Low	
Notes/ Defects	The crown is weak with some dieback.								



Tree Assessment Matrix

Tree	Species	DBH (in)	Drip Rad.	CRZ (ft)	Vigor	Structure	Risk	Pres Value	Recommendations
284	Armstrong maple <i>Acer x freemanii</i> 'Armstrong'	8.5	5.0	8.5	Fair to Good	Fair to Good	Low	Low	
Notes/ Defects	The crown is broad instead of columnar.								



Tree Assessment Matrix

Tree	Species	DBH (in)	Drip Rad.	CRZ (ft)	Vigor	Structure	Risk	Pres Value	Recommendations
285	Armstrong maple <i>Acer x freemanii</i> 'Armstrong'	7.4	5.0	7.4	Fair	Fair to Good	Low	Low	
Notes/ Defects	There is some branch dieback in the crown.								



Tree Assessment Matrix

Tree	Species	DBH (in)	Drip Rad.	CRZ (ft)	Vigor	Structure	Risk	Pres Value	Recommendations
286	Armstrong maple <i>Acer x freemanii</i> 'Armstrong'	9.0	5.0	9.0	Fair	Fair to Good	Low	Low	
Notes/ Defects	The crown has minor branch dieback.								



Tree Assessment Matrix

Tree	Species	DBH (in)	Drip Rad.	CRZ (ft)	Vigor	Structure	Risk	Pres Value	Recommendations
287	Armstrong maple <i>Acer x freemanii</i> 'Armstrong'	8.0	5.0	8.0	Fair	Fair to Good	Low	Low	
Notes/ Defects	There is minor dieback in the crown.								



Tree Assessment Matrix

Tree	Species	DBH (in)	Drip Rad.	CRZ (ft)	Vigor	Structure	Risk	Pres Value	Recommendations
288	Armstrong maple <i>Acer x freemanii</i> 'Armstrong'	8.5	5.0	8.5	Good	Fair to Good	Low	Low	
Notes/ Defects	This is a tall healthy tree.								



Tree Assessment Matrix

Tree	Species	DBH (in)	Drip Rad.	CRZ (ft)	Vigor	Structure	Risk	Pres Value	Recommendations
289	Armstrong maple <i>Acer x freemanii</i> 'Armstrong'	11.2	5.0	11.2	Good	Fair to Good	Low	Low	
Notes/ Defects	The crown if healthy and there is included bark between two codominant stems.								



Tree Assessment Matrix

Tree	Species	DBH (in)	Drip Rad.	CRZ (ft)	Vigor	Structure	Risk	Pres Value	Recommendations
290	Armstrong maple <i>Acer x freemanii</i> 'Armstrong'	6.5	5.0	6.5	Poor to Fair	Fair	Low	Low	
Notes/ Defects	There is minor dieback in the crown.								



Tree Assessment Matrix

Tree	Species	DBH (in)	Drip Rad.	CRZ (ft)	Vigor	Structure	Risk	Pres Value	Recommendations
291	Armstrong maple <i>Acer x freemanii</i> 'Armstrong'	8.0	5.0	8.0	Fair to Good	Fair to Good	Low	Low	
Notes/ Defects	This is a shorter tree.								



Tree Assessment Matrix

Tree	Species	DBH (in)	Drip Rad.	CRZ (ft)	Vigor	Structure	Risk	Pres Value	Recommendations
292	Armstrong maple <i>Acer x freemanii</i> 'Armstrong'	8.0	5.0	8.0	Fair to Good	Fair to Good	Low	Low	
Notes/ Defects	The tree has minor dieback in the crown.								



Tree Assessment Matrix

Tree	Species	DBH (in)	Drip Rad.	CRZ (ft)	Vigor	Structure	Risk	Pres Value	Recommendations
293	Armstrong maple <i>Acer x freemanii</i> 'Armstrong'	8.5	5.0	8.5	Fair to Good	Fair to Good	Low	Low	
Notes/ Defects	This is a healthy tree in good condition.								



Tree Assessment Matrix

Urban Forestry Services | Bartlett Consulting
15119 McLean Road
Mount Vernon, WA 98273

Tree	Species	DBH (in)	Drip Rad.	CRZ (ft)	Vigor	Structure	Risk	Pres Value	Recommendations
294	Armstrong maple <i>Acer x freemanii</i> 'Armstrong'	8.9	5.0	8.9	Fair to Good	Fair to Good	Low	Low	
Notes/ Defects	This is a healthy tree in good condition.								



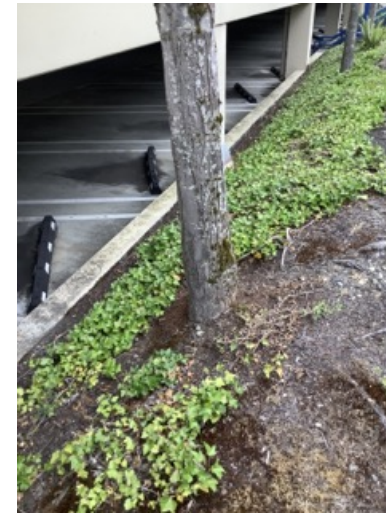
Tree Assessment Matrix

Tree	Species	DBH (in)	Drip Rad.	CRZ (ft)	Vigor	Structure	Risk	Pres Value	Recommendations
295	Armstrong maple <i>Acer x freemanii</i> 'Armstrong'	10.7	5.0	10.7	Fair to Good	Fair to Good	Low	Low	
Notes/ Defects	The tree is healthy. There is one circling root around the root flare.								



Tree Assessment Matrix

Tree	Species	DBH (in)	Drip Rad.	CRZ (ft)	Vigor	Structure	Risk	Pres Value	Recommendations
296	Armstrong maple <i>Acer x freemanii</i> 'Armstrong'	8.9	5.0	8.9	Fair to Good	Fair to Good	Low	Low	
Notes/ Defects	There is minor dieback in the crown.								



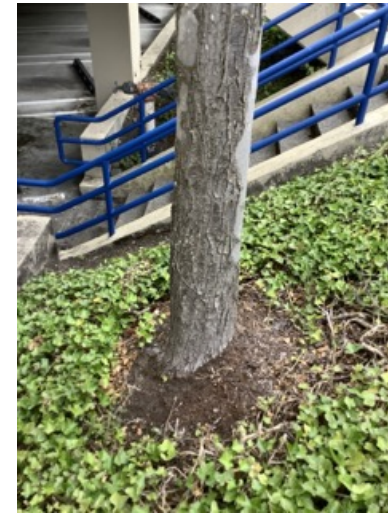
Tree Assessment Matrix

Tree	Species	DBH (in)	Drip Rad.	CRZ (ft)	Vigor	Structure	Risk	Pres Value	Recommendations
297	Armstrong maple <i>Acer x freemanii</i> 'Armstrong'	6.3	5.0	6.3	Fair	Fair	Low	Low	
Notes/ Defects	The spreading crown is slightly asymmetrical.								



Tree Assessment Matrix

Tree	Species	DBH (in)	Drip Rad.	CRZ (ft)	Vigor	Structure	Risk	Pres Value	Recommendations
298	Armstrong maple <i>Acer x freemanii</i> 'Armstrong'	7.8	5.0	7.8	Fair	Fair	Low	Low	
Notes/ Defects	There is minor dieback in the crown.								



Tree Assessment Matrix

Tree	Species	DBH (in)	Drip Rad.	CRZ (ft)	Vigor	Structure	Risk	Pres Value	Recommendations
299	Armstrong maple <i>Acer x freemanii</i> 'Armstrong'	9.7	5.0	9.7	Fair	Fair	Low	Low	
Notes/ Defects	The tree has a spreading crown.								



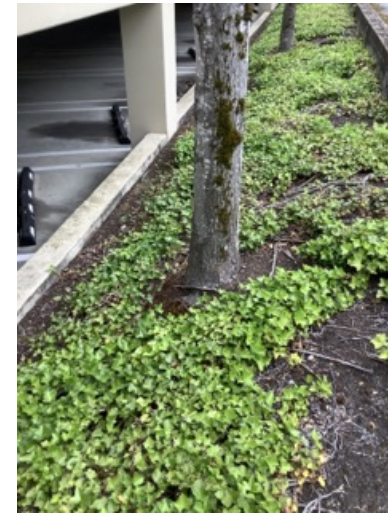
Tree Assessment Matrix

Tree	Species	DBH (in)	Drip Rad.	CRZ (ft)	Vigor	Structure	Risk	Pres Value	Recommendations
300	Armstrong maple <i>Acer x freemanii</i> 'Armstrong'	8.9	5.0	8.9	Fair	Fair	Low	Low	
Notes/ Defects	The tree has codominant stems and some dieback in the crown.								



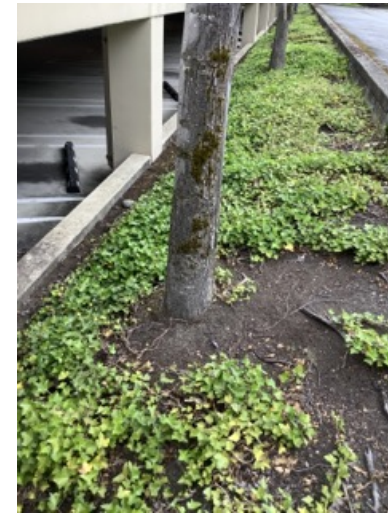
Tree Assessment Matrix

Tree	Species	DBH (in)	Drip Rad.	CRZ (ft)	Vigor	Structure	Risk	Pres Value	Recommendations
301	Armstrong maple <i>Acer x freemanii</i> 'Armstrong'	10.0	5.0	10.0	Good	Fair to Good	Low	Low	
Notes/ Defects	This is a healthy tree in good condition.								



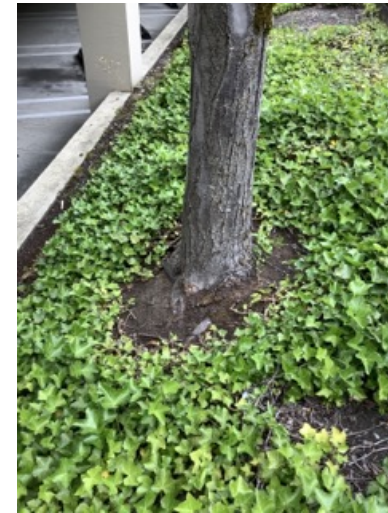
Tree Assessment Matrix

Tree	Species	DBH (in)	Drip Rad.	CRZ (ft)	Vigor	Structure	Risk	Pres Value	Recommendations
302	Armstrong maple <i>Acer x freemanii</i> 'Armstrong'	8.8	5.0	8.8	Good	Good	Low	Low	
Notes/ Defects	This is a healthy tree in good condition.								



Tree Assessment Matrix

Tree	Species	DBH (in)	Drip Rad.	CRZ (ft)	Vigor	Structure	Risk	Pres Value	Recommendations
303	Armstrong maple <i>Acer x freemanii</i> 'Armstrong'		5.0	9.8	Fair to Good	Good	Low	Low	
Notes/ Defects	This is a healthy tree in good condition.								



Tree Assessment Matrix

Tree	Species	DBH (in)	Drip Rad.	CRZ (ft)	Vigor	Structure	Risk	Pres Value	Recommendations
304	Armstrong maple <i>Acer x freemanii</i> 'Armstrong'	7.8	5.0	7.8	Good	Fair	Low	Low	
Notes/ Defects	This is a smaller tree in good condition.								



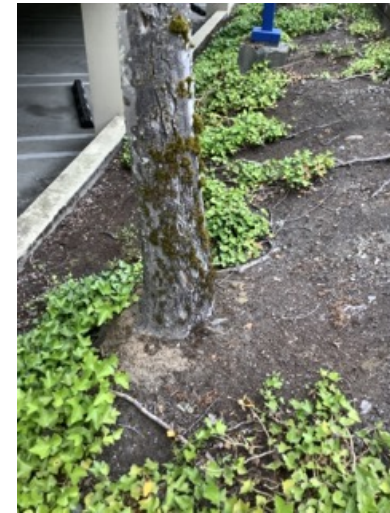
Tree Assessment Matrix

Tree	Species	DBH (in)	Drip Rad.	CRZ (ft)	Vigor	Structure	Risk	Pres Value	Recommendations
305	Armstrong maple <i>Acer x freemanii</i> 'Armstrong'	10.8	5.0	10.8	Good	Good	Low	Low	
Notes/ Defects	This is a healthy tree with a full crown.								



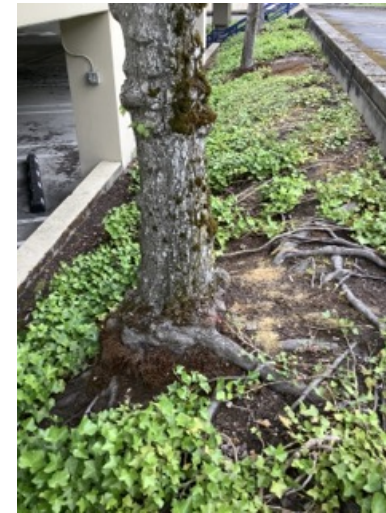
Tree Assessment Matrix

Tree	Species	DBH (in)	Drip Rad.	CRZ (ft)	Vigor	Structure	Risk	Pres Value	Recommendations
306	Armstrong maple <i>Acer x freemanii</i> 'Armstrong'	9.3	5.0	9.3	Fair	Fair to Good	Low	Low	
Notes/ Defects	Some dieback, old wounds at base of trunk								



Tree Assessment Matrix

Tree	Species	DBH (in)	Drip Rad.	CRZ (ft)	Vigor	Structure	Risk	Pres Value	Recommendations
307	Armstrong maple <i>Acer x freemanii</i> 'Armstrong'	10.1	5.0	10.1	Good	Fair	Low	Low	
Notes/ Defects	This tree has a spreading crown form.								



Tree Assessment Matrix

Tree	Species	DBH (in)	Drip Rad.	CRZ (ft)	Vigor	Structure	Risk	Pres Value	Recommendations
308	Armstrong maple <i>Acer x freemanii</i> 'Armstrong'	8.0	5.0	8.0	Fair	Fair	Low	Low	
Notes/ Defects	There is minor dieback in the crown.								



Tree Assessment Matrix

Tree	Species	DBH (in)	Drip Rad.	CRZ (ft)	Vigor	Structure	Risk	Pres Value	Recommendations
309	Armstrong maple <i>Acer x freemanii</i> 'Armstrong'	12.8	5.0	12.8	Good	Fair to Good	Low	Low	
Notes/ Defects	The crown is full length and healthy.								



Tree Assessment Matrix

Tree	Species	DBH (in)	Drip Rad.	CRZ (ft)	Vigor	Structure	Risk	Pres Value	Recommendations
310	Armstrong maple <i>Acer x freemanii</i> 'Armstrong'	9.4	5.0	9.4	Good	Fair to Good	Low	Low	
Notes/ Defects	The tree is in good condition.								



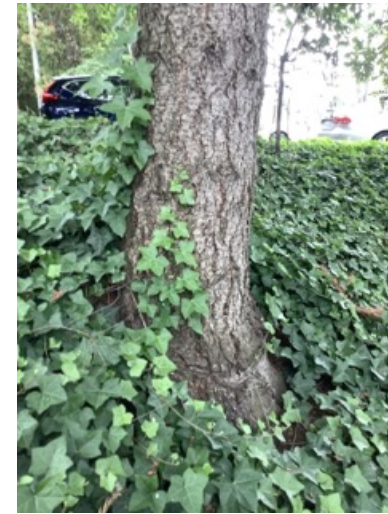
Tree Assessment Matrix

Tree	Species	DBH (in)	Drip Rad.	CRZ (ft)	Vigor	Structure	Risk	Pres Value	Recommendations
311	Armstrong maple <i>Acer x freemanii</i> 'Armstrong'	12.1	5.0	12.1	Good	Fair to Good	Low	Low	
Notes/ Defects	The tree is in good condition. It has multiple codominant stems.								



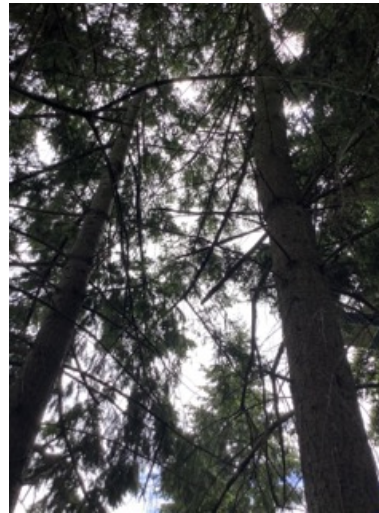
Tree Assessment Matrix

Tree	Species	DBH (in)	Drip Rad.	CRZ (ft)	Vigor	Structure	Risk	Pres Value	Recommendations
312	Douglas fir <i>Pseudotsuga menziesii</i>	17.2	12.0	17.2	Fair	Fair to Good	Low	Medium	
Notes/ Defects	This tree is in a grove of 11 trees, 4 of which are on the subject property. They are on a slight slope. Ivy is the dominant ground cover and starting up the trees.								



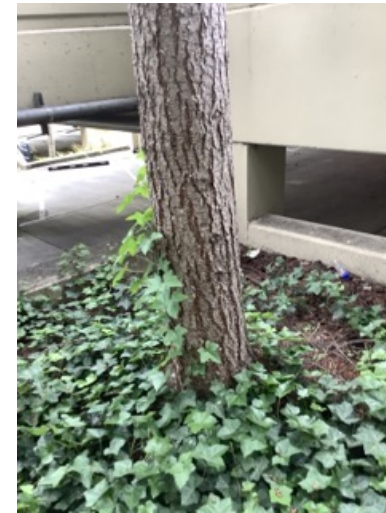
Tree Assessment Matrix

Tree	Species	DBH (in)	Drip Rad.	CRZ (ft)	Vigor	Structure	Risk	Pres Value	Recommendations
313	Douglas fir <i>Pseudotsuga menziesii</i>	11.5	6.8	11.5	Fair	Fair	Low	Low	
Notes/ Defects	The tree has a slight asymmetrical crown.								



Tree Assessment Matrix

Tree	Species	DBH (in)	Drip Rad.	CRZ (ft)	Vigor	Structure	Risk	Pres Value	Recommendations
314	Douglas fir <i>Pseudotsuga menziesii</i>	11.2	8.8	11.2	Fair to Good	Fair	Low	Low	
Notes/ Defects	The crown is asymmetrical over the parking area.								



Tree Assessment Matrix

Tree	Species	DBH (in)	Drip Rad.	CRZ (ft)	Vigor	Structure	Risk	Pres Value	Recommendations
315	Douglas fir <i>Pseudotsuga menziesii</i>	16.8	9.8	16.8	Fair to Good	Fair to Good	Low	Medium	
Notes/ Defects	Ivy is starting to encroach on the lower crown.								



Tree Assessment Matrix

Tree	Species	DBH (in)	Drip Rad.	CRZ (ft)	Vigor	Structure	Risk	Pres Value	Recommendations
316	Red maple <i>Acer rubrum</i>	14.5	13.0	14.5	Good	Fair to Good	Low	Medium	
Notes/ Defects	The tree has a nice shape and it is in good condition. The lower branches could be elevated over the sidewalk. There is an encircling root and some sidewalk upheaval next to the tree.								



Tree Assessment Matrix

Tree	Species	DBH (in)	Drip Rad.	CRZ (ft)	Vigor	Structure	Risk	Pres Value	Recommendations
317	Red maple <i>Acer rubrum</i>	9.8	11.0	9.8	Good	Good	Low	Low	
Notes/ Defects	This is a healthy tree in good condition. The lower branches over the sidewalk could be pruned.								



Tree Assessment Matrix

Tree	Species	DBH (in)	Drip Rad.	CRZ (ft)	Vigor	Structure	Risk	Pres Value	Recommendations
318	Red maple <i>Acer rubrum</i>	10.3	14.0	10.3	Fair	Fair to Good	Low	Low	
Notes/ Defects	The crown is thinning and there is one encircling root.								



Tree Assessment Matrix

Tree	Species	DBH (in)	Drip Rad.	CRZ (ft)	Vigor	Structure	Risk	Pres Value	Recommendations
319	Norway maple <i>Acer platanoides</i>	9.8	14.0	9.8	Good	Good	Low	Low	
Notes/ Defects	This tree is in good condition at the corner of the property.								



Tree Assessment Matrix

Tree	Species	DBH (in)	Drip Rad.	CRZ (ft)	Vigor	Structure	Risk	Pres Value	Recommendations
320	Norway maple <i>Acer platanoides</i>	11.2	10.0	11.2	Good	Good	Low	Medium	
Notes/ Defects	This is a healthy tree in good condition.								



Tree Assessment Matrix

Tree	Species	DBH (in)	Drip Rad.	CRZ (ft)	Vigor	Structure	Risk	Pres Value	Recommendations
321	Norway maple <i>Acer platanoides</i>	12.4	10.0	12.4	Good	Good	Low	Medium	
Notes/ Defects	This is a healthy tree with a very dense crown.								



Tree Assessment Matrix

Tree	Species	DBH (in)	Drip Rad.	CRZ (ft)	Vigor	Structure	Risk	Pres Value	Recommendations
322	Norway maple <i>Acer platanoides</i>	10.3	10.0	10.3	Fair to Good	Fair to Good	Low	Medium	
Notes/ Defects	There is some minor dieback in the crown.								



Tree Assessment Matrix

Tree	Species	DBH (in)	Drip Rad.	CRZ (ft)	Vigor	Structure	Risk	Pres Value	Recommendations
323	Norway maple <i>Acer platanoides</i>	13.1	10.0	13.1	Good	Fair to Good	Low	Medium	
Notes/ Defects	The tree has some dead twigs but the crown is dense and the foliage is healthy.								



Tree Assessment Matrix

Tree	Species	DBH (in)	Drip Rad.	CRZ (ft)	Vigor	Structure	Risk	Pres Value	Recommendations
324	Norway maple <i>Acer platanoides</i>	12.6	10.0	12.6	Good	Fair to Good	Low	Medium	
Notes/ Defects	The crown is dense and the foliage is healthy.								



Tree Assessment Matrix

Tree	Species	DBH (in)	Drip Rad.	CRZ (ft)	Vigor	Structure	Risk	Pres Value	Recommendations
325	Norway maple <i>Acer platanoides</i>	9.2	10.0	9.2	Good	Fair to Good	Low	Medium	
Notes/ Defects	There is some dieback in the crown but the foliage is healthy.								



Tree Assessment Matrix

Tree	Species	DBH (in)	Drip Rad.	CRZ (ft)	Vigor	Structure	Risk	Pres Value	Recommendations
326	Norway maple <i>Acer platanoides</i>	10.9	10.0	10.9	Good	Fair to Good	Low	Medium	
Notes/ Defects	There is some dieback in the crown but the foliage is lush and healthy.								



Tree Assessment Matrix

Tree	Species	DBH (in)	Drip Rad.	CRZ (ft)	Vigor	Structure	Risk	Pres Value	Recommendations
327	Norway maple <i>Acer platanoides</i>	10.9	10.0	10.9	Good	Fair to Good	Low	Medium	
Notes/ Defects	The lower crown has some dieback and the upper crown is dense.								



Tree Assessment Matrix

Tree	Species	DBH (in)	Drip Rad.	CRZ (ft)	Vigor	Structure	Risk	Pres Value	Recommendations
328	Norway maple <i>Acer platanoides</i>	12.2	10.0	12.2	Good	Fair to Good	Low	Medium	
Notes/ Defects	The upper crown is dense.								



Tree Assessment Matrix

Tree	Species	DBH (in)	Drip Rad.	CRZ (ft)	Vigor	Structure	Risk	Pres Value	Recommendations
329	Norway maple <i>Acer platanoides</i>	13.8	10.0	13.8	Good	Fair to Good	Low	Medium	
Notes/ Defects	There is some dieback in the crown but the foliage is healthy.								



Tree Assessment Matrix

Tree	Species	DBH (in)	Drip Rad.	CRZ (ft)	Vigor	Structure	Risk	Pres Value	Recommendations
330	Norway maple <i>Acer platanoides</i>	11.8	10.0	11.8	Good	Fair to Good	Low	Medium	
Notes/ Defects	There is some dieback in the crown but the foliage is healthy.								



Tree Assessment Matrix

Tree	Species	DBH (in)	Drip Rad.	CRZ (ft)	Vigor	Structure	Risk	Pres Value	Recommendations
331	Norway maple <i>Acer platanoides</i>	7.8	10.0	7.8	Fair	Fair to Good	Low	Medium	
Notes/ Defects	The crown has some dieback.								



Tree Assessment Matrix

Tree	Species	DBH (in)	Drip Rad.	CRZ (ft)	Vigor	Structure	Risk	Pres Value	Recommendations
332	Norway maple <i>Acer platanoides</i>	9.1	10.0	9.1	Good	Fair to Good	Low	Medium	
Notes/ Defects	The crown is very dense.								



Tree Assessment Matrix

Tree	Species	DBH (in)	Drip Rad.	CRZ (ft)	Vigor	Structure	Risk	Pres Value	Recommendations
333	Norway maple <i>Acer platanoides</i>	8.7	10.0	8.7	Fair	Fair to Good	Low	Medium	
Notes/ Defects	There is some dieback in the crown but the foliage is healthy.								



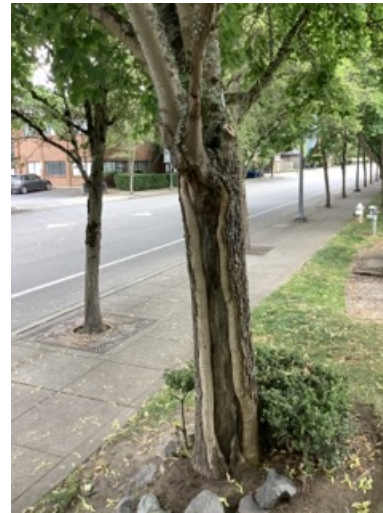
Tree Assessment Matrix

Tree	Species	DBH (in)	Drip Rad.	CRZ (ft)	Vigor	Structure	Risk	Pres Value	Recommendations
334	Norway maple <i>Acer platanoides</i>	12.1	10.0	12.1	Fair	Fair to Good	Low	Medium	
Notes/ Defects	There is some dieback in the crown but the foliage is healthy.								



Tree Assessment Matrix

Tree	Species	DBH (in)	Drip Rad.	CRZ (ft)	Vigor	Structure	Risk	Pres Value	Recommendations
335	Norway maple <i>Acer platanoides</i>	13.3	10.0	13.3	Fair to Good	Fair to Good	Low	Medium	
Notes/ Defects	The crown is dense and healthy. A large wound on the lower trunk is compartmentalized.								



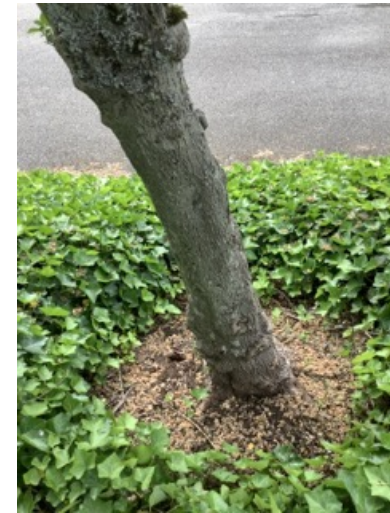
Tree Assessment Matrix

Tree	Species	DBH (in)	Drip Rad.	CRZ (ft)	Vigor	Structure	Risk	Pres Value	Recommendations
336	Japanese snowbell <i>Styrax japonicus</i>		4.0	4.2	Poor	Poor to Fair	Low	Low	
Notes/ Defects	One of the codominant stems is mostly dead.								



Tree Assessment Matrix

Tree	Species	DBH (in)	Drip Rad.	CRZ (ft)	Vigor	Structure	Risk	Pres Value	Recommendations
337	Japanese snowbell <i>Styrax japonicus</i>	5.8	6.0	5.8	Fair to Good	Fair to Good	Low	Low	
Notes/ Defects	There is some minor dieback in the crown. The tree has a good shape.								



Tree Assessment Matrix

Tree	Species	DBH (in)	Drip Rad.	CRZ (ft)	Vigor	Structure	Risk	Pres Value	Recommendations
338	Japanese snowbell <i>Styrax japonicus</i>	4.0	6.0	4.0	Fair to Good	Fair to Good	Low	Low	
Notes/ Defects	This is a short tree growing under a larger cherry.								



Tree Assessment Matrix

Tree	Species	DBH (in)	Drip Rad.	CRZ (ft)	Vigor	Structure	Risk	Pres Value	Recommendations
339	Bitter cherry <i>Prunus emarginata</i>	11.8	15.0	11.8	Good	Fair	Low	Low	
Notes/ Defects	The tree has a slight lean towards the parking area.								



Tree Assessment Matrix

Tree	Species	DBH (in)	Drip Rad.	CRZ (ft)	Vigor	Structure	Risk	Pres Value	Recommendations
340	Honey locust <i>Gleditsia triacanthos</i>	25.3	14.0	25.3	Fair to Good	Good	Low	Medium	
Notes/ Defects	The trunk is mostly growing straight. The lowest branches start at approximately 20 feet high.								



Tree Assessment Matrix

Tree	Species	DBH (in)	Drip Rad.	CRZ (ft)	Vigor	Structure	Risk	Pres Value	Recommendations
341	Bitter cherry <i>Prunus emarginata</i>	28.6	20.0	28.6	Fair	Fair	Low	Medium	
Notes/ Defects	There are three main codominant stems. One stem has a cavity and it could fail, but there is no target within striking distance.								



Tree Assessment Matrix

Tree	Species	DBH (in)	Drip Rad.	CRZ (ft)	Vigor	Structure	Risk	Pres Value	Recommendations
342	Norway maple <i>Acer platanoides</i>	14.2	15.8	14.2	Fair	Fair	Low	Low	
Notes/ Defects	The asymmetrical crown is growing towards the street.								



Tree Assessment Matrix

Tree	Species	DBH (in)	Drip Rad.	CRZ (ft)	Vigor	Structure	Risk	Pres Value	Recommendations
343	Douglas fir <i>Pseudotsuga menziesii</i>	14.2	11.5	14.2	Fair to Good	Fair to Good	Low	Low	
Notes/ Defects	The asymmetrical crown is growing towards the parking area.								



Tree Assessment Matrix

Tree	Species	DBH (in)	Drip Rad.	CRZ (ft)	Vigor	Structure	Risk	Pres Value	Recommendations
344	Norway maple <i>Acer platanoides</i>	10.3	10.0	10.3	Fair to Good	Fair	Low	Low	
Notes/ Defects	The crown has dense healthy foliage.								



Tree Assessment Matrix

Tree	Species	DBH (in)	Drip Rad.	CRZ (ft)	Vigor	Structure	Risk	Pres Value	Recommendations
345	Douglas fir <i>Pseudotsuga menziesii</i>	20.5	14.0	20.5	Good	Good	Low	Medium	
Notes/ Defects	This is the largest tree in the group.								



Tree Assessment Matrix

Tree	Species	DBH (in)	Drip Rad.	CRZ (ft)	Vigor	Structure	Risk	Pres Value	Recommendations
346	Norway maple <i>Acer platanoides</i>	11.0	14.0	11.0	Good	Poor to Fair	Low	Low	
Notes/ Defects	There is a large wound and dead wood in the trunk. The crown is asymmetrical towards the south.								



Tree Assessment Matrix

Tree	Species	DBH (in)	Drip Rad.	CRZ (ft)	Vigor	Structure	Risk	Pres Value	Recommendations
347	Norway maple <i>Acer platanoides</i>	12.0	12.0	12.0	Good	Good	Low	Low	
Notes/ Defects	There is some dieback in the crown but the foliage is healthy.								



Tree Assessment Matrix

Tree	Species	DBH (in)	Drip Rad.	CRZ (ft)	Vigor	Structure	Risk	Pres Value	Recommendations
348	Japanese snowbell <i>Styrax japonicus</i>	4.3	8.0	4.3	Poor to Fair	Fair	Low	Low	
Notes/ Defects	There is dead wood in the main stem. The tree is in decline.								



Tree Assessment Matrix

Tree	Species	DBH (in)	Drip Rad.	CRZ (ft)	Vigor	Structure	Risk	Pres Value	Recommendations
349	Japanese snowbell <i>Styrax japonicus</i>		4.0	6.5	Fair to Good	Fair to Good	Low	Low	
Notes/ Defects	The crown is thinning but the tree is still viable.								



Tree Assessment Matrix

Tree	Species	DBH (in)	Drip Rad.	CRZ (ft)	Vigor	Structure	Risk	Pres Value	Recommendations
350	Norway maple <i>Acer platanoides</i>	10.9	10.0	10.9	Good	Good	Low	Low	
Notes/ Defects	The tree has a dense crown.								



Tree Assessment Matrix

Tree	Species	DBH (in)	Drip Rad.	CRZ (ft)	Vigor	Structure	Risk	Pres Value	Recommendations
351	Norway maple <i>Acer platanoides</i>	9.1	10.0	9.1	Good	Good	Low	Low	
Notes/ Defects	The tree has a dense crown.								



Tree Assessment Matrix

Tree	Species	DBH (in)	Drip Rad.	CRZ (ft)	Vigor	Structure	Risk	Pres Value	Recommendations
352	Norway maple <i>Acer platanoides</i>	13.2	10.0	13.2	Good	Good	Low	Medium	
Notes/ Defects	This is a healthy tree with a nice form.								



Tree Assessment Matrix

Tree	Species	DBH (in)	Drip Rad.	CRZ (ft)	Vigor	Structure	Risk	Pres Value	Recommendations
353	Norway maple <i>Acer platanoides</i>	12.6	10.0	12.6	Fair to Good	Good	Low	Medium	
Notes/ Defects	There is some minor dieback in the crown.								



Tree Assessment Matrix

Tree	Species	DBH (in)	Drip Rad.	CRZ (ft)	Vigor	Structure	Risk	Pres Value	Recommendations
354	Norway maple <i>Acer platanoides</i>	15.5	10.0	15.5	Good	Good	Low	Medium	
Notes/ Defects	The tree has a large, healthy crown.								



Tree Assessment Matrix

Tree	Species	DBH (in)	Drip Rad.	CRZ (ft)	Vigor	Structure	Risk	Pres Value	Recommendations
355	Norway maple <i>Acer platanoides</i>	10.2	10.0	10.2	Good	Good	Low	Medium	
Notes/ Defects	The crown is dense and healthy.								



Tree Assessment Matrix

Tree	Species	DBH (in)	Drip Rad.	CRZ (ft)	Vigor	Structure	Risk	Pres Value	Recommendations
356	Norway maple <i>Acer platanoides</i>	13.1	10.0	13.1	Fair to Good	Good	Low	Low	
Notes/ Defects	There is some dieback in the crown.								



Tree Assessment Matrix

Tree	Species	DBH (in)	Drip Rad.	CRZ (ft)	Vigor	Structure	Risk	Pres Value	Recommendations
357	Norway maple <i>Acer platanoides</i>	13.1	10.0	13.1	Fair to Good	Good	Low	Low	
Notes/ Defects	There is some dieback in the crown.								



Tree Assessment Matrix

Tree	Species	DBH (in)	Drip Rad.	CRZ (ft)	Vigor	Structure	Risk	Pres Value	Recommendations
358	Norway maple <i>Acer platanoides</i>	11.6	10.0	11.6	Fair to Good	Good	Low	Low	
Notes/ Defects	There is some dieback in the crown.								



Tree Assessment Matrix

Tree	Species	DBH (in)	Drip Rad.	CRZ (ft)	Vigor	Structure	Risk	Pres Value	Recommendations
359	Norway maple <i>Acer platanoides</i>	12.0	10.0	12.0	Fair to Good	Good	Low	Low	
Notes/ Defects	There is some dieback in the crown.								



Tree Assessment Matrix

Tree	Species	DBH (in)	Drip Rad.	CRZ (ft)	Vigor	Structure	Risk	Pres Value	Recommendations
360	Norway maple <i>Acer platanoides</i>	12.2	10.0	12.2	Fair	Good	Low	Low	
Notes/ Defects	The crown has lots of dieback and the foliage is thinning overall.								



Critical Root Zone

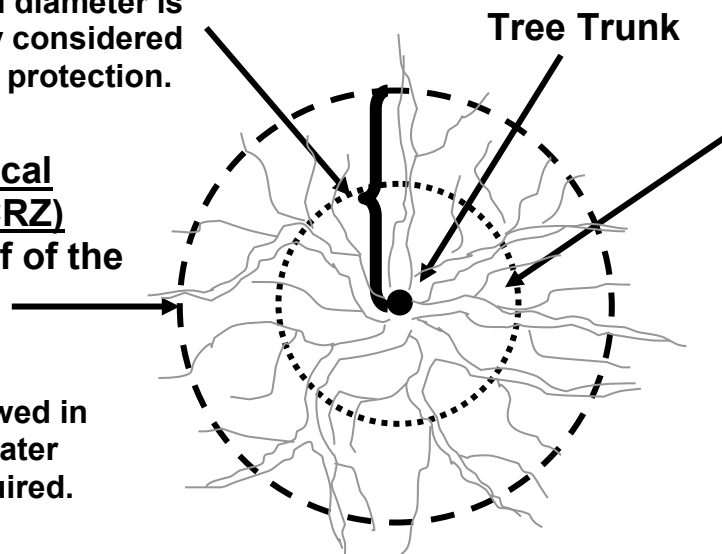
(CRZ) =

12" Radius for every Tree inch diameter is generally considered optimum protection.

Perimeter Critical Root Zone (PCRZ)

= the outer half of the CRZ

The greater the disturbance allowed in this area, the greater Post Care is required.



Interior Critical Root Zone (ICRZ)

= the inner half of the CRZ

Protecting only this area would cause significant impact to the tree, potentially life threatening, and would require maximum Post Care Treatment to retain the tree. See Post Care Treatment below.

The Critical Root Zone (CRZ) of a tree is established on the basis of the trunk diameter. The CRZ is a circular area which has a radius of 12 inches for every inch diameter of trunk measured at 4.5 feet above grade. Root systems will vary both in depth and spread depending on size of tree, soils, water table, species and other factors. However, this CRZ description is generally accepted in the tree industry. Protecting this entire root zone area should result in no adverse impact to the tree, except for potentially increased exposure.

The above CRZ drawing has been further differentiated into the Perimeter (PCRZ) and Interior (ICRZ) to help define potential impact and required post care.

Generally, limiting disturbance to outside of the full CRZ is considered the optimum amount of root protection for a tree. Encroaching into the Perimeter CRZ requires greater post care for the tree to remain healthy and stable.

The Interior CRZ (ICRZ) is half the radius of the Perimeter CRZ (PCRZ) and approximately equal to the size of a root ball needed to transplant the tree. Disturbance within any part of the Interior CRZ could destabilize or cause the tree to decline and should be avoided if the tree is to be retained. Due to the immense variability between individual trees and root systems, partial encroachment into the Interior CRZ can be considered on a case by case basis under direction by a certified arborist or similarly qualified tree professional.

This post care treatment would include but may not be limited to; regular irrigation, misting, root treatment with special root hormones or growth stimulants, mulching, guying and monitoring for several years. Lack of this treatment could be fatal.



Urban Forestry Services

BARTLETT CONSULTING

Divisions of The F.A. Bartlett Tree Expert Company

15119 McLean Road
Mount Vernon, Washington 98273
360-428-5810

Title: Critical Root Zone (CRZ) Explanation

Source: Urban Forestry Services, Inc

Jim Barborinas, ISA Certified Arborist PN-0135

ASCA Registered Consulting Arborist #356,

Tree Risk Assessor Qualified

Date: 2020

Not to Scale