



# Special Catch Basin MH 40-2 Rehabilitation Project Vicinity Map



### Legend

- Major Roads
- Street Centerline
- March 2020
- Red: Band\_1
- Green: Band\_2
- Blue: Band\_3

**Project Site**  
4266 E Mercer Way

1: 5,000



Disclaimer: These maps were developed by the City of Mercer Island and are intended to be a general purpose digital reference tool. These maps are not an accepted legal instrument for describing, establishing, recording or maintaining descriptions for property concerns or boundaries. The City makes no representation or warranty with respect to the accuracy or currency of these data sets, especially in regard to labeling of surveyed dimensions, or agreement with official sources such as records of survey, or mapped locations of features.

### Notes

Project Location - City

## ITB Attachments A-1

# Special Catch Basin MH 40-2 - 4266 E. Mercer Way



### Legend

- Sewer Pump Station
  - Sewer Outfall
  - Clean Out
  - Sewer Manhole**
    - Other
    - Hydraulic Grade Manhole
    - Manhole
    - Overflow Manhole
    - Special Sewer Catch Basin
    - Grease Trap
  - Sewer Main
  - Pressurized Main
  - Sewer Stub
  - Sewer Service Line**
    - Mercer Island
    - Other
  - Sewer Lining
  - Sewer Video**
  - Easements**
    - WATER EASEMENT
    - SEWER EASEMENT
    - STORM EASEMENT
    - ACCESS EASEMENT
    - GENERAL UTILITY EASEMENT
    - MULTIPLE USE EASEMENT
    - VEGETATION EASEMENT
    - OTHER EASEMENT
  - Address**
    - Parcels
    - Docks
    - Shoreline
- March 2020



1 inch =  
33.333333333333  
feet



Disclaimer: These maps were developed by the City of Mercer Island and are intended to be a general purpose digital reference tool. These maps are not an accepted legal instrument for describing, establishing, recording or maintaining descriptions for property concerns or boundaries. The City makes no representation or warranty with respect to the accuracy or currency of these data sets, especially in regard to labeling of surveyed dimensions, or agreement with official sources such as records of survey, or mapped locations of features.

### Notes

**ITB Attachments  
A-2**

**Manhole 40-2 Photos**



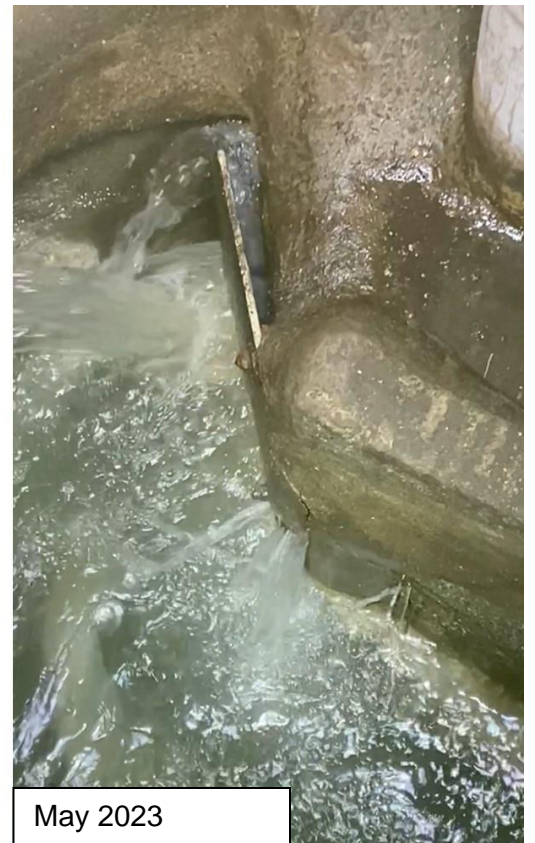
September 2016



January 2017 Repair



May 2023



May 2023

Manhole 40-2 Photos Continued



May 2023

Manhole 40-2 Photos Continued



May 2023

# Field Inspection Report

Source: Applegate, Daniel. (2018) P.E., *Mercer Island Special Sewer Catch Basin Evaluation Phase 2: Catch Basin Inspection Report*. HDR Engineering

Disclaimer: This report is 5 years old and is intended to provide manhole dimensions and orientation of inverts only.

## MERCER ISLAND SPECIAL SEWER CATCH BASIN FIELD INVESTIGATION FORM

CATCH BASIN NAME: 40-2 DATE: 8/18  
 DRAINAGE BASIN (PS): PS 25

PHOTOS TAKEN:

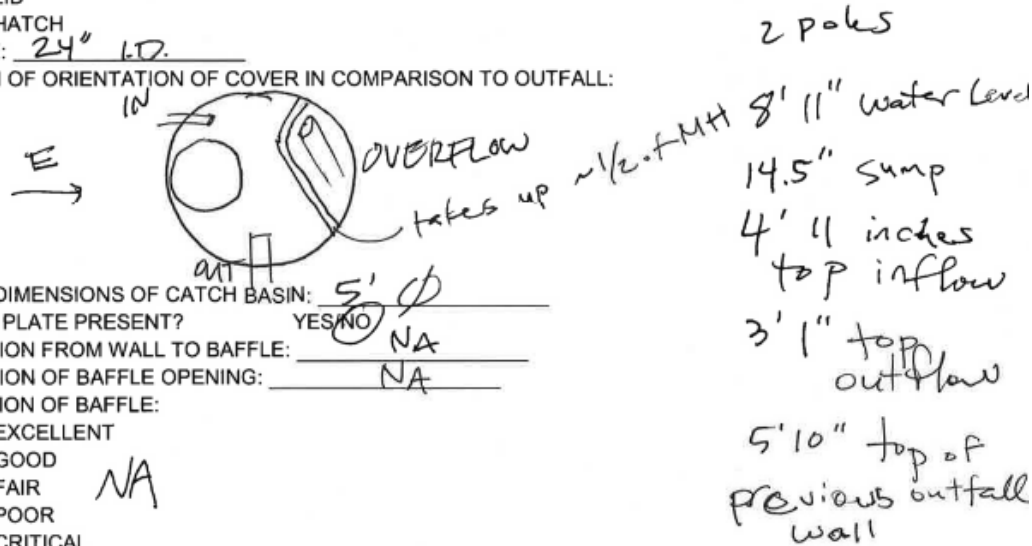
- R.O.W. ACCESS
- TOP OF C.B.
- INFLOW DETAIL
- ACCESSIBLE ROUTE N/A (IN ROAD)
- INSIDE OF C.B.
- OUTFLOW/BAFFLE DETAIL

TYPE OF COVER:

- LID
- HATCH

SIZE: 24" LD.

SKETCH OF ORIENTATION OF COVER IN COMPARISON TO OUTFALL:



INSIDE DIMENSIONS OF CATCH BASIN: 5' 0"

BAFFLE PLATE PRESENT? YES/NO NA

DIMENSION FROM WALL TO BAFFLE: NA

DIMENSION OF BAFFLE OPENING: NA

CONDITION OF BAFFLE:

- EXCELLENT
- GOOD
- FAIR NA
- POOR
- CRITICAL

DEPTH FROM TOP OF C.B. TO OUTFLOW INVERT: \_\_\_\_\_

DEPTH OF SUMP BELOW OUTFALL INVERT: \_\_\_\_\_

WATER LEVEL IN STRUCTURE: \_\_\_\_\_

COMMENTS/OBSERVATIONS:

previous outflow line, there is a bend on new outflow not a lot of room to ~~relocate~~ shoreline. High velocity flows coming in

CITY COMMENTS/OBSERVATIONS: \_\_\_\_\_

TO BE PROVIDED BY CITY IF AVAILABLE:

UPSTREAM PIPE SIZE: \_\_\_\_\_ MATERIAL: \_\_\_\_\_ SLOPE: \_\_\_\_\_

DOWNSTREAM PIPE SIZE: \_\_\_\_\_ MATERIAL: \_\_\_\_\_

AVERAGE DRY WEATHER FLOWS: \_\_\_\_\_

PEAK STORM FLOWS: \_\_\_\_\_

Notes:

- 1 Length of Catch Basin risers approximated from visual inspection at top of Catch Basin.
- 2 Up to three poles connected together were used to make measurements in the field. One pole measured at a length of 6'-0", two poles measured at a length of 11'-4", and three poles measured at a length of 16'-8".
- 3 Diameters shown based on GIS data obtained from City of Mercer Island Information & Geographic Services. Pipe thickness to be 2-inches for all diameter pipes.
- 4 Water surface measured from laser tape measure attached to level across Catch Basin rim opening.
- 5 Baffle measurements approximated from visual inspection at top of Catch Basin.