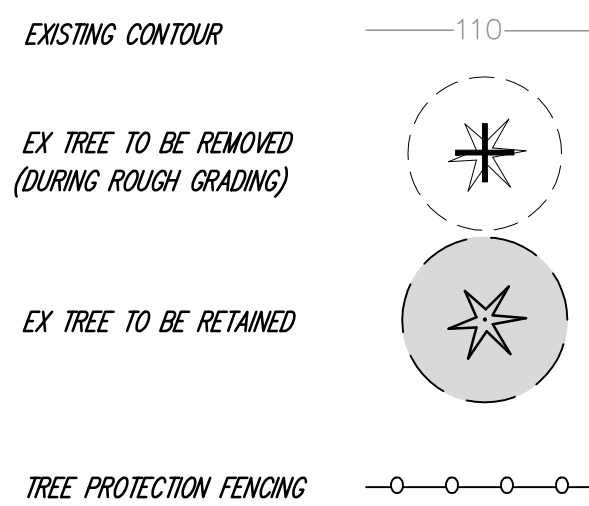


ARBORIST'S ON-SITE TREE RETENTION TABLE

Tree ID	Scientific Name	Common Name	DSH (inches)	Multistem Diameter	Health Condition	Structural Condition	Dripline Radius (feet)	Retain / Remove	Notes
1	<i>Malus domestica</i>	Apple	13		Good	Fair	13	Remove	A lot of pruning wounds, reduction and heading cuts
2	<i>Photinia x fraseri</i>	Fraser photinia	17.5	17.5	Poor	Fair	12	Retain	Canopy decline, leaf spots, contorted leaves, powdery mildew
3	<i>Fraxinus latifolia</i>	Oregon ash	10.8	10.8	Fair	Fair	15	Remove	Ivy on stem, symptoms of anthracnose in canopy
4	<i>Fraxinus latifolia</i>	Oregon ash	8		Fair	Fair	12	Remove	Diameter estimated, heavy lean, similar to tree 3
5	<i>Fraxinus latifolia</i>	Oregon ash	8.7		Fair	Poor	15	Remove	Partially failed, heavy ivy, heavy lean
6	<i>Thuja plicata</i>	Western redcedar	14		Good	Fair	10	Remove	Ivy at base, phototropic, swept base
7	<i>Crataegus monogyna</i>	Common hawthorn	9.8		Fair	Fair	15	Remove	Measured at narrowest point below codominant union, eastward lean, heavy ivy
8	<i>Crataegus monogyna</i>	Common hawthorn	7		Fair	Fair	10	Retain	Heavy ivy, phototropic lean
9	<i>Thuja plicata</i>	Western redcedar	5.7		Good	Good	9	Retain	Suppressed, canopy asymmetrical, ivy
10	<i>Thuja plicata</i>	Western redcedar	13.8		Good	Fair	10	Retain	Mature ivy up trunk
11	<i>Salix sp.</i>	Willow	7.4, 6.7, 6.7	12	Good	Fair	20	Retain	3 codominant stems, wound at base. English laurel at base girdling stem
12	<i>Cupressus glabra</i>	Arizona cypress	10.6		Good	Fair	9	Retain	Codominant leaders, some dieback
13	<i>Pinus ponderosa</i>	Ponderosa pine	35.8		Good	Good	25	Retain	Blackberry at base
14	<i>Prunus domestica</i>	Common plum	11.5		Good	Good	14	Retain	Ivy on stem, leaning
15	<i>Ligustrum sp.</i>	Privet	5.1, 2.5, 2.5, 3, 3.5	7.7	Good	Good	15	Retain	
16	<i>Acer macrophyllum</i>	Bigleaf maple	3.5, 3, 3, 2, 2, 3, 4, 7	10.6	Good	Good	18	Retain	Stump sprout
17	<i>Crataegus monogyna</i>	Common hawthorn	13.3		Good	Good	15	Retain	
18	<i>Juniperus scopulorum</i>	Rocky Mountain juniper	3, 3, 1, 4	5.9	Good	Fair	6	Retain	
19	<i>Sorbus aucuparia</i>	European mountain ash	8.3, 9, 7.8, 7, 7	17.5	Poor	Poor	14	Remove	Extensive decay at base, tearouts, thin crown
20	<i>Pseudotsuga menziesii</i>	Douglas-fir	31		Good	Good	24	Retain	Heavy ivy on trunk - remove,
21	<i>Pseudotsuga menziesii</i>	Douglas-fir	3.7		Good	Good	9	Retain	One sided to south
22	<i>Sorbus aucuparia</i>	European mountain ash	26.4		Fair	Poor	16	Remove	Several stems, extensive decay at base, measured at narrowest point below codominant stems, poor attachments
23	<i>Thuja plicata</i>	Western redcedar	23.4		Good	Good	19	Retain	Shared canopy with 24
24	<i>Thuja plicata</i>	Western redcedar	25.5		Good	Good	19	Retain	Directly adjacent to 23
25	<i>Thuja plicata</i>	Western redcedar	21.5		Good	Good	16	Retain	2 ft from 24
26	<i>Thuja plicata</i>	Western redcedar	29.4		Good	Good	24	Retain	Ivy up trunk
27	<i>Pseudotsuga menziesii</i>	Douglas-fir	18.4		Good	Good	23	Retain	Small hangers in tree
28	<i>Pseudotsuga menziesii</i>	Douglas-fir	24.5		Good	Good	23	Retain	Surface roots
29	<i>Pinus ponderosa</i>	Ponderosa pine	28.5		Good	Good	15	Remove	
30	<i>Prunus cerasifera</i>	Cherry plum	3.5, 3.5, 2, 2, 2, 4.4, 4.7, 4, 2, 2, 3.6, 6.3, 2, 5.4, 6.2	15	Good	Fair	15	Retain	Stump sprout

LEGEND



TREE REPLACEMENT RATIO

Diameter of removed tree	Number of Replacement Trees Required
Less than 10 inches	1
10 inches up to 24 inches	2
24 inches up to 36 inches	3
More than 36 inches and any exceptional tree (s)	6

SUMMARY OF ON-SITE TREE RETENTION

EX SIGNIFICANT TREES: 30 (100%)

SIGNIFICANT TREES TO BE RETAINED: 9 (31%)

SIGNIFICANT TREES IN POOR CONDITION AND ADVISED TO BE REMOVED: 4 (13%)

SIGNIFICANT TREES TO BE REMOVED: 17 (56%)

* TOTAL OF 33 REPLACEMENT TREES REQUIRED. 25 REPLACEMENT TREES TO BE PLANTED. 8 TREES TO BE FEE-IN-LIEU.

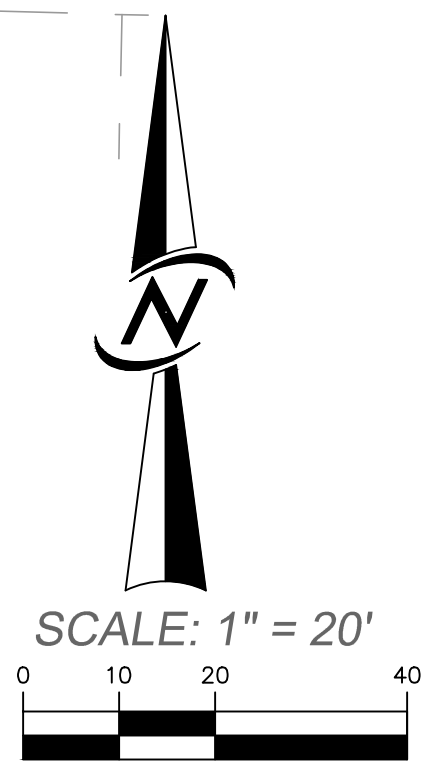
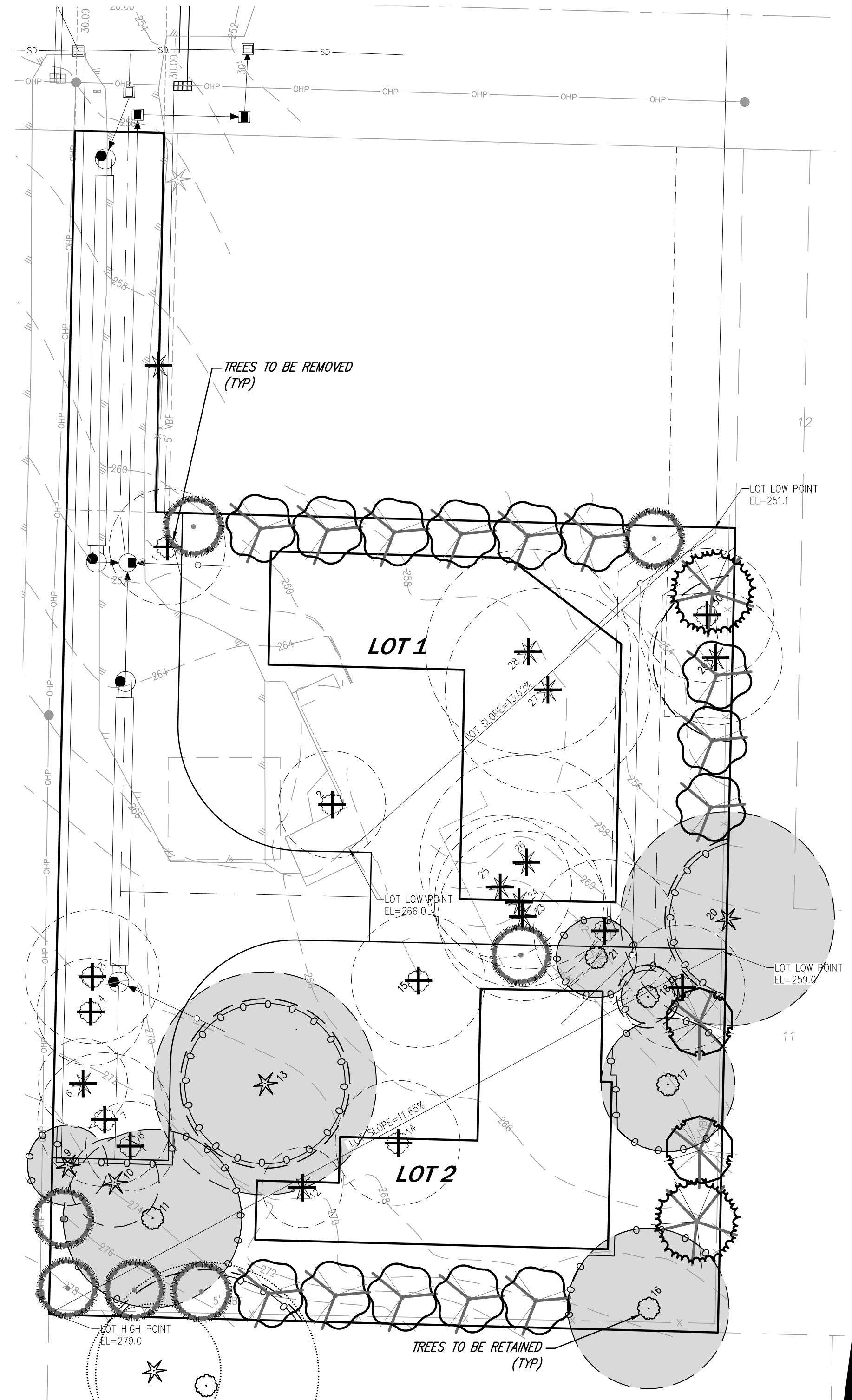
TREE REPLACEMENT LEGEND

TREES	QTY	BOTANICAL NAME	COMMON NAME	SIZE	SPACING	COMMENTS
[Symbol]	14	BETULA PAPPYRIFERA 'FARGO'	DAKOTA PINNACLE BIRCH	1.5" CAL. MIN.	AS SHOWN	INSECT RESIST TO JAPANESE BEETLE
[Symbol]	2	CRATAEGUS LAEVIGATA 'CRIMSON CLOUD'	CRIMSON CLOUD HAWTHORN	1.5" CAL. MIN.	AS SHOWN	DIS. RESIST. LEAF SPOT
[Symbol]	2	PSEUDOTSUGA MENZIESII	DOUGLAS FIR	6" HT. MIN.	AS SHOWN	FULL/WELL BRANCHED
[Symbol]	7	THUJA PLICATA	WESTERN RED CEDAR	6" HT. MIN.	AS SHOWN	FULL/WELL BRANCHED

* TOTAL OF 33 REPLACEMENT TREES REQUIRED. 25 REPLACEMENT TREES TO BE PLANTED. 8 TREES TO BE FEE-IN-LIEU.

NOTES

- FOR TREE RETENTION CALCULATION AND DATA SHEET, REFER TO "ARBORIST REPORT"
- THIS TREE RETENTION AND REPLACEMENT PLAN IS PRELIMINARY IN NATURE AND MAY CHANGE BASED ON ENGINEERING REVIEW COMMENTS ADDRESSED DURING THE PLAT IMPROVEMENT PROCESS FOR THE PROJECT



DATE: MAY 2016

DESIGNED: MARGIE I. KORIE P.L.A.

DRAWN: MARGIE I. KORIE P.L.A.

APPROVED: JOSHUA P. BEARD P.L.A.

PROJECT MANAGER: MARK PENDERGRAFT, P.L.S.

STATE OF WASHINGTON REGISTERED LANDSCAPE ARCHITECT

JOSHUA PENNINGTON BEARD

CERTIFICATE NO. 938

14711 NE 29th Place Suite 101
Bellevue, Washington 98007
425.882.7877 Fax: 425.882.7963

CORE DESIGN
ENGINEERING • PLANNING • SURVEYING

PRELIMINARY

TREE RETENTION AND REPLANTING PLAN
27TH STREET SHORT PLAT

DAVID YEH
PO BOX 809
MEGER, ISLAND, WA, 98040

SHEET 1 OF 1

PROJECT NUMBER 16082

27TH STREET SHORT PLAT SUB##-###