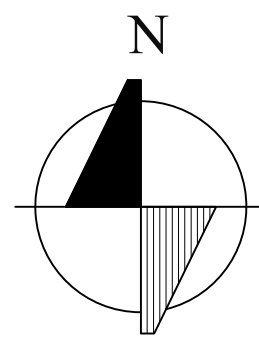


# REFERENCE PLAN FOR SHORT PLAT ALTERATION OF PARCEL A AND B, MERCER ISLAND SHORT PLAT NO. MI-84-01-02

A PORTION OF GOVERNMENT LOT 1, (NE 1/4, SE 1/4)  
SECTION 1, TOWNSHIP 24 N, RANGE 4 E, W.M.  
MERCER ISLAND, KING COUNTY, WASHINGTON



SCALE: 1" = 40'



CURVE TABLE			
CURVE	DELTA	RADIUS	LENGTH
C1	022°37'09"	260.00'	102.64'

LINE TABLE		
LINE	DIRECTION	LENGTH
L1	N90°00'00"E	7.00'
L2	S0°03'00"E	38.84'
L3	N90°00'00"E	27.00'

**EASEMENT LEGEND**

- (1, 2 & 3) EXTINGUISHED BY REC. NO. 20180119001411
- ① 10' WIDE PUBLIC SANITARY SEWER EASEMENT, AFN 4803213
  - ② 10' WIDE PUBLIC SANITARY SEWER EASEMENT, AFN 4691123
  - ③ 10' WIDE PUBLIC SANITARY SEWER EASEMENT, AFN 4655648
  - ④ 10' WIDE PUBLIC SANITARY SEWER EASEMENT, AFN'S 4655645 & 4655646

AREA OF TEMPORARY CONSTRUCTION EASEMENT FOR CONSTRUCTION OF PUMP STATION TERMINATED BY OPERATION, REC. NO. 4664738

**BASIS OF BEARING**

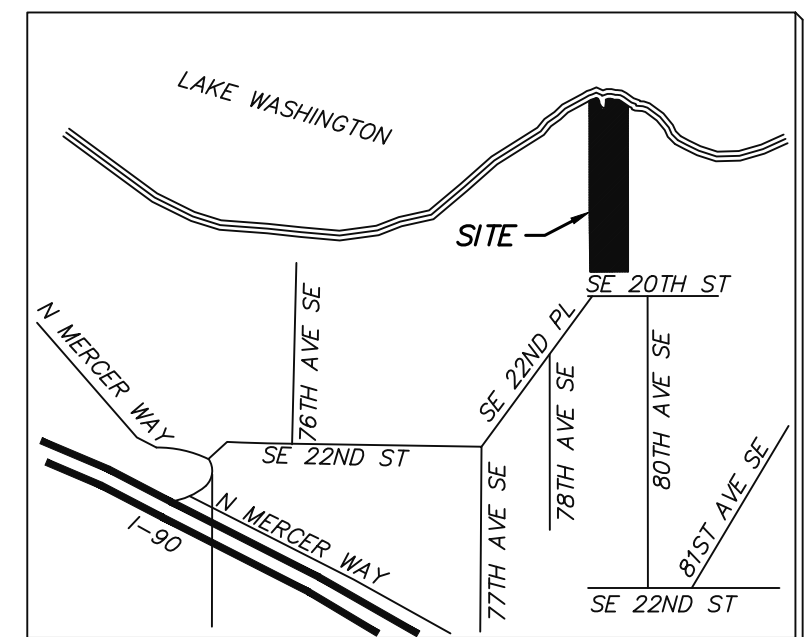
HELD THE BEARING OF NORTH 00° 03' 00" WEST ALONG THE CENTER LINE OF 80TH AVENUE S.E. BETWEEN S.E. 22ND STREET & S.E. 20TH STREET PER THE MERCER ISLAND SHORT PLAT "BARNES SHORT PLAT" BY M.W. MARSHALL, PROFESSIONAL LAND SURVEYOR, DATED DECEMBER 20, 1991 AND RECORDED JANUARY 1992, SHORT PLAT FILE NUMBER MI-91-1485 WITH RECORDING NUMBER 9202219005 RECORDS OF KING COUNTY, WASHINGTON.

**HORIZONTAL DATUM**

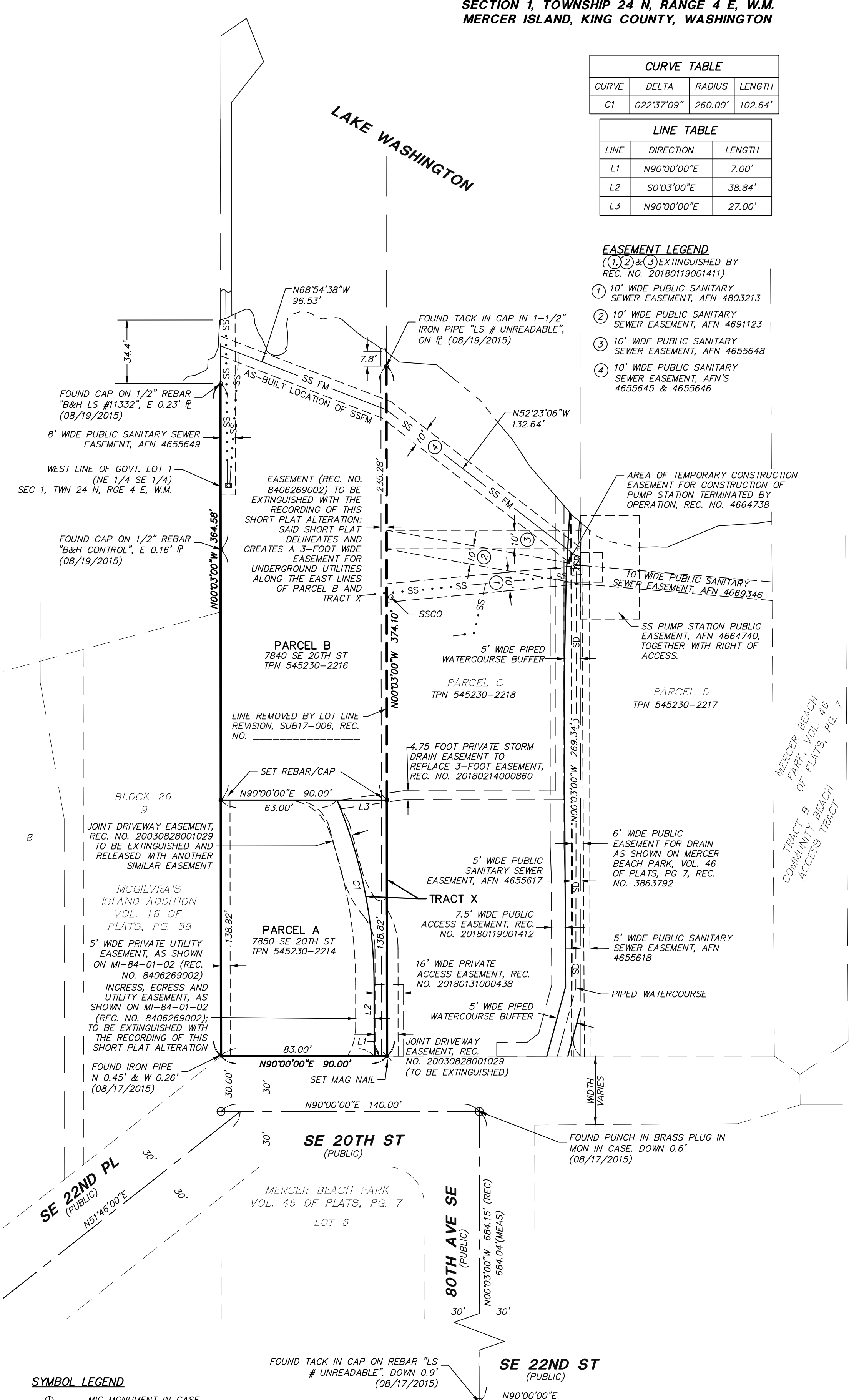
ASSUMED

**GENERAL NOTES**

1. PRIMARY CONTROL POINTS AND ACCESSIBLE MONUMENT POSITIONS WERE FIELD MEASURED UTILIZING GLOBAL POSITIONING SYSTEM (GPS) SURVEY TECHNIQUES USING TRIMBLE R10 GNSS EQUIPMENT. MONUMENT POSITIONS THAT WERE NOT DIRECTLY OBSERVED USING GPS SURVEY TECHNIQUES WERE TIED INTO THE CONTROL POINTS UTILIZING TRIMBLE VX SPATIAL STATION FOR THE MEASUREMENT OF BOTH ANGLES AND DISTANCES. THIS SURVEY MEETS OR EXCEEDS THE STANDARDS SET BY WAC 332-130-090
2. THE INFORMATION DEPICTED ON THIS MAP REPRESENTS THE RESULTS OF A SURVEY MADE ON AUGUST 15 THROUGH 24, 2015 AND CAN ONLY BE CONSIDERED AS INDICATING THE GENERAL CONDITION EXISTING AT THAT TIME.
3. THE CITY OF MERCER ISLAND UTILITY RECORDS INDICATE THAT A SANITARY SEWER LINE RUNS ALONG THE SHORELINE OF LAKE WASHINGTON. THE LINE WAS POTHOLED IN AUGUST 2017 NORTHWESTERLY FROM THE SEWER PUMP STATION AND IS LOCATED AS SHOWN HEREON.
4. EASEMENTS AND LEGAL DESCRIPTIONS ARE BASED ON CHICAGO TITLE INSURANCE COMPANY, GUARANTEE NO. 48592AB-ETU-FOURTH, DATED FEBRUARY 16, 2018 AT 12:00 AM.
5. THE LIMITS AND LATERAL LINES OF THE SECOND CLASS SHORELANDS ADJOINING PARCEL B HAS NOT BEEN DETERMINED.
6. ORDINARY HIGH WATER (OHW) IS SHOWN AT AN ELEVATION OF 18.6', VERTICAL DATUM OF NAVD 88, PER MERCER ISLAND MUNICIPAL CODE CHAPTER 19.16.010. THIS ELEVATION IS EQUAL TO 21.85' PER THE US ARMY CORPS OF ENGINEERS VERTICAL DATUM AT THE HIRAM CHITTENDEN LOCKS IN SEATTLE.
7. SUBJECT TO COVENANTS AND OTHER MATTERS DISCLOSED IN INSTRUMENT RECORDED UNDER RECORDING NUMBER 8406269002. REFER TO THAT INSTRUMENT FOR ITS FULL PARTICULARS.
8. SUBJECT TO A ROAD MAINTENANCE AGREEMENT RECORDED UNDER RECORDING NUMBER 20180131000438. REFER TO THAT INSTRUMENT FOR ITS FULL PARTICULARS.
9. SUBJECT TO A MEMORANDUM OF COTENANCY AGREEMENT RECORDED UNDER RECORDING NUMBER 20061114001877. REFER TO THAT INSTRUMENT FOR ITS FULL PARTICULARS.



VICINITY MAP  
NOT TO SCALE



**SYMBOL LEGEND**

- ⊕ MIC MONUMENT IN CASE
- PROPERTY CORNER (FOUND AS NOTED)
- ✕ PK NAIL (FOUND AS NOTED)
- ✕ SET PROPERTY CORNER, MAG NAIL WITH LS WASHER
- SET PROPERTY CORNER, REBAR WITH LS CAP
- SS FM SEWER FORCE MAIN - POTHOLED LOCATION
- SS SEWER LINE PER PAINT MARKS

20300 Woodinville  
Snohomish Rd N  
Suite A • Woodinville,  
WA. 9807  
p: 425.415.2000  
f: 425.486.505  
w: triadassociates.net

**MERCER ISLAND FILE NO. SUB17-007**

JOB NO 15-131      MARCH 28, 2018      SHEET 1 OF 1

VOL/P6