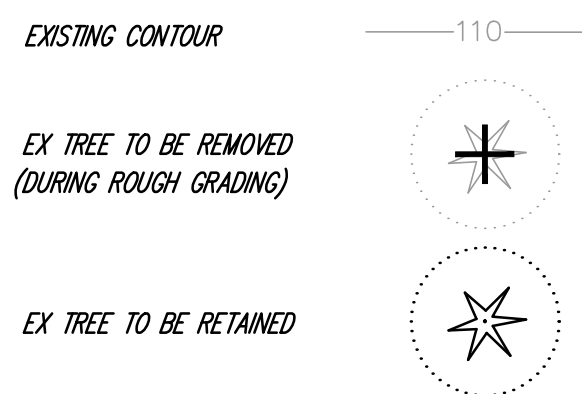


**ON-SITE TREE RETENTION TABLE**

Tree ID	Scientific Name	Common Name	DSH (inches)	Multistem Diameter	Health Condition	Structural Condition	Dripline Radius (feet)	Retain / Remove	Notes
1	Malus domestica	Apple	13		Good	Fair	13	Remove	A lot of pruning wounds, reduction and heading cuts
2	Photinia x fraseri	Fraser photinia	17.5	17.5	Poor	Fair	12	Retain	Canopy decline, leaf spots, contorted leaves, powdery mildew
3	Fraxinus latifolia	Oregon ash	10.8	10.8	Fair	Fair	15	Remove	Ivy on stem, symptoms of anthracnose in canopy
4	Fraxinus latifolia	Oregon ash	8		Fair	Fair	12	Remove	Diameter estimated, heavy lean, similar to tree 3
5	Fraxinus latifolia	Oregon ash	8.7		Fair	Poor	15	Remove	Partially failed, heavy ivy, heavy lean
6	Thuja plicata	Western redcedar	14		Good	Fair	10	Remove	Ivy at base, phototropic, swept base
7	Crataegus monogyna	Common hawthorn	9.8		Fair	Fair	15	Remove	Measured at narrowest point below codominant union, eastward lean, heavy ivy
8	Crataegus monogyna	Common hawthorn	7		Fair	Fair	10	Retain	Heavy ivy, phototropic lean
9	Thuja plicata	Western redcedar	5.7		Good	Good	9	Retain	Suppressed, canopy asymmetrical, ivy
10	Thuja plicata	Western redcedar	13.8		Good	Fair	10	Retain	Mature ivy up trunk
11	Salix sp.	Willow	7.4, 6.7, 6.7	12	Good	Fair	20	Retain	3 codominant stems, wound at base. English laurel at base girdling stem
12	Cupressus glabra	Arizona cypress	10.6		Good	Fair	9	Retain	Codominant leaders, some dieback
13	Pinus ponderosa	Ponderosa pine	35.8		Good	Good	25	Retain	Blackberry at base
14	Prunus domestica	Common plum	11.5		Good	Good	14	Retain	Ivy on stem, leaning
15	Ligustrum sp.	Privet	5.1, 2.5, 2.5, 3, 3.5	7.7	Good	Good	15	Retain	
16	Acer macrophyllum	Bigleaf maple	3.5, 3, 3, 2, 2, 3, 4, 7	10.6	Good	Good	18	Retain	Stump sprout
17	Crataegus monogyna	Common hawthorn	13.3		Good	Good	15	Retain	
18	Juniperus scopulorum	Rocky Mountain juniper	3, 3, 1, 4	5.9	Good	Fair	6	Retain	
19	Sorbus aucuparia	European mountain ash	8.3, 9, 7.8, 7, 7	17.5	Poor	Poor	14	Remove	Extensive decay at base, tearouts, thin crown
20	Pseudotsuga menziesii	Douglas-fir	31		Good	Good	24	Retain	Heavy ivy on trunk - remove,
21	Pseudotsuga menziesii	Douglas-fir	3.7		Good	Good	9	Retain	One sided to south
22	Sorbus aucuparia	European mountain ash	26.4		Fair	Poor	16	Remove	Several stems, extensive decay at base, measured at narrowest point below codominant stems, poor attachments
23	Thuja plicata	Western redcedar	23.4		Good	Good	19	Retain	Shared canopy with 24
24	Thuja plicata	Western redcedar	25.5		Good	Good	19	Retain	Directly adjacent to 23
25	Thuja plicata	Western redcedar	21.5		Good	Good	16	Retain	2 ft from 24
26	Thuja plicata	Western redcedar	29.4		Good	Good	24	Retain	Ivy up trunk
27	Pseudotsuga menziesii	Douglas-fir	18.4		Good	Good	23	Retain	Small hangers in tree
28	Pseudotsuga menziesii	Douglas-fir	24.5		Good	Good	23	Retain	Surface roots
29	Pinus ponderosa	Ponderosa pine	28.5		Good	Good	15	Remove	
30	Prunus cerasifera	Cherry plum	3.5, 3.5, 2, 2, 2, 4.4, 4.7, 4, 2, 2, 3.6, 6.3, 2, 5.4, 6.2	15	Good	Fair	15	Retain	Stump sprout

**LEGEND**



**NOTES**

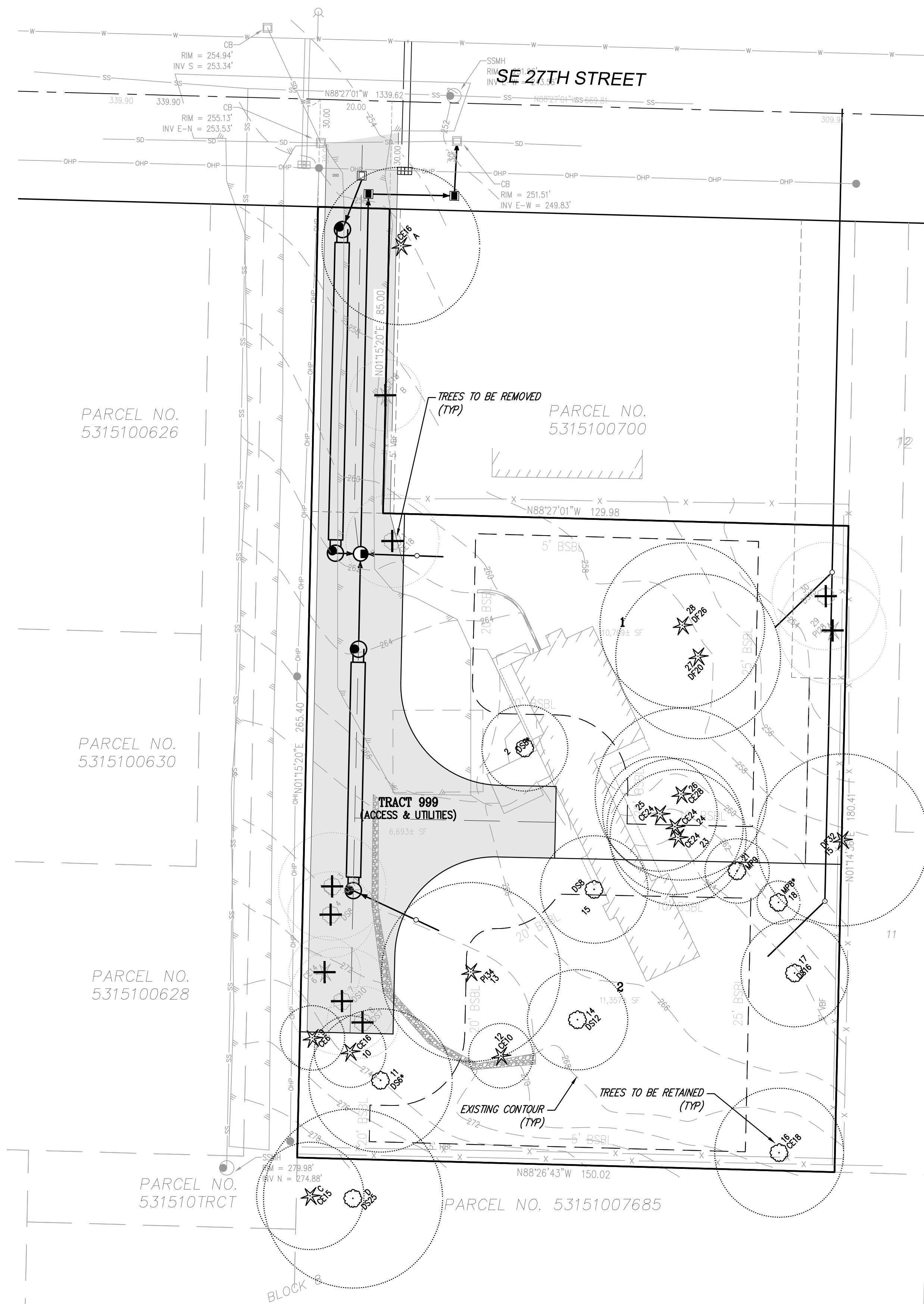
- FOR TREE RETENTION CALCULATION AND DATA SHEET, REFER TO "ARBORIST REPORT"
- THIS TREE PRESERVATION PLAN IS PRELIMINARY IN NATURE AND MAY CHANGE BASED ON ENGINEERING REVIEW COMMENTS ADDRESSED DURING THE PLAT IMPROVEMENT PROCESS FOR THE PROJECT

**SUMMARY OF ON-SITE TREE RETENTION**

EX SIGNIFICANT TREES: 30 (100%)

SIGNIFICANT TREES TO BE RETAINED: 22 (73%)

SIGNIFICANT TREES TO BE REMOVED: 8 (27%)



PRELIMINARY

TREE REMOVAL AND RETENTION PLAN  
27TH STREET SHORT PLAT

DAVID YEH  
PO BOX 809  
MERCER ISLAND, WA, 98040

14711 NE 29th Place Suite 101  
Bellevue, Washington 98007  
425.885.7877 Fax 425.885.7963



ENGINEERING • PLANNING • SURVEYING

DATE: MAY 2016  
DESIGNED: P. LONGONI, E.I.T.  
DRAWN: P. LONGONI, E.I.T.  
APPROVED: M. MOODY, P.E.  
MARK PENDERGRAFT, P.L.L.C.  
PROJECT MANAGER

SHEET OF  
**PS2.2** 7  
PROJECT NUMBER  
**16082**

27TH STREET SHORT PLAT SUB##-###